

## City Peninsula, Barge Walk, Greenwich, SE10 0FP

£1,675 PCM

*\*Pay less upfront with a Zero Deposit Guarantee\** A fantastic two bedroom apartment situated on the 17th Floor (top floor) boasting absolutely amazing views of the River Thames. Located in the vibrant North Greenwich in one of the most sought after buildings within the City Peninsula. Further benefits include concierge services, excellent transport links and communal terrace. Offered furnished. This property is available from the 8th June. No parking included.

Viewing by appointment with 1st avenue.

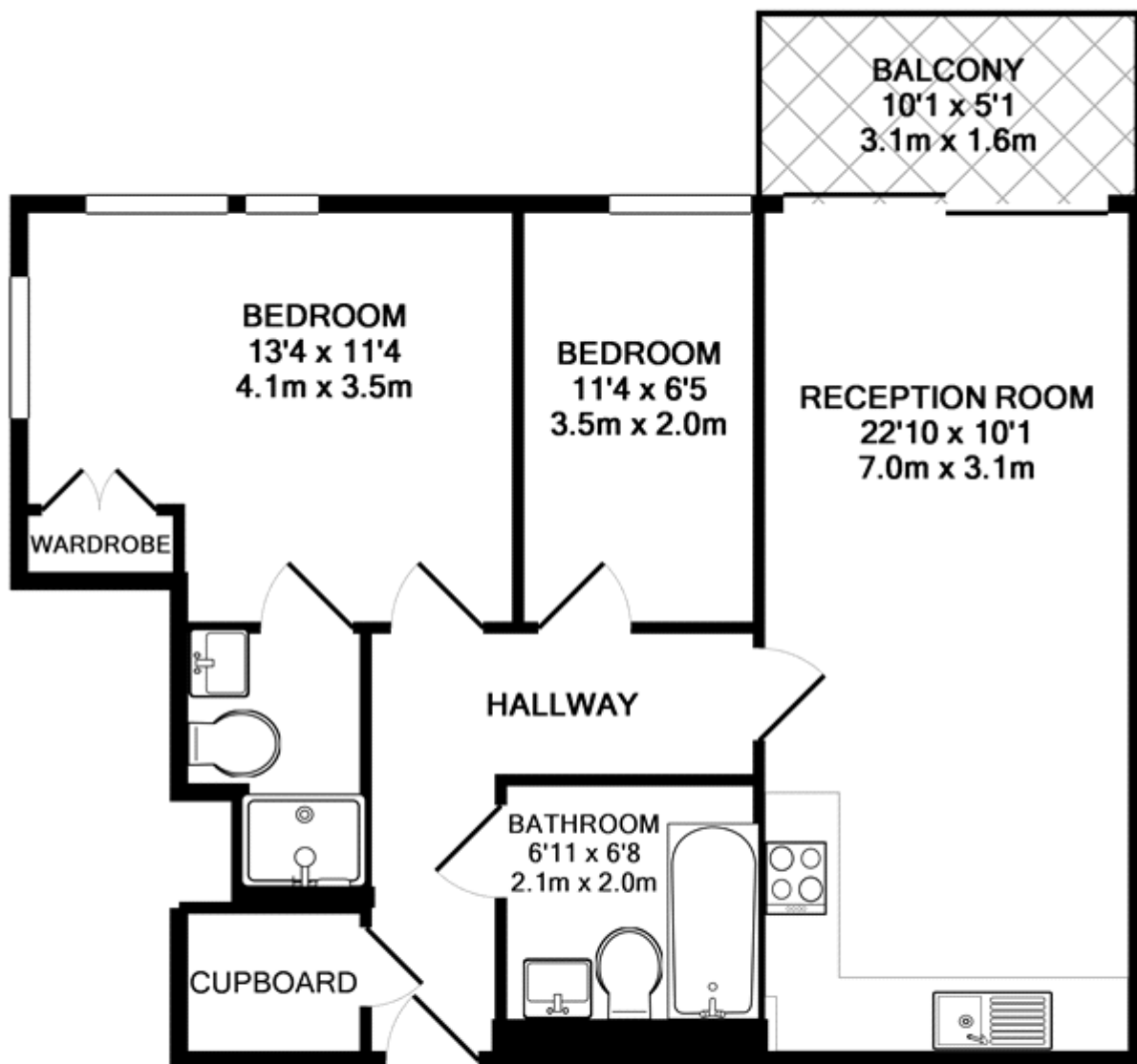
**Call: 020 8293 8600**

1st avenue, 128 Metcalfe Court, West Parkside, London SE10 0EL  
email: [info@1stavenue.co.uk](mailto:info@1stavenue.co.uk)

# City Peninsula, Barge Walk, Greenwich, SE10 0FP

£1,675 PCM

**1stavenue**  
Real Estate Services



TOTAL APPROX. FLOOR AREA 616 SQ.FT. (57.2 SQ.M.)

Whilst every attempt has been made to ensure the accuracy of the floor plan contained here, measurements of doors, windows, rooms and any other items are approximate and no responsibility is taken for any error, omission, or mis-statement. This plan is for illustrative purposes only and should be used as such by any prospective purchaser. The services, systems and appliances shown have not been tested and no guarantee as to their operability or efficiency can be given

Made with Metropix ©2016

Viewing by appointment with 1st avenue.

**Call: 020 8293 8600**

1st avenue, 128 Metcalfe Court, West Parkside, London SE10 0EL  
email: info@1stavenue.co.uk

**1stavenue**  
Real Estate Services