

90 Shepherds Lane, Dartford, Kent, DA1 2NN
£525,000 Freehold

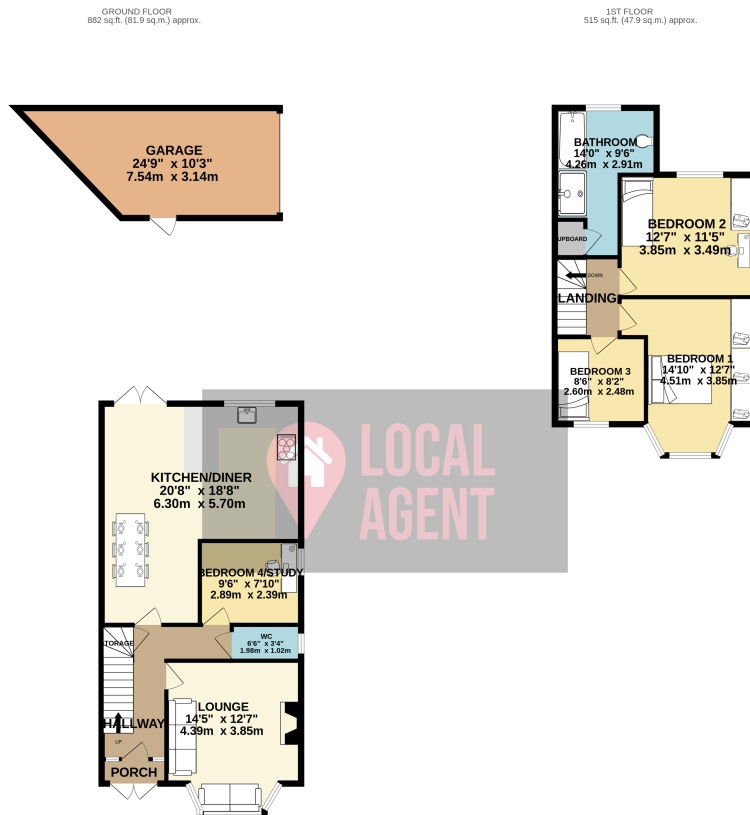
Description

Guide Price £525,000-£550,000

Located in the sought after West Dartford you will find this beautiful family home which has been extended to the rear to create excellent open plan living to the ground floor and one of the best bathrooms you will find in the area. All the bedrooms are good sized rooms with a 4th bedroom used as a study. Detached garage to the rear is a great size. The garden has been maintained well and ideal for children to play and BBQ area to relax and entertain.

Use our online diary to request your viewing!

Located in West Dartford and within walking distance to both Dartford and Crayford High Street. Crayford Retail Park and Crayford Station approximately 1 mile away with direct links to London and within the Oyster zone 6 has become popular for the London commuter and with easy access to the A2 and M25. Perfectly located for easy access to Dartford Grammar Schools and West Hill Primary Schools. Dartford Town Centre is a short walk away with many shops, cafes, pubs and restaurants. Other local benefits include the recently refurbished Fairfield Pool & Leisure Centre, David Lloyd Club and Dartford Football Stadium. For Dog walkers and hikers Dartford Heath offers some great local trails.



TOTAL FLOOR AREA: 1397 sq.ft. (129.8 sq.m.) approx.
Whilst every attempt has been made to ensure the accuracy of the floorplan contained here, measurements