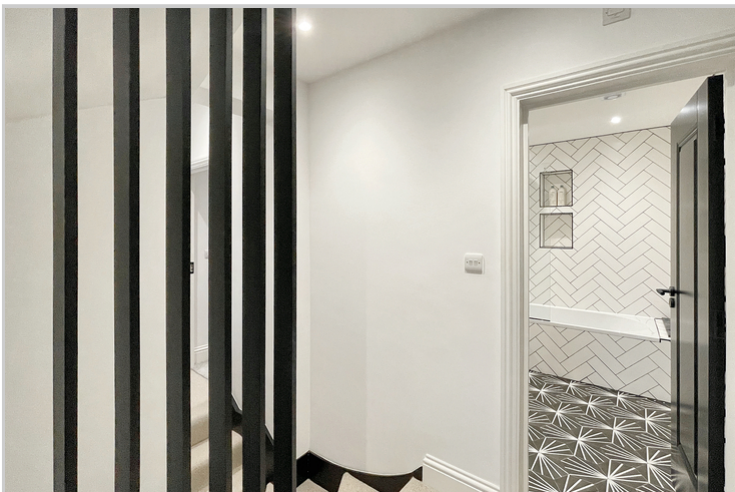


26 Scads Hill Close, Orpington, Kent, BR6 0EB

Property Images

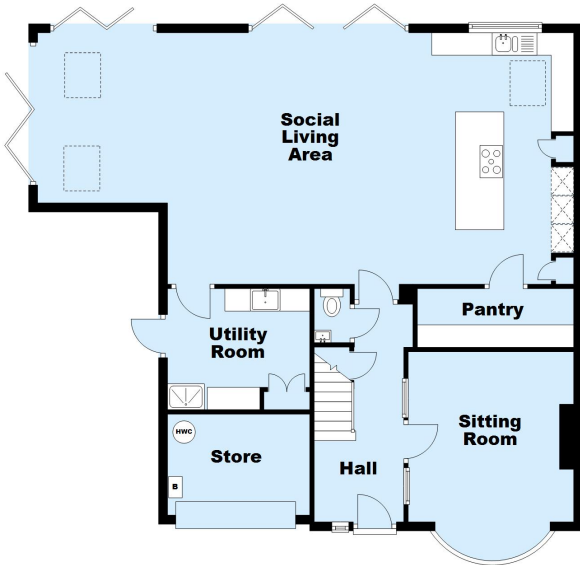




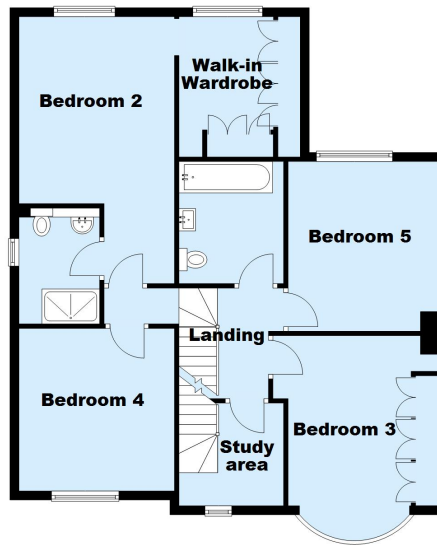




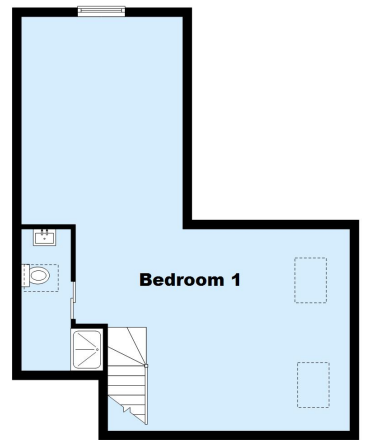
Ground Floor
Approx. 109.7 sq. metres (1180.3 sq. feet)



First Floor
Approx. 91.2 sq. metres (981.9 sq. feet)



Second Floor
Approx. 47.4 sq. metres (510.6 sq. feet)



Total area: approx. 248.3 sq. metres (2672.8 sq. feet)

This plan is for general layout guidance and may not be to scale.
Plan produced using PlanUp.