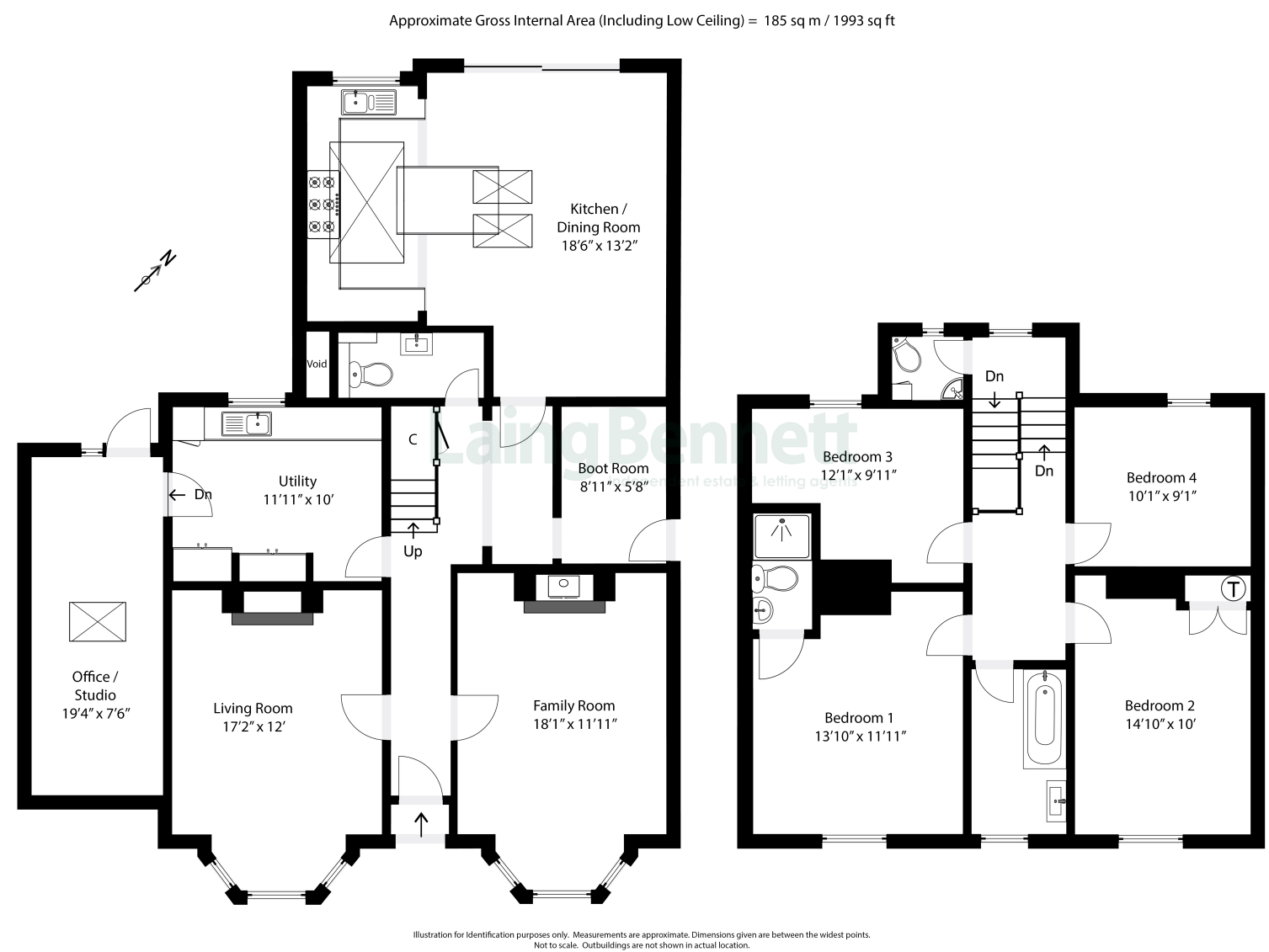




Beechwood, Church Road, Lyminge, Folkestone, Kent. CT18 8HZ



A distinctive double fronted period home of generous size with many splendid characterful features including high ceilings, stripped doors and deep bay windows. The current vendors have updated the property to provide stylish yet classic accommodation that would suit the needs of any modern family. EPC Rating: D

**Guide Price £750,000**

