



BYNG DRIVE
EN6 1UJ


HOME COUNTIES
ESTATE AGENTS



Freehold

£959,950

Accommodation

Delightful Four-Bedroom Family Home in a Peaceful Cul-de-Sac Setting

Located at the quiet cul-de-sac end of Byng Drive, adjacent to the open green spaces of Parkfield, this beautifully presented four-bedroom semi-detached home offers generous living space, tasteful décor, and a wonderful garden—perfect for modern family living. The property is in excellent decorative order throughout and benefits from a spacious rear extension, featuring a large, fully fitted kitchen with garden views. The kitchen flows seamlessly into a bright dining area, while a separate front-facing lounge boasts charming period details including stripped wooden floors, a gas fireplace, and Art Deco coving. Additional ground floor features include a utility area and a convenient guest WC.

Upstairs, the first-floor hosts two generous double bedrooms with exposed wooden floors, a single bedroom (currently used as a home office), and a fully tiled family bathroom with both a bath and separate shower. The loft has been thoughtfully converted to create a bright and airy master bedroom with Juliet balcony and stunning views over gardens and rooftops, complete with an en-suite shower room.

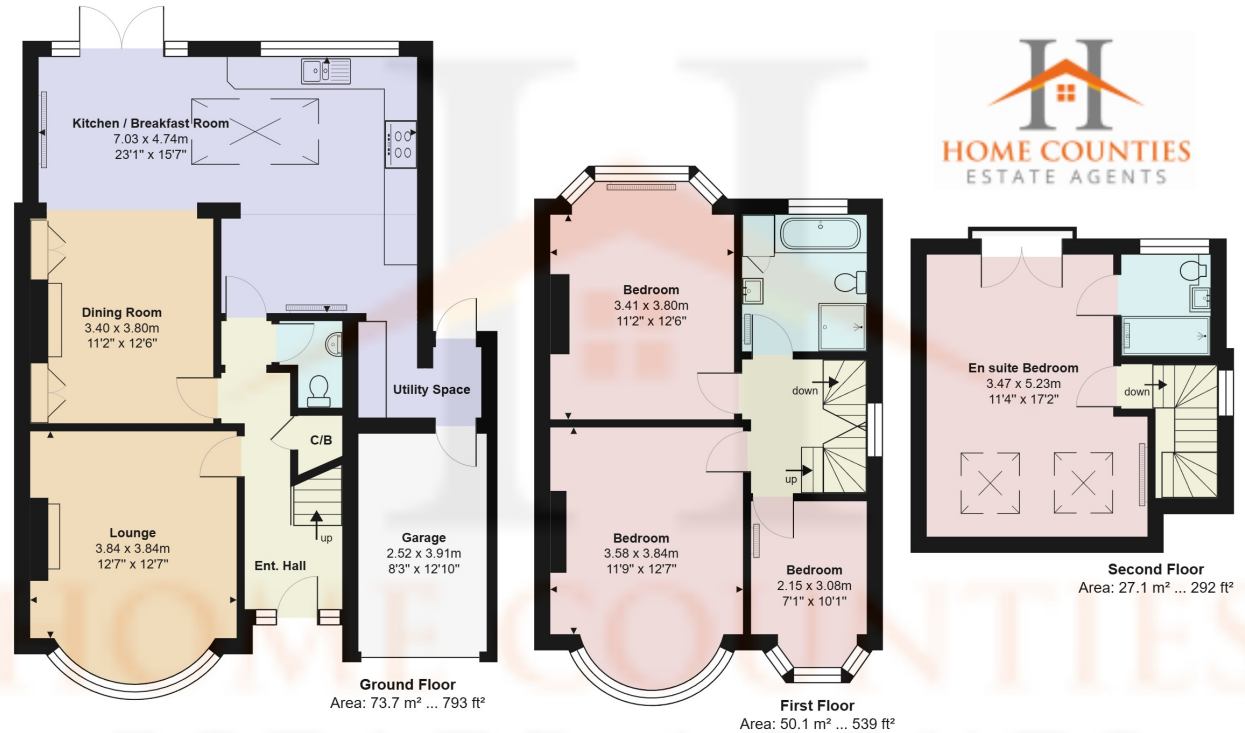
Externally, the property offers a stunning 120ft rear garden with a decked terrace stepping down into a mature, well-maintained lawn. There is side access via the garage and off-street parking to the front. Viewing highly recommended.



BYNG DRIVE, POTTERS BAR, HERTFORDSHIRE. EN6 1UJ



BYNG DRIVE, POTTERS BAR, HERTFORDSHIRE. EN6 1UJ



Byng Drive, Hertfordshire EN6

Total Area: 150.8 m² ... 1623 ft² (excluding garage)

All measurements are approximate and for display purposes only

IMPORTANT: we would like to inform prospective purchasers that these sales particulars have been prepared as a general guide only. A detailed survey has not been carried out, nor the services, appliances and fittings tested. Room sizes should not be relied upon for furnishing purposes and are approximate. If floor plans are included, they are for guidance only and may not be to scale. If there are any important matters likely to affect your decision to buy, please contact us before viewing the property.