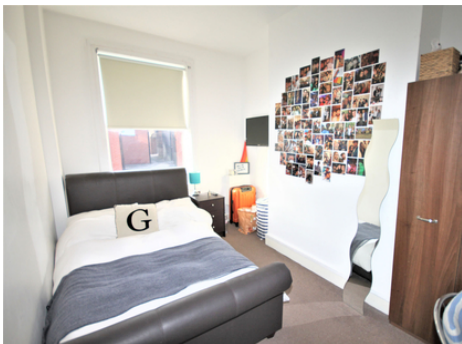




diamond
PROPERTIES



16 School View, Hyde Park, Leeds, West Yorkshire. LS6 1EN.

£2,151 Freehold

- 5 fully fitted bedrooms with TVs
- Central Hyde Park Area
- Five Bedrooms
- Two Bathrooms
- £99PPPW
- Available 01.07.2022

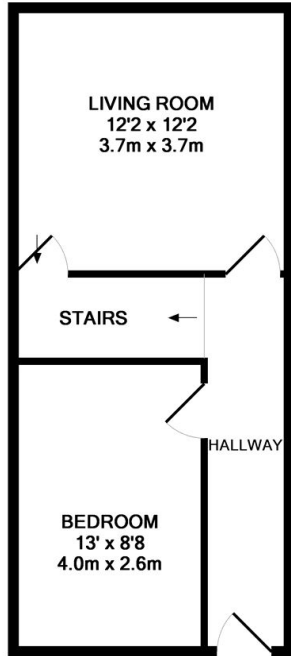
16 School View, Hyde Park, Leeds, West Yorkshire. LS6 1EN.

£2,151 Freehold

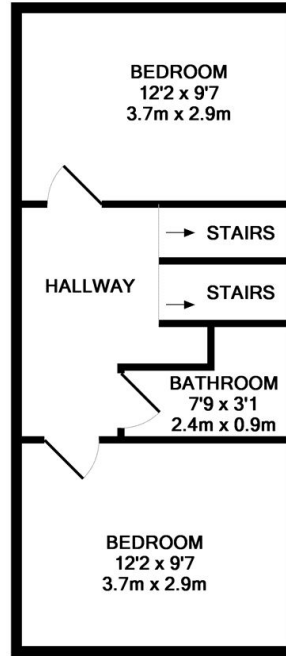
Recently redecorated, not one to miss! Ideal for both student or professional sharers. A beautiful 5 bedroom, 2 bathroom property in the centre of Hyde Park! This house has recently been refurbished to an extremely high standard, and each 5 bedrooms are fitted with leather beds and TVs. Other luxuries include leather settees and a new kitchen. Definitely not one to be missed! Viewing by appointment only.



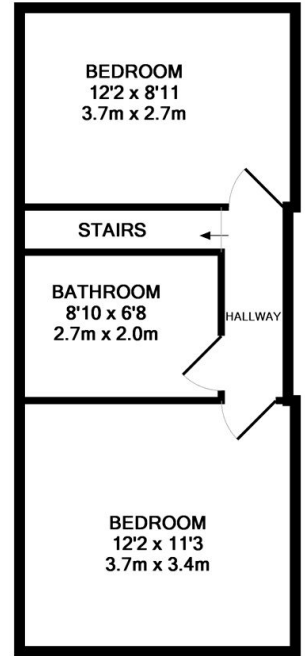
BASEMENT LEVEL
APPROX. FLOOR
AREA 172 SQ.FT.
(16.0 SQ.M.)



GROUND FLOOR
APPROX. FLOOR
AREA 362 SQ.FT.
(33.6 SQ.M.)



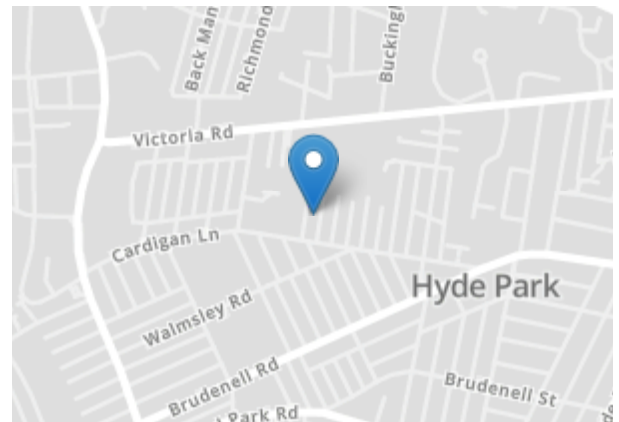
1ST FLOOR
APPROX. FLOOR
AREA 362 SQ.FT.
(33.6 SQ.M.)



2ND FLOOR
APPROX. FLOOR
AREA 359 SQ.FT.
(33.4 SQ.M.)

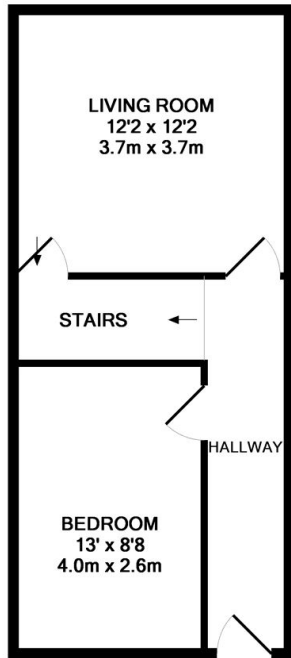
TOTAL APPROX. FLOOR AREA 1255 SQ.FT. (116.6 SQ.M.)

Whilst every attempt has been made to ensure the accuracy of the floor plan contained here, measurements of doors, windows, rooms and any other items are approximate and no responsibility is taken for any error, omission, or mis-statement. This plan is for illustrative purposes only and should be used as such by any prospective purchaser. The services, systems and appliances shown have not been tested and no guarantee as to their operability or efficiency can be given
Made with Metropix ©2013

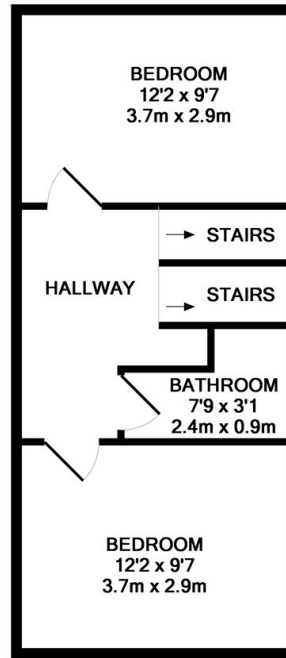




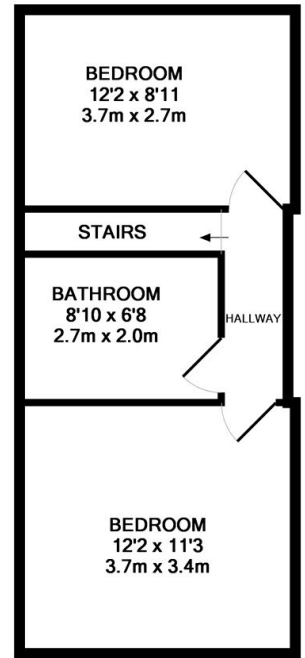
BASEMENT LEVEL
APPROX. FLOOR
AREA 172 SQ.FT.
(16.0 SQ.M.)



GROUND FLOOR
APPROX. FLOOR
AREA 362 SQ.FT.
(33.6 SQ.M.)



1ST FLOOR
APPROX. FLOOR
AREA 362 SQ.FT.
(33.6 SQ.M.)



2ND FLOOR
APPROX. FLOOR
AREA 359 SQ.FT.
(33.4 SQ.M.)

TOTAL APPROX. FLOOR AREA 1255 SQ.FT. (116.6 SQ.M.)

Whilst every attempt has been made to ensure the accuracy of the floor plan contained here, measurements of doors, windows, rooms and any other items are approximate and no responsibility is taken for any error, omission, or mis-statement. This plan is for illustrative purposes only and should be used as such by any prospective purchaser. The services, systems and appliances shown have not been tested and no guarantee as to their operability or efficiency can be given

Made with Metropix ©2013