

FOR SALE

Weltje Road,
Hammersmith, W6

Flat
Riverside

£500,000 sh of fh

2  2  1 

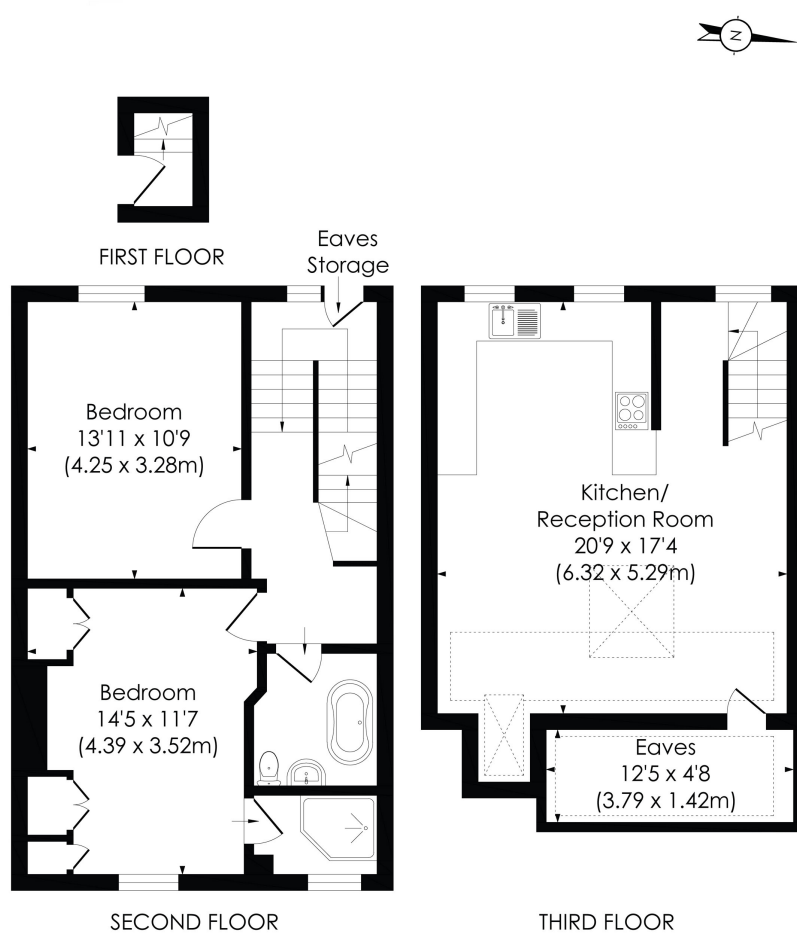


**horton
andgarton**

SALES / LETTINGS / PROPERTY MANAGEMENT

hortonandgarton.co.uk | Sales 020 8819 0510 | Lettings 020 8819 0511
172 King Street, Hammersmith, W6 0QU





WELTJE ROAD, W6

Approx. Gross Internal Floor Area
942 Sq' / 87.54 SqM (Including RHH)
808 Sq' / 75.10 SqM (Excluding RHH)

**horton
andgarton**

© Pixangle Property Marketing Ltd. info@pixangle.com Tel: 0208 870 2118

This floor plan has been prepared for the purpose of illustration only in accordance with the latest RICS code of measuring practice and is not to scale. All measurements and areas are approximate and whilst every effort has been made to ensure the accuracy of the plan contained here, no responsibility is taken for any error, omission or misstatement.



Split level maisonette | Two bedrooms - One bathroom |
 808 Sq' - 75.10 SqM | 20'9 x 17'4 Reception/Kitchen |
 EPC rating C | Riverside



hortonandgarton.co.uk
 Sales 020 8819 0510
 Lettings 020 8819 0511

172 King Street, Hammersmith, W6 0QU