





- Modern Semi-detached House
- Fitted Kitchen
- Good Size Living Room
- Three Bedrooms
- Modern Bathroom
- Private Garden
- Two Parking Spaces

Description

This is a modern semi-detached house, located on the new Winnington Village. The property is offered in excellent decorative order and features gas central heating and PVCu double glazing, the accommodation comprises: Entrance hall, cloakroom/WC, fitted kitchen, large living room, first floor landing, three bedrooms and bathroom. Outside there is a private rear garden and there are two parking spaces to the front. Available for immediate possession, Unfurnished, restrictions apply.



Location
Tenure

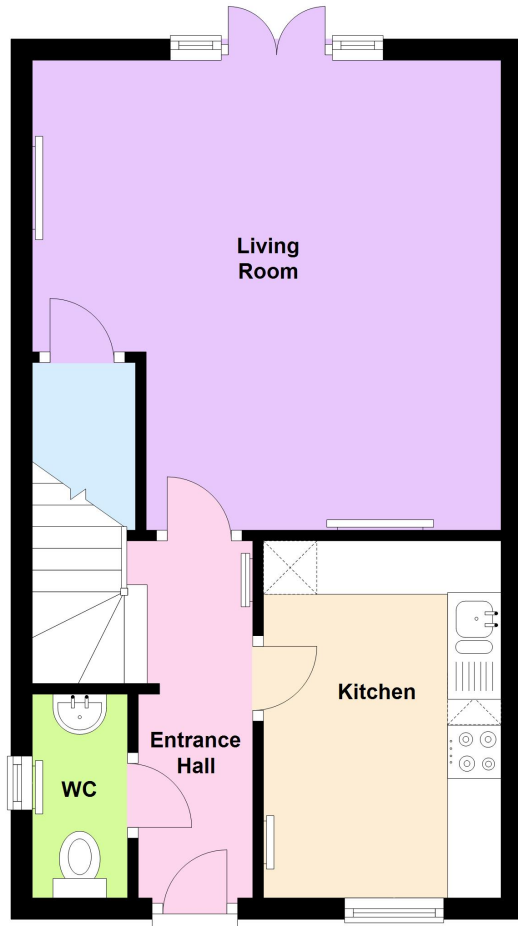
EPC Rating:

Important Notes
Type Here



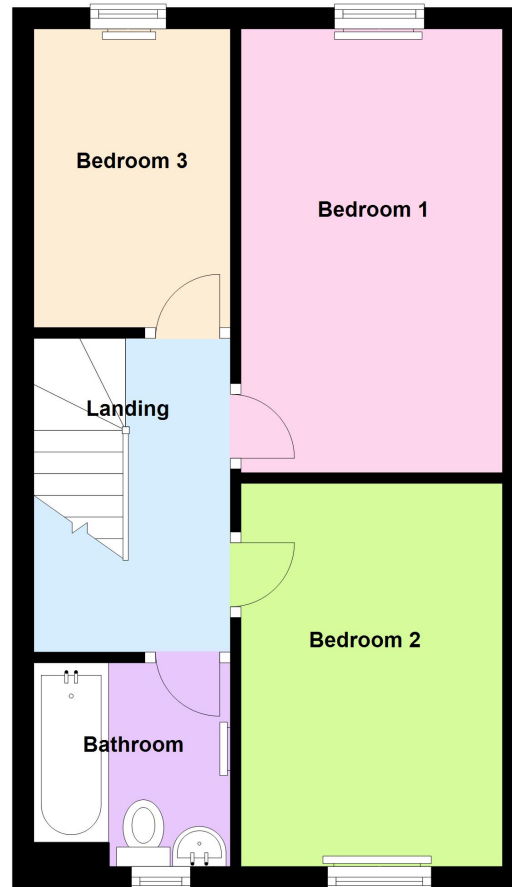
Ground Floor

Approx. 34.4 sq. metres (370.4 sq. feet)



First Floor

Approx. 34.4 sq. metres (370.3 sq. feet)



Total area: approx. 68.8 sq. metres (740.6 sq. feet)

