



9 Whittle Court,
Knowlhill, Milton Keynes, MK5 8FT

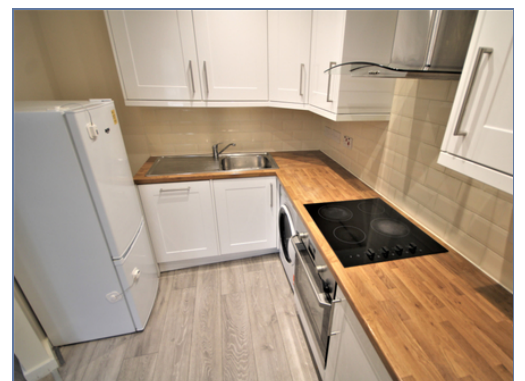
Tel: 01908 231 551
mail@elevationstateagents.com



9 The Sidings, Bletchley, Milton Keynes, Buckinghamshire, MK2 2XE

£205,000 Leasehold

- Two double bedrooms
- Can rent out for £1000 pcm
- Large Ground floor apartment
- Within a stone throw away from the Train station
- Allocated and Visitor Parking
- EPC- C
- No rent & Service Charge is £600py
- EPC Rating C





Chain Free

A well presented, two bedroom apartment offered for sale in Bletchley. The accommodation briefly comprises of a spacious lounge/diner, a chic kitchen with integrated oven, two double bedrooms, a three piece family bathroom and allocated parking for one car.



In the popular area of Bletchley there are nearby leisure facilities that include Windmill Hill Golf Club and Bletchley Leisure Centre. The local Shopping facilities include Bletchley Town and MK1 shopping and food centre. It is within close proximity to canal walks, Bletchley railway station and M1 junction 13. It is also within great c=school catchments including first and secondary school.

Council Tax Band- B

EPC- C

Disclaimer

Whilst we have endeavoured to prepare our sales particulars accurately none of the services, appliances or equipment have been tested. A buyer should satisfy themselves on such matters prior to purchase. Any measurements or distances mentioned in these particulars are for guide reference only. If such particulars are fundamental to a purchase, buyers should rely on their own enquiries. All enquiries should be directed to Elevation Estate Agents in the first instance.

