

Stanfords

— sales & lettings —



Guide Price £500,000
3 bedroom terraced house

Sandhurst Road
Catford

Read all about it...

A beautifully maintained terraced family home in the ever-popular Corbett Estate on Sandhurst Road. This house has a fantastic open-plan lounge/reception area to the front of the property, a beautiful contemporary three-piece bathroom, a new modern fitted kitchen with built-in appliances and a low-maintenance, South facing landscaped garden with corner seated decking area and plenty of space to enjoy the sun. Upstairs on the first floor are three bedrooms with original treated doors and floorboards.

The Corbett Estate is a family-dominated area with a strong community feel to it, falling within the catchment of sought-after primary schools. This property is situated within a mile of Catford and Catford bridge Stations, providing a range of commuter services into Central London, and in close proximity to a variety of amenities, including a Co-op and local independent shops and cafes. Catford town center can be found less than a mile away and has a wide range of boutique shops, bars and restaurants.

Tenure: Freehold | **Council Tax:** Lewisham Band C

GROUND FLOOR

Entrance Hall

Pendant light, stained glass front door, engineered wood flooring

Living Room

21' 4" x 12' 1" (6.50m x 3.68m)

Pendant light, double-glazed window to front, radiator, herringbone engineered wood flooring

Kitchen

14' 6" x 7' 3" (4.42m x 2.21m)

Spotlights, matching wall and base units, stainless steel sink with drainer and single mixer tap, tile splashback, quartz worktops, integrated oven and electric hob, extractor hood, tile flooring, french doors to garden.

Bathroom

7' 9" x 7' 2" (2.36m x 2.18m)

Spotlights, double glazed window to rear, wash basin with vanity unit, panel enclosed bath/shower, heated towel rails, W/C, tile flooring.

FIRST FLOOR

Landing

Pendant light, double glazed window to rear, storage cupboard, original wooden floorboards

Bedroom

10' 1" x 9' 4" (3.07m x 2.84m)

Pendant light, double-glazed window to rear, radiator, original wooden floorboards.

Bedroom

10' 11" x 6' 7" (3.33m x 2.01m)

Pendant light, double-glazed window to front, radiator, original wooden floorboards.

Bedroom

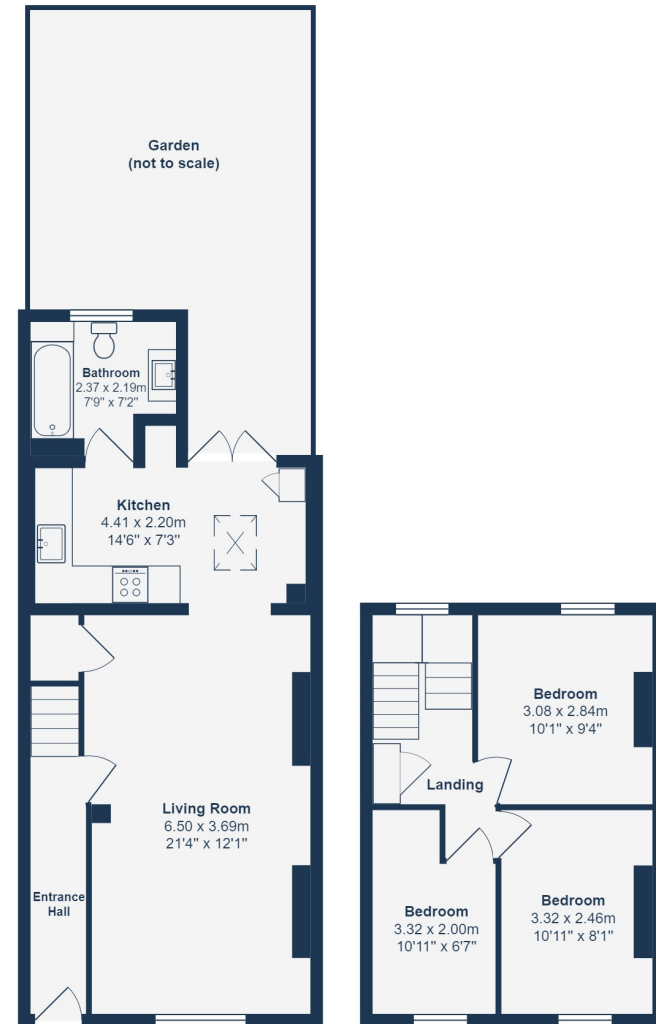
10' 11" x 6' 7" (3.33m x 2.01m)

Pendant light, double-glazed window to front, radiator, original wooden floorboards.

OUTSIDE

Garden

Wooden decking area, laid lawn, shed



Ground Floor

First Floor

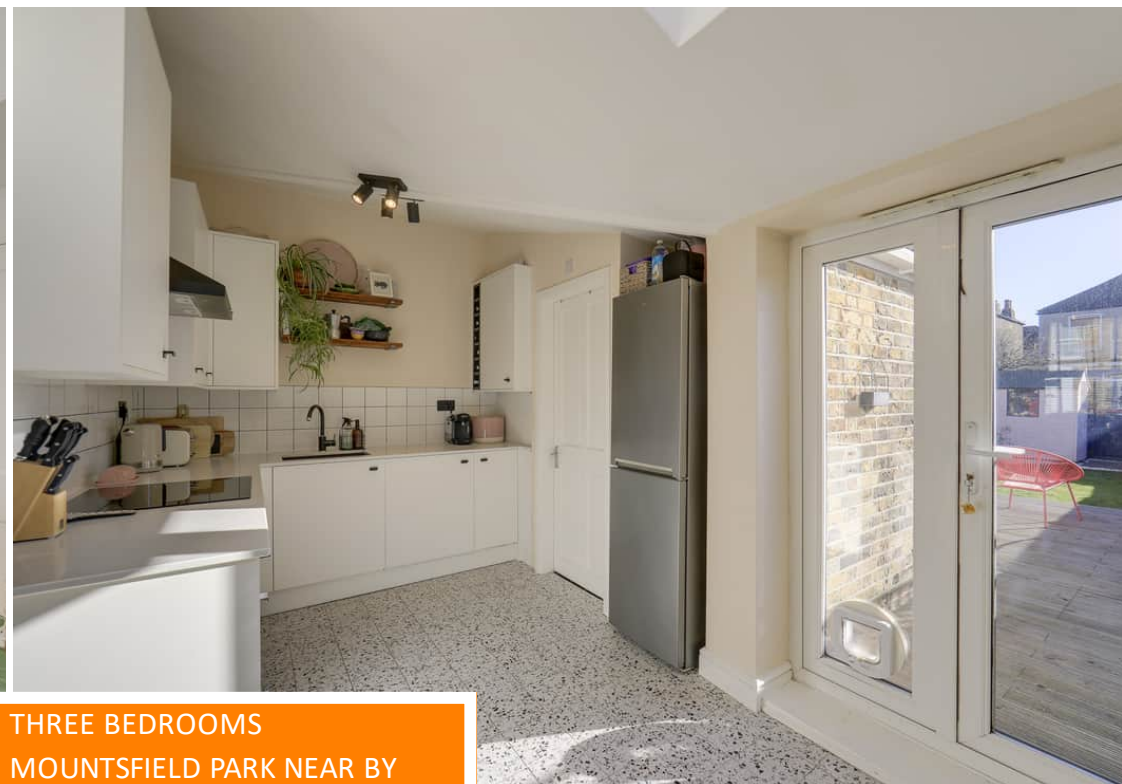
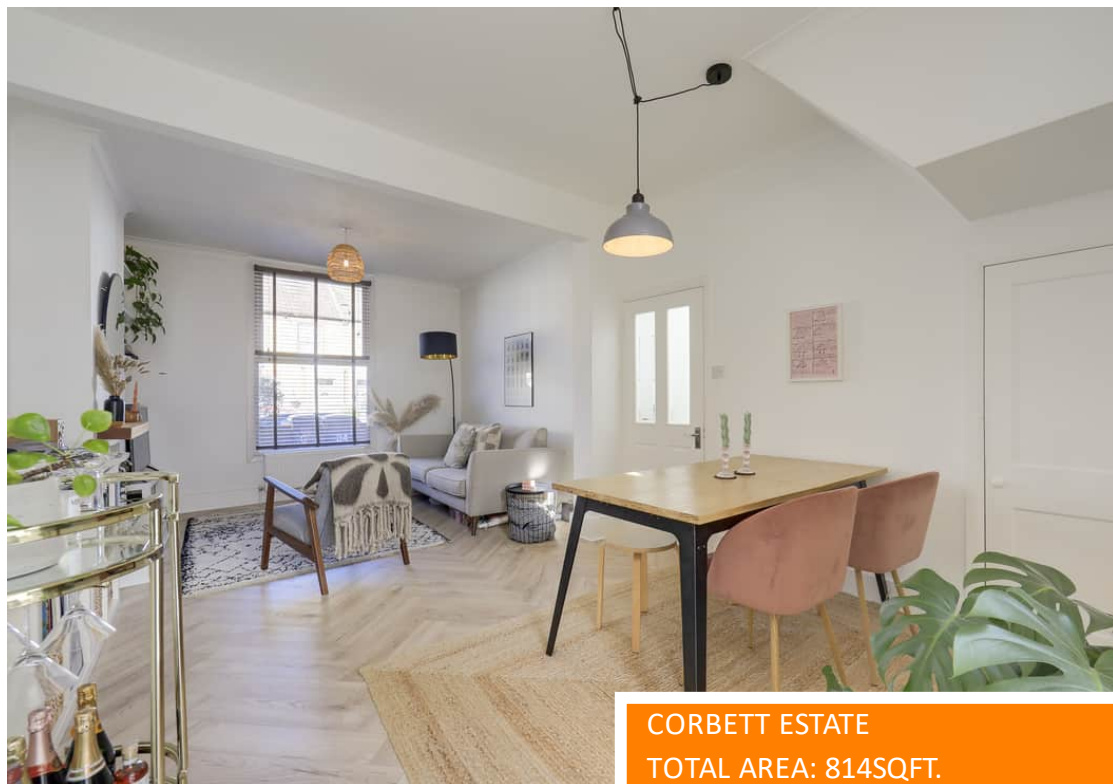
Total Area: 75.7 m² ... 814 ft²

Drawn for Stanfords Sales & Lettings
This floorplan is for illustrative purposes only. Whilst every effort has been made to ensure the accuracy of the plan, the dimensions and total area are approximated only and should not be relied upon.

Like what you see?

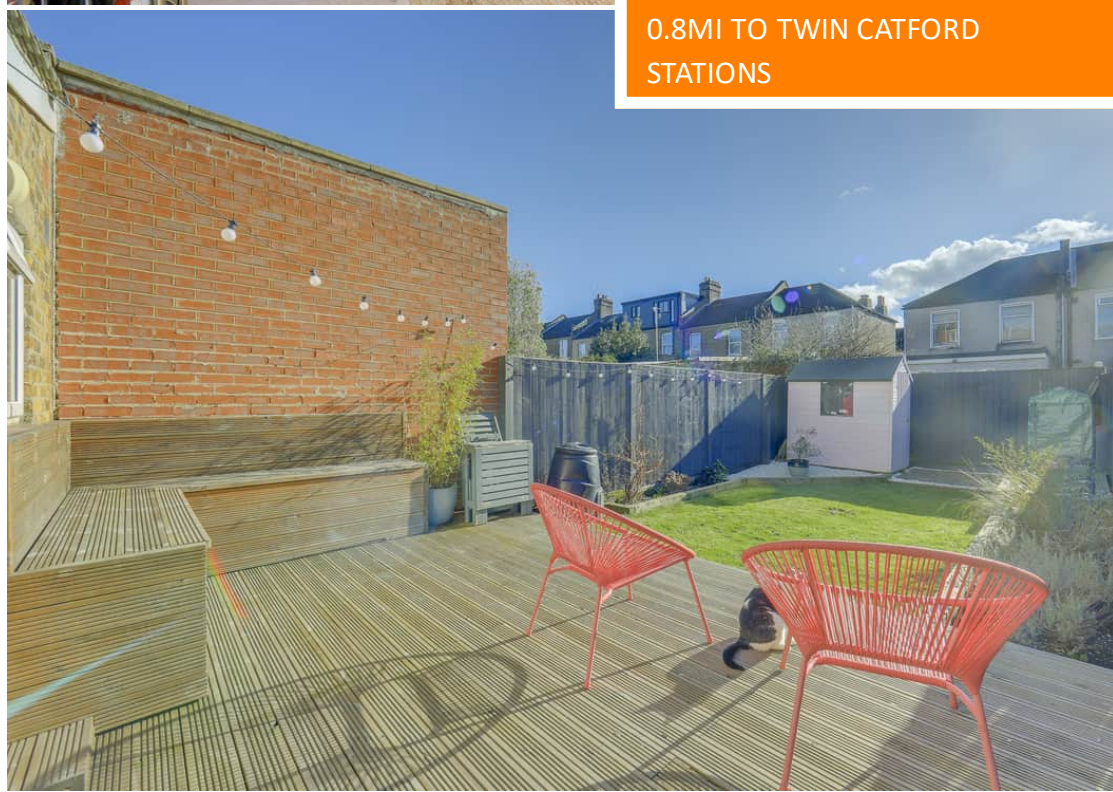
Call 020 8690 3656 or email us at catford@stanfordestates.london
to arrange a viewing or request further information

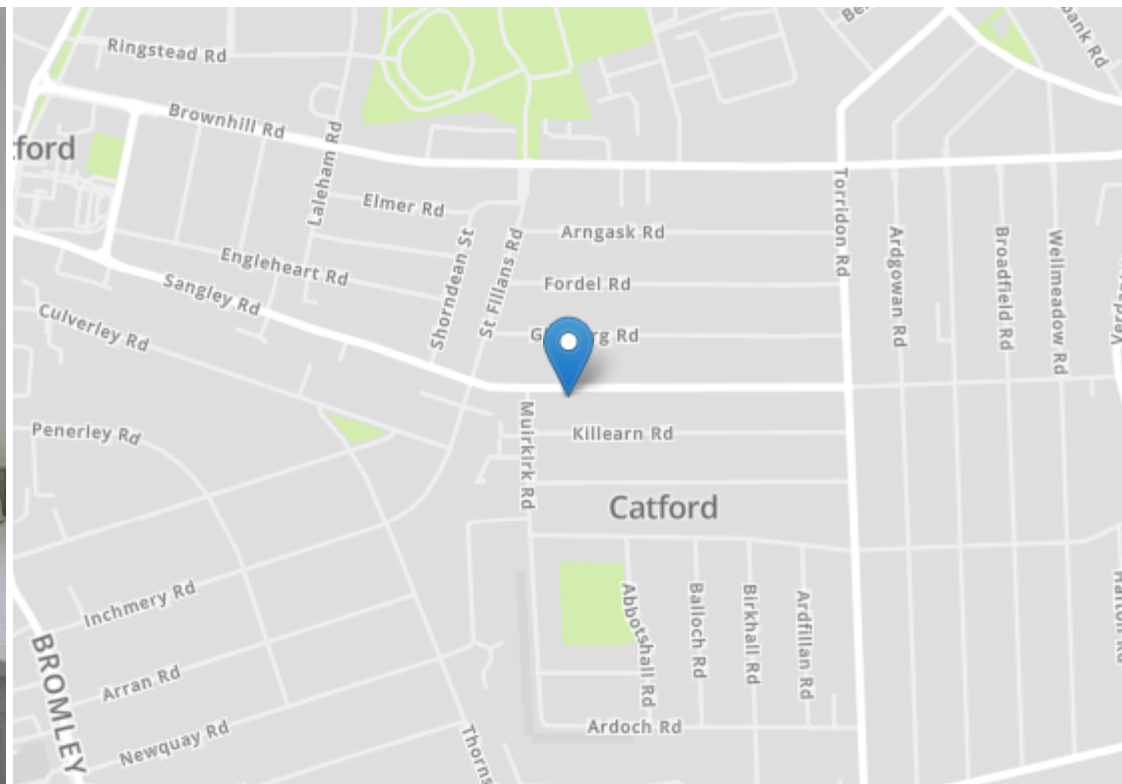
www.stanfordestates.london



CORBETT ESTATE
TOTAL AREA: 814SQFT.
0.8MI TO TWIN CATFORD
STATIONS

THREE BEDROOMS
MOUNTSFIELD PARK NEAR BY
0.9MI TO HITHER GREEN STATION





Energy Efficiency Rating		Current	Potential
Very energy efficient - lower running costs			
(92+)	A		87
(81-91)	B		
(69-80)	C	71	
(55-68)	D		
(39-54)	E		
(21-38)	F		
(1-20)	G		
Not energy efficient - higher running costs			
England, Scotland & Wales		EU Directive 2002/91/EC	



Robert Stanford Estates property particulars are produced in accordance with the Consumer Rights Act (2015) and should not be construed as a contract or offer. The contents of these property particulars are to provide a general illustration only and are inconsequential to any decisions to purchase a property. A potential buyer accepts that all representations made by these particulars are made in good faith on behalf of the seller and require verification by a buyers' legal and professional representatives prior to an exchange of contracts. We offer no guarantees for any structural component, service or appliance and while we make every effort to take accurate measurements and distances, they are illustrative only. Any reliance you place on information within these particulars is therefore strictly at your own risk.