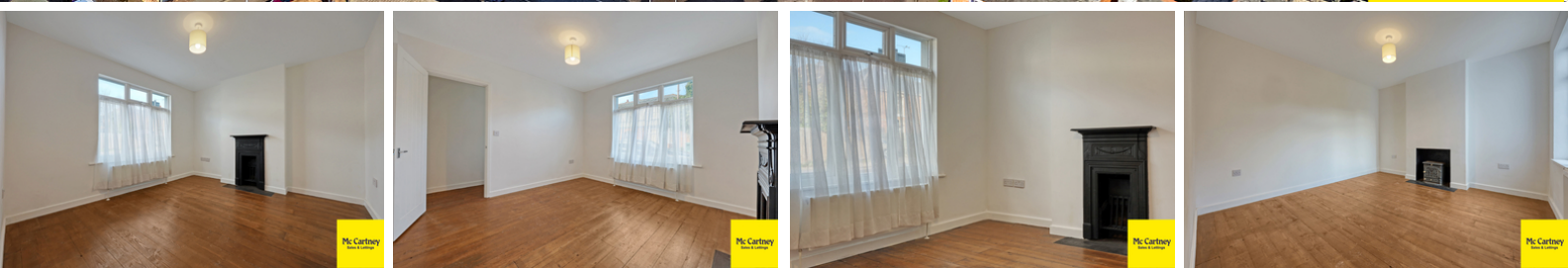


SOLD



Manor Road, Chelmsford

£450,000 Freehold

- No Onward Chain
- Trains to Stratford from 31 minutes & Liverpool Street from 36 minutes
- Three bedrooms
- Recently renovated
- Walking distance of the High Street & railway station
- Viewing Advised

Stunning Fully Renovated Three-Bedroom Home in Sought-After Old Moulsham

No Onward Chain | Extensive High-Quality Refurbishment | Prime Location



Mc Cartney
Sales & Lettings

