



**daniels**  
danielsestateagents.co.uk

**daniels**  
danielsestateagents.co.uk





**Wrotesley Road, Kensal Green, London NW10 5YE**  
**£1,050,000 - Freehold**





## PROPERTY DESCRIPTION

Situated on a desirable corner plot on Wrotesley Road, NW10, this spacious four-bedroom family home offers generous living accommodation with excellent scope for modernisation and extension (subject to the usual planning consents).

The property benefits from a prominent corner position, providing enhanced natural light and the potential for further development. Internally, the accommodation is well-proportioned throughout, comprising two reception rooms ideal for family living and entertaining, along with a separate kitchen offering direct access to the outdoor space.

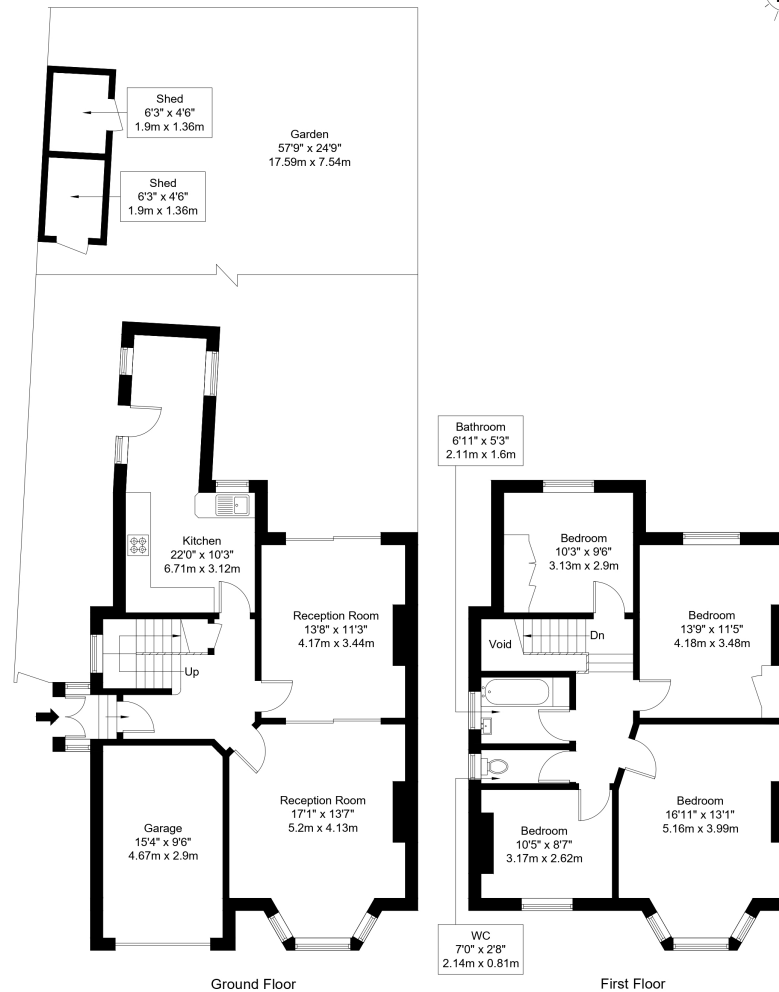
Upstairs, the home features four well-sized bedrooms, making it ideal for growing families or those requiring flexible home-working space. A family bathroom and additional storage complete the upper floors.

Externally, the corner plot allows for generous garden space and private garage and off-street parking, a rare advantage for the area.

The property is conveniently located close to local amenities, schools, and transport links, providing easy access into Central London and surrounding areas. This is a fantastic opportunity to acquire a substantial home in a popular residential location, offering both immediate comfort and long-term potential.

# Wrotesley Road, NW10 5YE

Approx Gross Internal Area = 144.8 sq m / 1559 sq ft



Ref :

Copyright **BLEU PLAN**

The Floor plan is not to scale and measurements and areas shown are approximate and therefore should be used for illustrative purposes only. The plan has been prepared in accordance with the RICS code of Measuring Practice and whilst we have confidence in the information produced it must not be relied on. Maximum lengths and widths are represented on the floor plan. If there is any aspect of particular importance, you should carry out or commission your own inspection of the property.

Copyright @ BleuPlan