



83A High Street, Henlow, Bedfordshire, SG16 6AB

£995,000

Quality built individual detached family home situated in this private gated courtyard setting with panoramic views over open countryside. This high specification beautifully designed property offers bright and spacious living with a raised balcony/seating area taking in the west facing aspect. Impressive reception hallway leading to all principal rooms including a 39ft family/kitchen/breakfast room with log burner and bi-fold windows to balcony patio and an impressive kitchen with a extensive range off built in appliances plus utility room. Upstairs has an landing with feature full height windows leading to all the bedrooms including a master bedroom with dressing room and en-suite, plus a Juliet balcony to enjoy the open views, a guest bedroom with en-suite and two further double bedrooms and a luxury bathroom with shower cubicle. Outside is a wraparound private garden with open aspect and extensive off-road parking is provided by a double garage and driveway.

Lane &
BENNETTS

Approximate Gross Internal Area
 Ground Floor = 117.5 sq m / 1,265 sq ft
 First Floor = 112.3 sq m / 1,209 sq ft
 Garage / Workshop = 35.8 sq m / 385 sq ft
 Total = 265.6 sq m / 2,859 sq ft

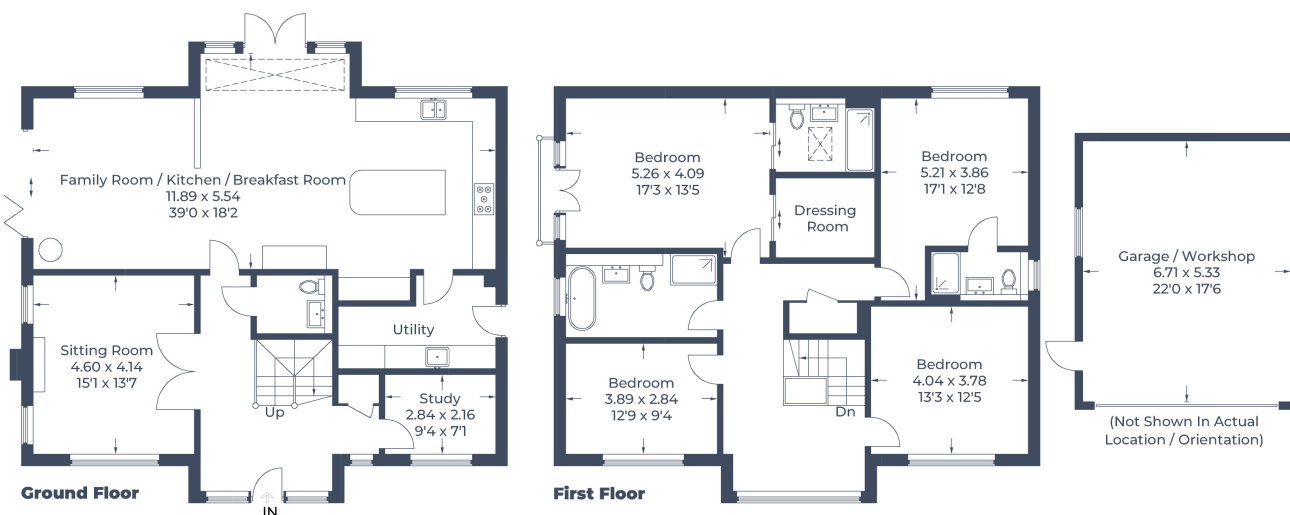


Illustration for identification purposes only,
 measurements are approximate, not to scale.
 © CJ Property Marketing Produced for Lane & Bennetts

- BEAUTIFULLY DESIGNED FAMILY HOME IN GATED COURTYARD SETTING
- INDIVIDUALLY DESIGNED OFFERING IMPRESSIVE BRIGHT + SPACIOUS ACCOMMODATION
- HIGH END SPECIFICATION BEAUTIFULLY PRESENTED THROUGHOUT
- 39FT FAMILY/KITCHEN/BREAKFAST ROOM + UTILITY
- SITTING ROOM + STUDY
- MASTER BEDROOM + DRESSING AREA + EN-SUITE
- THREE FURTHER DOUBLE BEDROOM + GUEST EN-SUITE + FAMILY BATHROOM
- WRAP AROUND GARDEN WITH RAISED PATIO/SITTING AREAS
- DOUBLE GARAGE & AMPLE PARKING
- PANORAMIC COUNTRYSIDE VIEWS
- COUNCIL TAX BAND G / EPC B

