



**266 Alexander Road, Glenrothes, Fife, KY7 4ED**

Well Presented & Spacious, Flexible Four Bedroom, Semi Detached Home.

Up to date price and viewing info at [mov8realestate.com/property](https://mov8realestate.com/property)

**espc** **rightmove** **Zoopla**  
find your happy

# Property Description

Well-presented and spacious, flexible four-bedroom, semi-detached family home, with gardens and a driveway. Set on a generous plot, located in an established residential area of Glenrothes, Fife.

Comprises an; entrance hall, living room, kitchen, four flexible double bedrooms, and a shower room.

Features include a modern bathroom and fitted kitchen with appliances included, contemporary flooring, gas central heating and double glazing. In addition, there is excellent storage including wardrobes for each bedroom, a loft, and multiple TV points.

Externally there is a lawn to the front and a multi-vehicle driveway, whilst an enclosed rear garden includes a lawn and patio.

The entrance hallway features wood-effect flooring and gives access to the carpeted stairway, the living room and bedroom four. Set to the front a good-sized living room features French patio doors to the garden, a feature fireplace, wood-effect flooring and a central light fitting. Set adjacent,

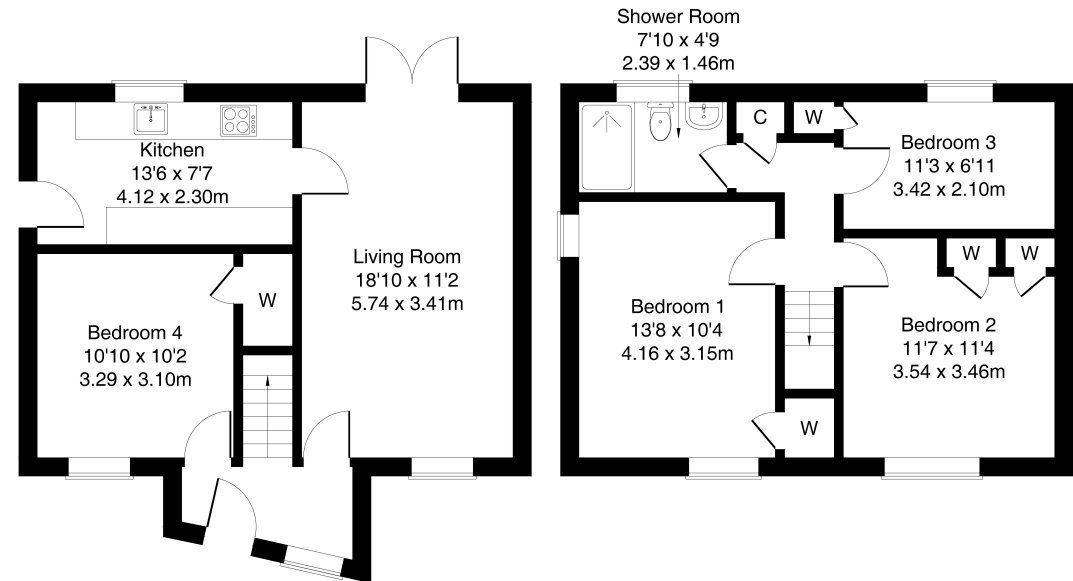
the bright modern kitchen includes stone-effect worktops, a sink with drainer, tiled splashbacks, and an integrated oven and gas hob with a canopy above, fridge/freezer and a washing machine. completing downstairs, bedroom four features carpeted flooring, a built-in cupboard and a central light fixture.

Upstairs, two double bedrooms are complete with carpeted flooring, built-in cupboards and central light fixtures, whilst a similarly finished single bedroom is set aside. Completing the accommodation, the family shower room has a side aspect window and is fitted with a modern two-piece suite, including a mains shower with enclosure, panelled splash walls and flooring.



**266 Alexander Road, Glenrothes, Fife, KY7 4ED**

Approximate Gross Internal Area: (990 sq ft - 92 sq m.)



**Ground Floor**

**First Floor**

Legal Disclaimer : Floor-plan and measurements are for illustrative guidance only, and not intended to form part of any contract.

## Area Description





Glenrothes is Fife's third largest town, with a mixture of residential properties throughout. Retail opportunities include the Kingdom Shopping Centre, with a broad range of high-street names, with supermarkets including an ASDA, ALDI, Lidl and Marks & Spencer. The Michael Woods Centre provides extensive modern sport and leisure facilities, whilst Glenrothes boasts its very own 18-hole golf

course, cinema and theatre in the Rothes Halls. Both primary and secondary schooling are well provided for, with further education available at The Adam Smith College at the Stenton campus of Fife College. For the commuter, the A92 allows rapid access to Edinburgh and the central belt and there are railway stations at both Thornton and Markinch.





## Our Services

-  Free pre-sale property valuations
-  Great value fixed estate agency fees
-  Extensive buyer matching database
-  Purchase and sale conveyancing

## Contact Us

0345 646 0208

[sales@mov8realestate.com](mailto:sales@mov8realestate.com)

[www.mov8.com](http://www.mov8.com)

## Head Office

6 Redheughs Rigg, Edinburgh, EH12 9DQ

## Glasgow Office

77 Renfrew Street, Glasgow, G2 3BZ



Estate Agents and Solicitors



These particulars do not form part of any contract and the statements or plans contained herein are not warranted nor are they to scale. All descriptions, dimensions, areas, reference to condition and necessary permissions for use and occupation and other details are given in good faith, and are believed to be correct, but any prospective purchaser should not rely on them as statements or representations of fact, and any prospective purchaser must satisfy themselves by inspection or otherwise as to the correctness of each of them. The Seller shall not be bound to accept the highest or any offer nor to accept a full offer of the Fixed Price where this is applicable. Approximate measurements have been taken by sonic device and measurements are most often taken to the widest point of any room or space. Services and appliances have not been tested for efficiency or safety and no warranty is given as to their compliance with any Regulations. Offers should be made using the Combined Standard Clauses.