

10 Redvers Cottages

KEARSNEY, Dover
CT16 3BS

£239,000 FREEHOLD

Draft Details...FOR SALE THROUGH BURNAP + ABEL...Welcome to this beautifully presented two-bedroom terraced home, perfectly positioned in the desirable and tranquil area of Kearsney Ave, Temple Ewell, Dover. Offering a wonderful blend of comfort, style, and practicality, this property is ideal for first-time buyers or anyone looking to enjoy peaceful living within easy reach of local amenities. Step inside to a spacious lounge, the perfect setting for relaxing or entertaining guests, leading through to a separate dining room ideal for family meals or gatherings. The kitchen provides ample workspace and storage, complemented by a useful utility area for added convenience. Upstairs, you'll find two generous double bedrooms, both offering a calm and comfortable retreat, along with a modern-style bathroom featuring contemporary fittings and a fresh, elegant finish. Outside, the property truly shines with its generous, sunny rear garden - a delightful space to unwind, host barbecues, or enjoy a bit of gardening in the sunshine. This charming home also benefits from double glazing and gas central heating, ensuring warmth and efficiency throughout the year. Tucked away in a quiet and friendly location, the property enjoys close proximity to local shops, schools, and transport links, making it the perfect balance of convenience and serenity. Whether you're stepping onto the property ladder or seeking a beautiful home in a peaceful setting, this fabulous Kearsney residence offers everything you need - and more. For your chance to view call Burnap + Abel on 01304 279107.



Dining Room

13' 6" x 13' 0" (4.11m x 3.96m)

Lounge

13' 6" x 10' 2" (4.11m x 3.10m)

Kitchen

9' 3" x 8' 0" (2.82m x 2.44m)

Utility

Bedroom One

13' 6" x 10' 4" (4.11m x 3.15m)

Bedroom Two

10' 4" x 9' 1" (3.15m x 2.77m)

Bathroom

9' 2" x 7' 11" (2.79m x 2.41m)

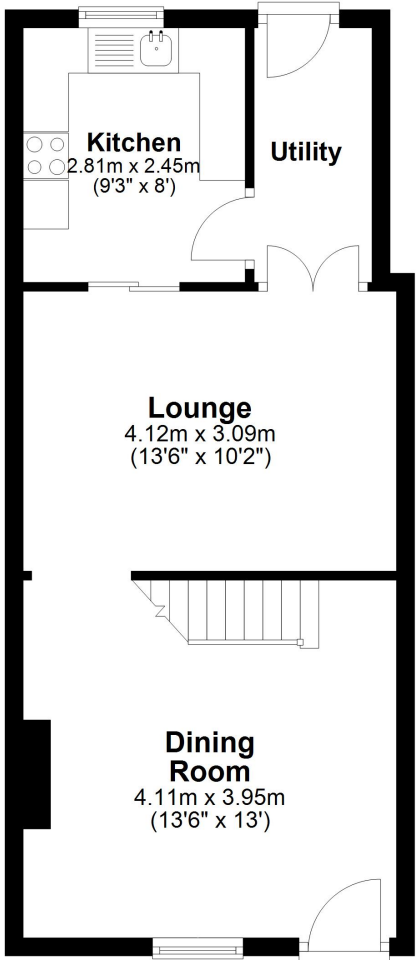
Garden

Area Information

Temple Ewell is found in an area outstanding natural beauty. Target Firs is famed for its stunning views across Temple Ewell and beyond. The area is in close proximity to all the historic seaside town of Dover has to offer with its schools, high street and high speed rail link into St Pancras, London. The location is also well situated for those who love their walks in beautiful picturesque countryside as well as access to the superb walled Cathedral city of Canterbury.

Ground Floor

Approx. 40.6 sq. metres (437.4 sq. feet)



First Floor

Approx. 35.6 sq. metres (382.9 sq. feet)

