



5 Langley Broom, Slough, Berkshire. SL3 8NB.
£795,000

- *New Home*
- Three Bedroom Detached
- Due for Completion Q2 of 2023
- Sought After Location
- Exceptional Living Space

- Conveniently located for Langley Grammar and Upton Court Grammar Schools
- Easy Access to Heathrow Airport, M4 & M25 Motorways
- Close to Langley Railway Station (Crossrail)

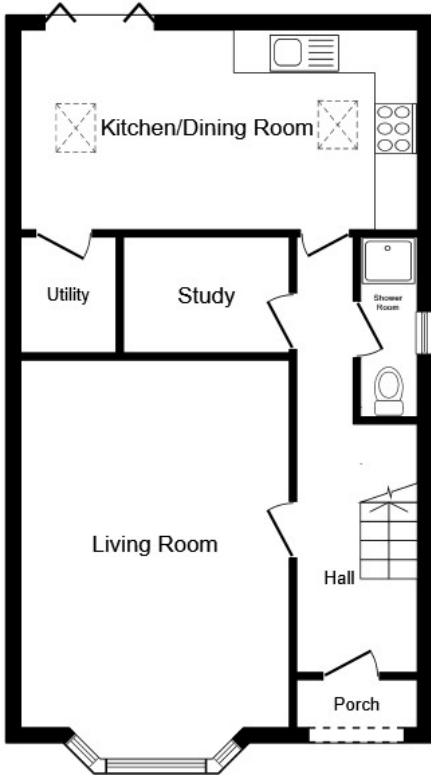
5 Langley Broom, Slough, Berkshire. SL3 8NB.

£795,000

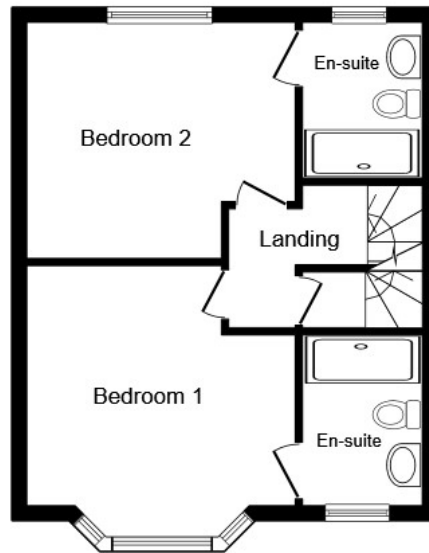
Offered to the market is this NEW BUILD, due for completion in Q2 of 2023, built by EXPERT PROPERTY DEVELOPERS with HIGH SPEC appliances, offering an EXCEPTIONAL level of living space throughout. DESIRABLE LOCATION, close to an array of Langley's schools and close to multiple TRANSPORT LINKS including Langley Railway Station (Crossrail) and both M4 & M25 Motorway Networks.

The property will benefit from two off-street parking spaces and private, enclosed rear gardens.

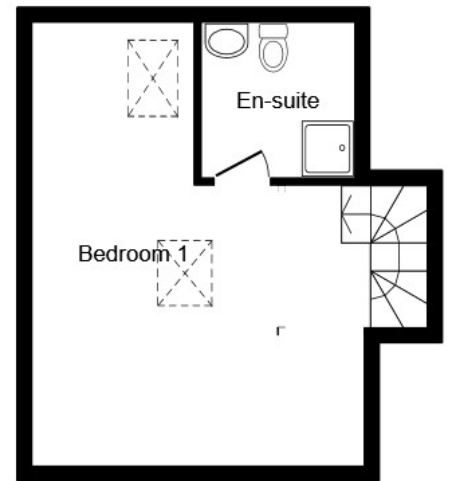
Call now to register your interest and avoid missing out on this incredible opportunity.



Ground Floor



First Floor



Second Floor

This plan is for illustration purposes only and may not be representative of the property. Plan not to scale. Powered by PropertyBox

