

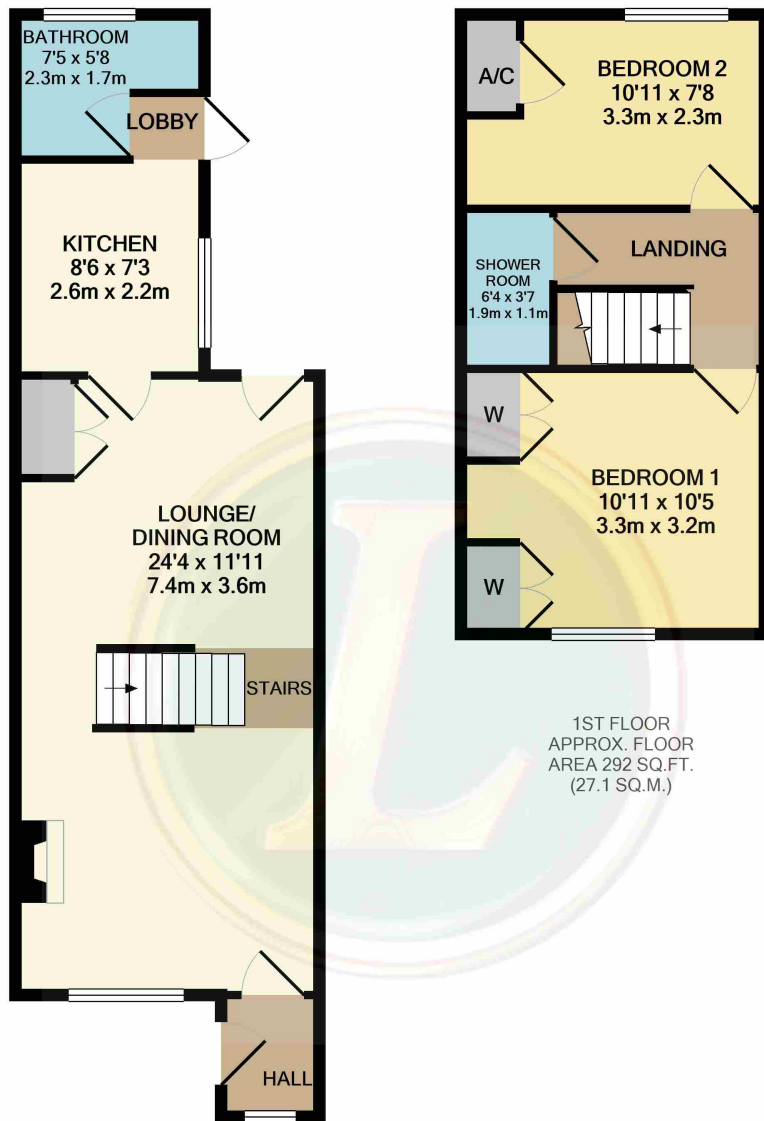


61 Pedley Lane, Clifton, Shefford, Bedfordshire, SG17 5QT

£260,000

Attractive two bedroom terraced cottage in sought after location overlooking fields to the front. The accommodation includes an entrance hall, spacious lounge/dining room, kitchen, rear lobby, bathroom, two good sized bedrooms and a shower room. Outside there is a garden to the rear and a block paved driveway to the front providing off road parking for up to two cars. This property is available chain free.





**GROUND FLOOR
APPROX. FLOOR
AREA 416 SQ.FT.
(38.7 SQ.M.)**

TOTAL APPROX. FLOOR AREA 708 SQ.FT. (65.8 SQ.M.)

Whilst every attempt has been made to ensure the accuracy of the floor plan contained here, measurements of doors, windows, rooms and any other items are approximate and no responsibility is taken for any error, omission, or mis-statement. This plan is for illustrative purposes only and should be used as such by any prospective purchaser. The services, systems and appliances shown have not been tested and no guarantee as to their operability or efficiency can be given

Made with Metropix ©2020

- TWO BEDROOM TERRACED COTTAGE
- TWO GOOD SIZE BEDROOMS
- SPACIOUS LOUNGE / DINING ROOM
- BATHROOM & SHOWER ROOM
- KITCHEN
- REAR GARDEN
- DRIVEWAY
- VIEWS OVER FIELDS
- SOUGHT AFTER LOCATION
- CHAIN FREE

