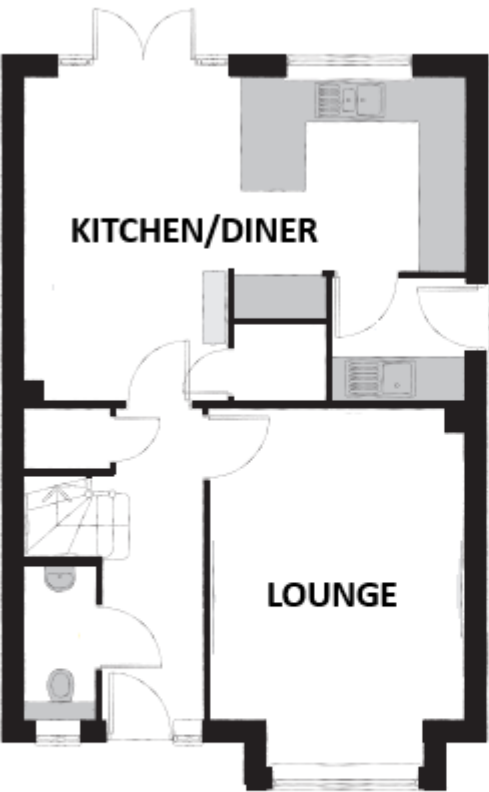
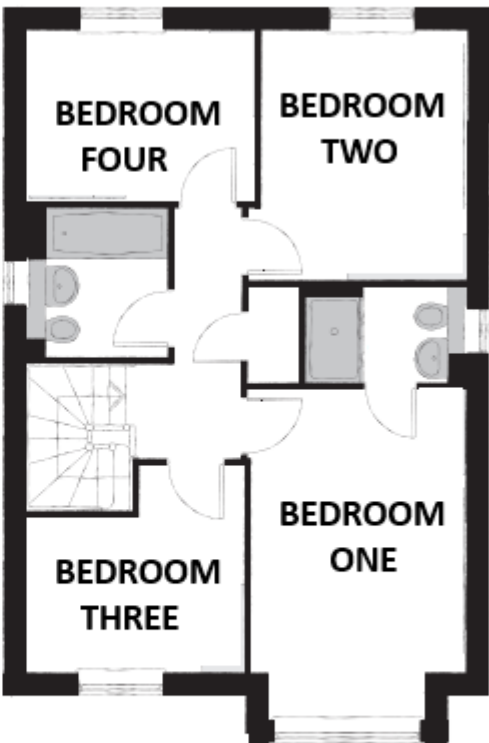




Kimber Estates



GROUND FLOOR



FIRST FLOOR



2 Hawthornden Street, Herne Bay, Kent, CT6 7FY

£440,000 Freehold

Kimber Estates are thrilled to present this exceptional, luxurious detached home. Built in the sought-after 'Scivener' style, this property offers expansive ground-floor living space and a range of thoughtful upgrades that set it apart from typical new builds. The home welcomes you with a bright and airy reception hall, a convenient downstairs cloakroom, and a charming front lounge. At the rear, an impressive kitchen-diner family room spans the width of the house, complete with built-in appliances and an adjoining utility room. The first floor offers four spacious double bedrooms, including a primary suite with an en-suite shower room. The family bathroom serves the remaining rooms. Outside, you'll find a sunny rear garden and ample off-road parking, making this property perfect for family living. Situated in the charming seaside town of Herne Bay on the north coast of Kent, the property is close to the town's beautiful pebble beaches and vibrant beach huts, offering a relaxed coastal lifestyle. Additionally, Herne Bay is just a short drive from the historic city of Canterbury, providing the best of both seaside and city living.



Kimber Estates are thrilled to present this exceptional, luxurious detached home. Built in the sought-after 'Scivener' style, this property offers expansive ground-floor living space and a range of thoughtful upgrades that set it apart from typical new builds. The home welcomes you with a bright and airy reception hall, a convenient downstairs cloakroom, and a charming front lounge. At the rear, an impressive kitchen-diner family room spans the width of the house, complete with built-in appliances and an adjoining utility room. The first floor offers four spacious double bedrooms, including a primary suite with an en-suite shower room. The family bathroom serves the remaining rooms. Outside, you'll find a sunny rear garden and ample off-road parking, making this property perfect for family living.

Situated in the charming seaside town of Herne Bay on the north coast of Kent, the property is close to the town's beautiful pebble beaches and vibrant beach huts, offering a relaxed coastal lifestyle. Additionally, Herne Bay is just a short drive from the historic city of Canterbury, providing the best of both seaside and city living.

GROUND FLOOR

Entrance Hallway

Cloakroom

Lounge

16'2 x 11'4 (4.93m x 3.46m)

Kitchen-Diner

19'8 x 14'5 (6.00m x 4.40m)

Utility Room

6'0 x 5'9 (1.83m x 1.75m)

FIRST FLOOR

Landing

Bedroom One

15'3 x 9'7 (4.65m x 2.92m)

Ensuite

Bedroom Two

11'3 x 9'2 (3.43m x 2.80m)

Bedroom Three

10'3 x 7'6 (3.13m x 2.29m)

Bedroom Four

9'9 x 9'4 (2.97m x 2.85m)

Bathroom

OUTSIDE

Driveway

Garage

COUNCIL TAX BAND E

