

## 1 Skye Close

FOLKESTONE, Folkestone  
CT20 3US

**£450,000 FREEHOLD**

FOR SALE WITH BURNAP + ABEL... Welcome to this stunning 4 bed detached house located in the desirable Skye Close in Folkestone. This home has been beautifully extended, offering modern and spacious living areas perfect for families or those who love to entertain. Step inside and be greeted by a spacious lounge with bi-folding doors leading out to the garden, creating a seamless indoor-outdoor living experience. The kitchen/diner is a chef's dream, complete with sleek countertops and ample storage space. Upstairs, you'll find the master bedroom with its own ensuite bathroom, providing privacy and comfort. Three additional bedrooms are perfect for children, guests, or even a home office. Outside, you'll find a detached garage and off-road parking for added convenience. Best of all, this property is being sold with no chain, making it move-in ready for its new owners. Don't miss your chance to own this magnificent home in Skye Close - schedule a viewing today!



**Entrance Hall**

**Lounge**

21' 8" x 16' 8" (6.60m x 5.08m)

**Kitchen/Dining Room**

16' 8" x 9' 7" (5.08m x 2.92m)

**W.C**

**First Floor Landing**

**Bedroom One**

15' 1" x 10' 8" (4.60m x 3.25m)

**En-Suite**

**Bedroom Two**

10' 2" x 8' 11" (3.10m x 2.72m)

**Bedroom Three**

9' 7" x 9' 5" (2.92m x 2.87m)

**Bedroom Four**

9' 7" x 7' 1" (2.92m x 2.16m)

**Family Bathroom**

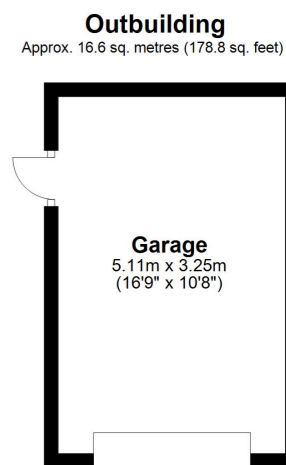
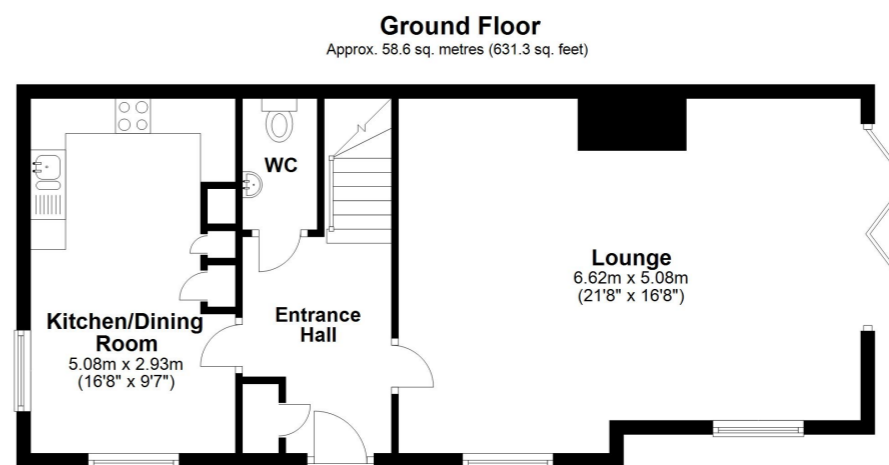
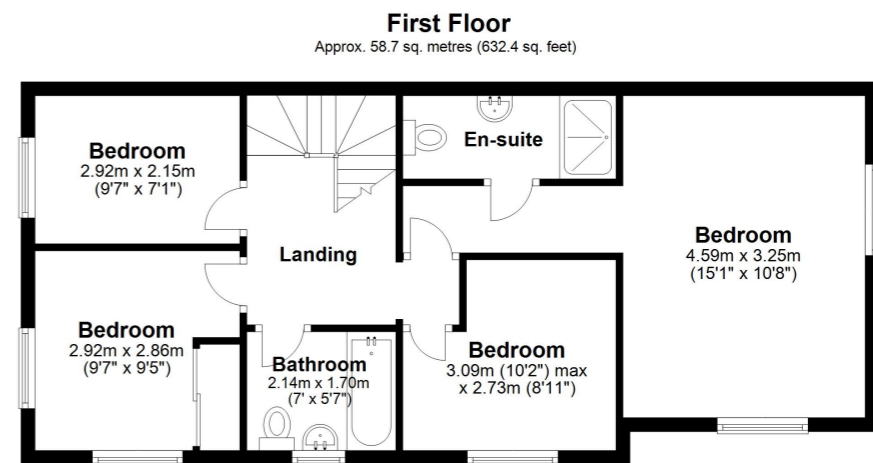
7' 0" x 5' 7" (2.13m x 1.70m)

**Garage**

16' 9" x 10' 8" (5.11m x 3.25m)

**Off Road Parking**

**Garden**



Total area: approx. 134.0 sq. metres (1442.4 sq. feet)

Whilst every attempt has been made to ensure the accuracy of the floor plan contained here, measurements of doors, windows, rooms and any other items are approximate and no responsibility is taken for any error, omission or mis-statement. This plan is for illustrative purposes only and should be used as such by any prospective purchaser.  
Plan produced using PlanUp.

