



Perry Street | Billericay | £700,000





# Perry Street

Billericay | Essex | CM12 0RF

Located on the popular North side of Billericay and within a short walk of local schools Buttsbury and Mayflower is this recently renovated four bedroom family home. This home can only be described as Doctors Who's Tardis with its deceptive spacious living accommodation.

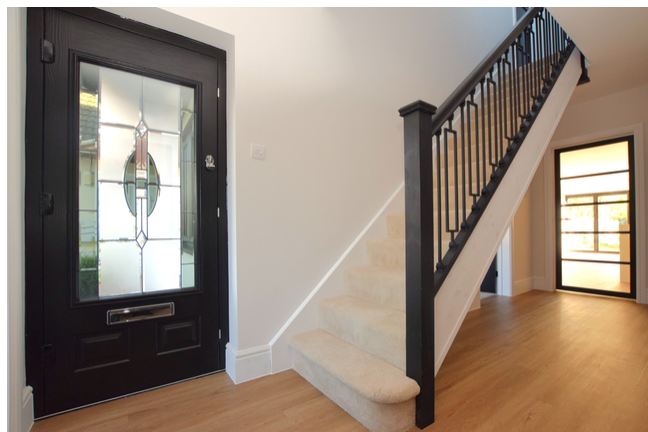
The property has being finished to a high specification and offers great open plan living which is a superb house for entertaining. On entering the property you are greeted with a spacious hallway with storage cloak cupboard and a ground cloakroom and W/C.

The real delight of this property is the amazing kitchen family room with bi-fold doors opening up to a large garden. The fully fitted kitchen and island has a ranged of fitted units with integrated appliances and feature display units.

There are two good size bedrooms to the ground floor and two to the first floor with the main bedroom having the advantage of an en-suite shower room which is addition to a four piece family bathroom.

Outside there is off road parking for 4 vehicles and the rear garden is mainly laid to lawn as is a generous size.

An internal viewing is highly recommended to fully appreciate the size and space on offer.



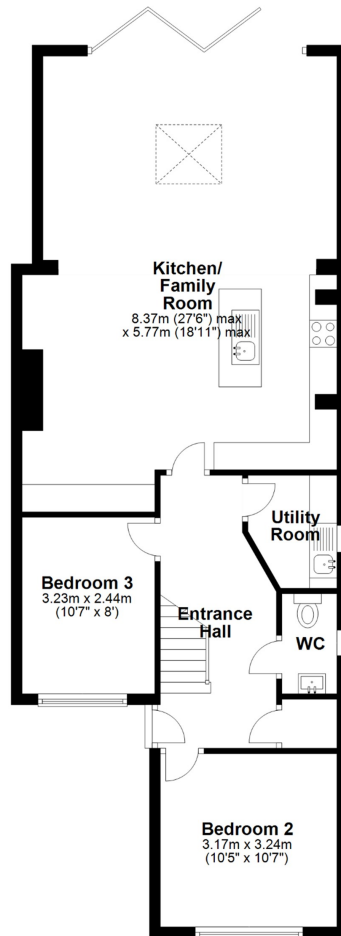




- Recently Refurbished Four Bedroom Semi Detached Property
- Close to Buttsbury and Mayflower Schools
- Quiet Location in a No Through Road Part Of Perry Street
- Benefit of a No Onward Chain
- Ground Floor W/C And Cloakroom
- Brand New Flooring and Carpets Throughout
- Amazing Kitchen Family Room With High Spec Fittings
- En-suite Shower Room And Four Piece Bathroom
- Plenty of Parking To the Front
- Large Rear Garden



### Ground Floor



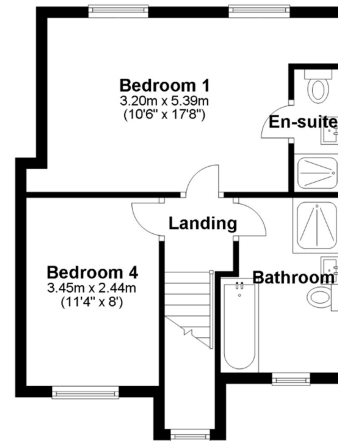
### APPROX INTERNAL FLOOR AREA 118 SQ M 1268 SQ FT

This plan is for layout guidance only and is  
**NOT TO SCALE**

Whilst every care is taken in the preparation  
of this plan, please check all dimensions,  
shapes & compass bearings before making  
any decisions reliant upon them.

Copyright The Property Specialists

### First Floor



Viewing strictly by appointment with The Property Specialists



Making Moving Home  
**Less Stressful**

135 High Street, Billericay,  
Essex, CM12 9AB  
**Tel: 01277 654446**  
sales@thepropertyspecialists.co.uk