



- Two Bedroom Ground Floor Apartment
- Ideal For First Time Buyers & Buy To Let Investors
- Private Garden
- No Onward Chain
- Allocated Parking Space
- Gated, Award Winning 'Old St Michaels' Development
- Gas Central Heating
- Short Walk To Town & Station
- Presented To An Excellent Standard Throughout
- Open-Plan Living Accommodation

5 St Jude Court, Old St Michaels Drive, Braintree, Essex. CM7 2AN.

A beautifully presented two-bedroom ground-floor apartment set within an award-winning gated development on Old St Michaels Drive. Featuring Georgian-style architecture, well-kept communal gardens, a private rear garden, and allocated parking. The light-filled accommodation includes an open-plan living/kitchen/dining area with French doors, two double bedrooms, and a family bathroom. Conveniently located within walking distance of Braintree town centre and the mainline railway station.



Property Details.

Accommodation

Entrance Door From Communal Hallway;

Open-Plan Kitchen/Living/Dining Area



18' 0" x 15' 6" (5.49m x 4.72m)

Bedroom One



11' 10" x 9' 1" (3.61m x 2.77m)

Bedroom Two



11' 6" x 8' 6" (3.51m x 2.59m)

Bathroom



Property Details.

Outside

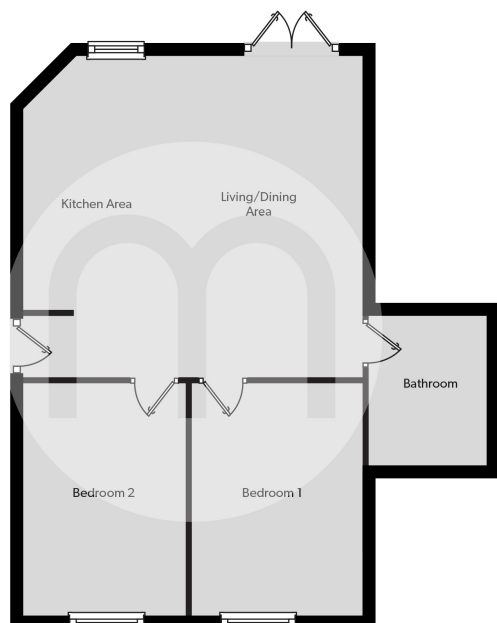
Private Garden



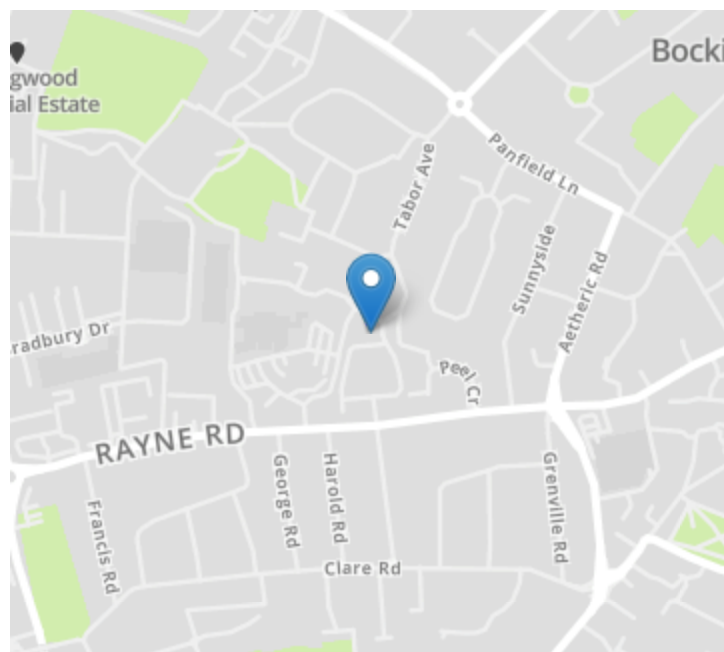
Allocated Parking Space

Property Details.

Floorplans



Location



Energy Ratings

We have not carried out a structural survey and the services, appliances and specific fittings have not been tested. All photographs, measurements, floor plans and distances referred to are given as a guide only and should not be relied upon for the purchase of carpets or any other fixtures or fittings. Gardens, roof terraces, balconies and communal gardens as well as tenure and lease details cannot have their accuracy guaranteed for intending purchasers. Lease details, service ground rent (where applicable) are given as a guide only and should be checked and confirmed by your solicitor prior to exchange of contracts.