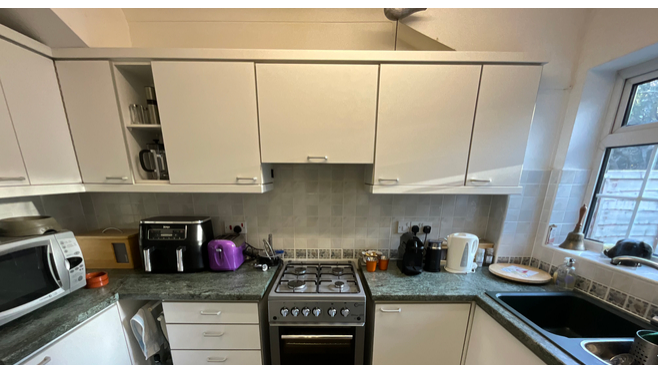




13 Chelsea Close, Bexhill-on-Sea, East Sussex,
TN40 1SJ

£299,950

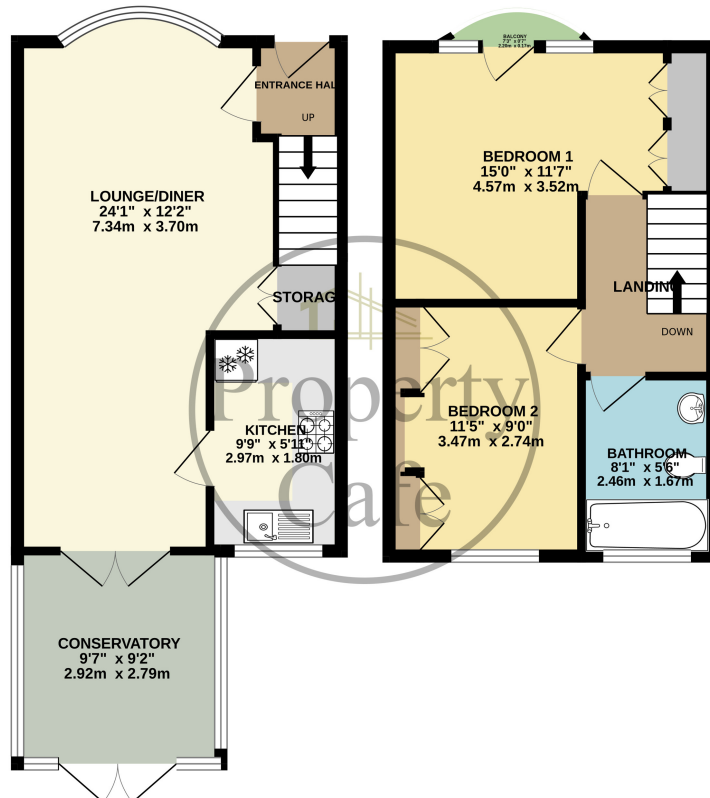


- Modern Mews Style Terrace House
- Dual Aspect Lounge-Diner with Fireplace
- UPVC Conservatory To The Rear
- Main Bedroom With 'Juliet Balcony'
- Good Size Second Bedroom
- Fitted Kitchen & Bathroom
- Small Private Patio Area
- Pleasant South Facing Communal Garden
- Quiet & Peaceful Mews Style Location
- Insulated & Fully Boarded Loft
- Communal Parking Area (Manor Road)
- Lovely Private Location (Pedestrian Access Only)
- Central Heated & Double Glazed



GROUND FLOOR
428 sq.ft. (39.8 sq.m.) approx.

1ST FLOOR
334 sq.ft. (31.0 sq.m.) approx.



TOTAL FLOOR AREA : 762 sq.ft. (70.8 sq.m.) approx.
 Whilst every attempt has been made to ensure the accuracy of the floorplan contained here, measurements of doors, windows, rooms and any other items are approximate and no responsibility is taken for any error, omission or mis-statement. This plan is for illustrative purposes only and should be used as such by any prospective purchaser. The services, systems and appliances shown have not been tested and no guarantee as to their operability or efficiency can be given.
 Made with Metropix ©2024

