



TOTAL FLOOR AREA: 1149 sq.ft. (106.7 sq.m.) approx.

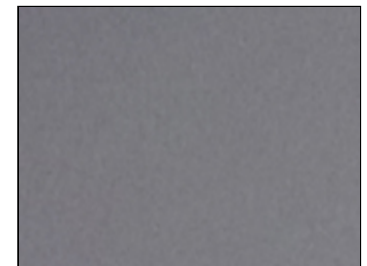
Whilst every attempt has been made to ensure the accuracy of the floorplan contained here, measurements of doors, windows, rooms and any other items are approximate and no responsibility is taken for any error, omission or mis-statement. This plan is for illustrative purposes only and should be used as such by any prospective purchaser. The services, systems and appliances shown have not been tested and no guarantee as to their operability or efficiency can be given.
Made with Mergix ©2020



Arisdale Avenue, South Ockendon

£420,000

- EXCLUSIVE BRAND NEW DEVELOPMENT 2021
- THREE DOUBLE BEDROOMS OVER THREE FLOORS
- FINISHED TO A HIGH SPECIFICATION
- TWO BATHROOMS & GROUND FLOOR WC
- 20' KITCHEN/ DINER WITH INTEGRATED APPLIANCES
- OFF STREET PARKING



Appointments to view and offers to purchase must be made through Patterson Hawthorn. These particulars are produced for guidance only and do not form any part of an offer or Contract. These particulars, whilst believed to be accurate are to be used for guidance only and do not constitute any part of an offer or contract. Intending purchasers should not rely on them as statements of representation of fact, but must satisfy themselves by inspection or otherwise as to their accuracy. No person in the employment of Patterson Hawthorn has the authority to make or give any representation or warranty in respect of the property. Patterson Hawthorn have not tested any services or appliances in the property, prospective purchasers should satisfy themselves with regard to the working order of these.

