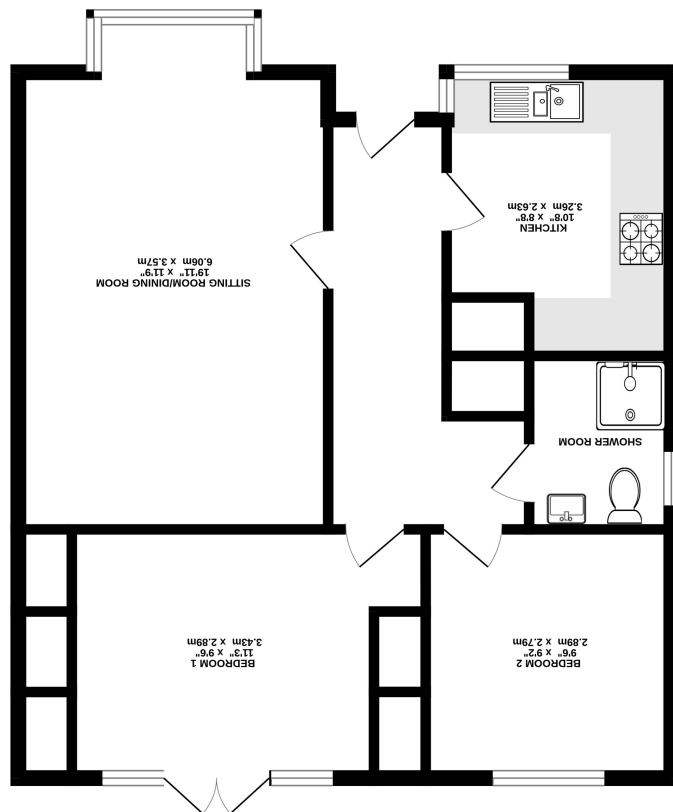
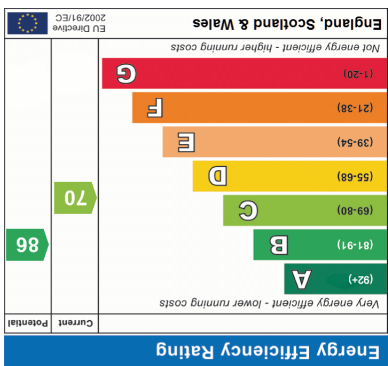


Measurements are taken to the internal face of the walls and are approximate and no responsibility is taken for any errors or omissions. The plan is intended as a guide only and should not be used as a basis for any prospective purchase. The services, systems and appliances shown have not been tested and no guarantee is made with respect to their operation or efficiency. All measurements are taken to the internal face of the walls.



656 sq. ft. (60.9 sq. m.) approx.





Description

A two double bedroom retirement bungalow for the over 55's with a 24 hour emergency call system. The property benefits from outside space, communal grounds and parking, is set just to the south of Farnham town.

Features - * Retirement bungalow for over 55's * 2 Double bedrooms* 19'11 Sitting/dining room* Modern, re-fitted kitchen

* Luxury shower room* 2 x private patio areas* Landscaped communal grounds* Gas central heating and double glazed windows* Resident and visitor parking * No onward chain and Probate awaited

Material Information - Service Charge including buildings insurance is £3,137 per annum for upkeep of communal areas and warden. Good mobile signal likely outside with all providers and superfast broadband available. Gas fired central heating. Built 1985. Beyond the patio area is communal grounds. First Port Retirement Properties Ltd runs the Management.



Directions

SAT NAV - GU9 8PG

Local Authority

Waverley
Band D

