



Lycett Place , London , W12 9DJ

**Cow & Co**  
LONDON



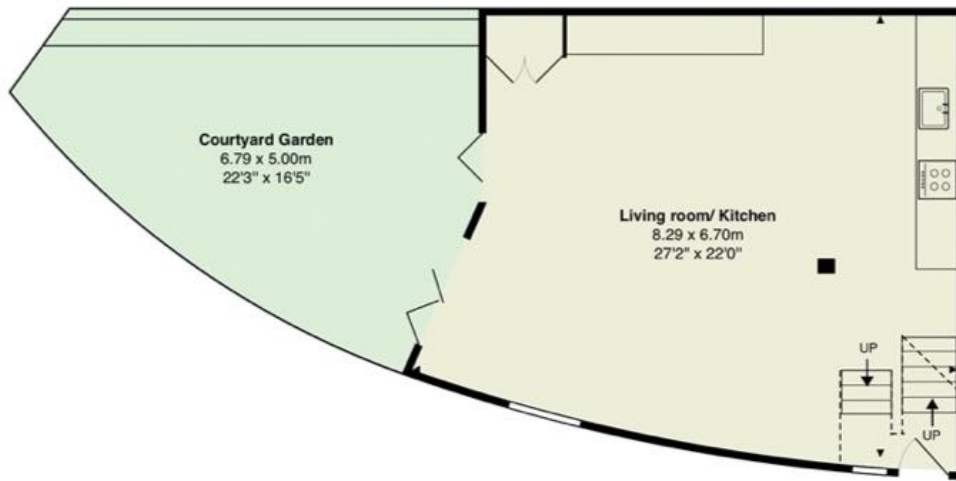
GUIDE PRICE OF £2500-£3000. A superb architecturally designed 2 double bedroom mews house in a secure gated development: Contemporary, simple, beautiful design and elegant use of materials complemented by bespoke architectural features, all flowing seamlessly from interior to the exterior landscaped garden. Birdsong, Lycett Place, is an architecturally designed, post-modernist, new build development, arranged into three beautiful two bedroom houses. House One is arranged over 2 floors, and comprises two double bedrooms, two bathrooms (one en-suite), sophisticated open plan living and a beautiful private courtyard garden, this is an incredibly unique opportunity to live in a beautiful house, on a quite residential cobbled mews, moments from the popular Askew Road.

Viewings are highly recommended.

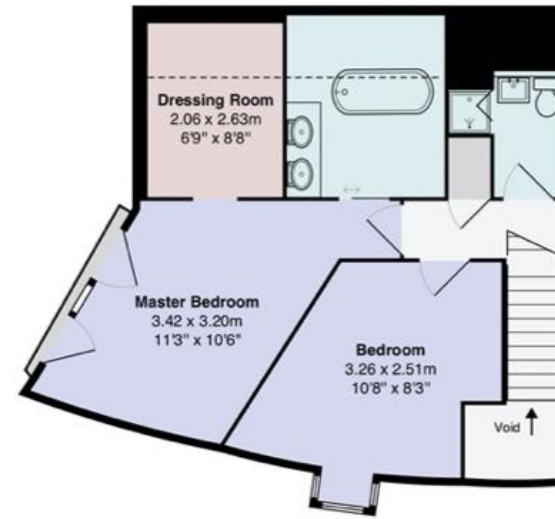


- Private cobbled courtyard mews house in a gated development
- Open plan reception room with fireplace
- Unique cantilevered solid concrete tread floating staircase
- Private courtyard garden with water feature
- Master bedroom with sumptuous en-suite bathroom
- Beautiful atrium/double height ceiling in hallway
- Demised, private cobbled courtyard/cul-de-sac mews

## Birdsong



Ground Floor



First Floor

Tel: 0208 065 0010  
Email: [thehub@cowandco-london.com](mailto:thehub@cowandco-london.com)  
Web: [cowandco-london.com](http://cowandco-london.com)

Agents note: All measurements are approximate and whilst every attempt has been made to ensure accuracy they are for general guidance only and must not be relied on. The fixture and fittings referred to have not been tested and therefore no guarantee can be given that they are in working order. Internal photographs are reproduced for general information and it must not be inferred that any item shown is included with the property.

**Cow & Co**  
LONDON