



Three Bedroom Terraced House  
Harvesters Close, Rainham, Gillingham, Kent, ME8 8PA

£315,000  
Freehold



# Harvesters Close, Rainham, Gillingham, Kent, ME8 8PA

£315,000

Freehold

## Description

Perfect First Home in Prime Rainham Location – Offered with no onward chain & Move-In Ready!

Step onto the property ladder with confidence in this fantastic three-bedroom terraced home, ideally located in the sought-after Rainham area. Whether you're a first-time buyer or looking for a stylish, low-maintenance home, this property has everything you need – space, comfort, and convenience – all wrapped up in a welcoming, move-in-ready package. As you enter, you're greeted by a handy porch with built-in storage, perfect for coats, shoes, and everyday essentials. Inside, the spacious cosy lounge offers a warm and inviting space to unwind or entertain friends. The modern kitchen/diner is sleek and well-equipped with plenty of storage and counter space – ideal for cooking up a storm or enjoying relaxed dinners. The kitchen flows seamlessly into a renovated conservatory complete with underfloor heating and self cleaning glass, making it a fantastic year-round space to relax or host. French doors flood the room with natural light and open out to the private, low-maintenance garden – perfect for summer BBQs or quiet evenings outdoors. Upstairs, you'll find three generously sized bedrooms, including two doubles with built-in wardrobes and a versatile third bedroom – ideal as a nursery, guest room, or home office. The family bathroom is fresh and functional, featuring a shower over the bath. Outside, the easy-care front and rear gardens offer great curb appeal and minimal upkeep, while the allocated parking space (en-bloc) is a real bonus. Location-wise, it doesn't get better – just a short walk to Rainham train station, local schools, and a vibrant high street with shops, cafes, and restaurants right on your doorstep.

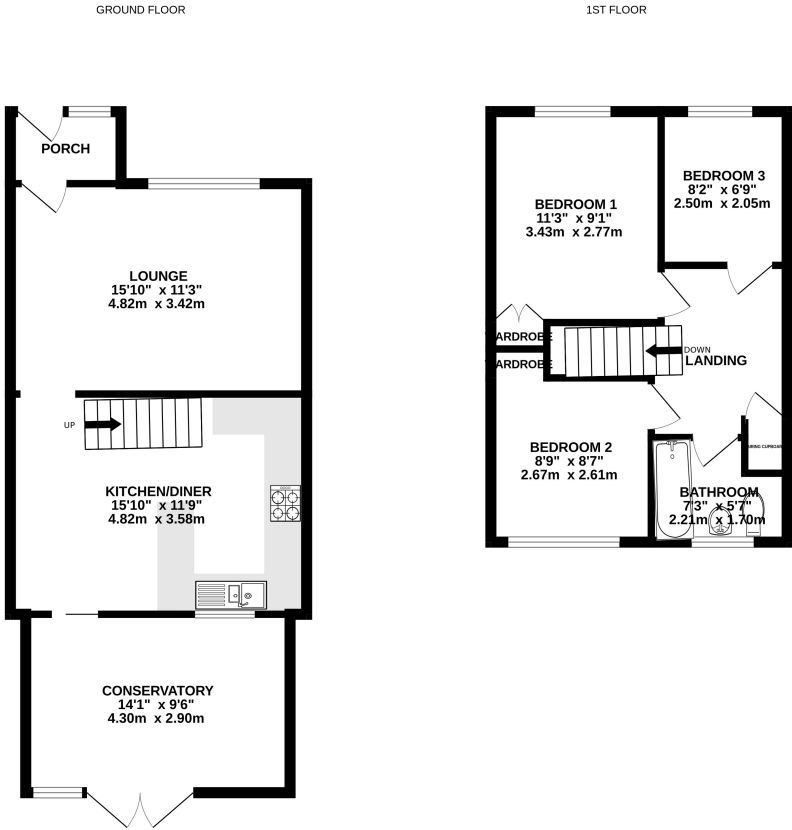
This home ticks all the boxes for first-time buyers, modern, practical, affordable, and in a fantastic location. Don't miss out – contact the Greyfox Sales Team in Rainham today and book your viewing!

## Key Features

- Three Bedroom Terraced Family Home
- Well Appointed Kitchen / Diner
- Fabulous Conservatory With Underfloor Heating & Self Cleaning Glass
- Popular Rainham Location, Close to Shops, Schools & Amenities
- Great Access To Motorway Links & Public Transport
- Low Maintenance Rear Garden Measuring Approx 25ft x 15ft
- Allocated Parking Space (En Bloc)
- Offered With No Onward Chain

## Local Area

Rainham in the Medway towns is located descending towards the banks of the river Medway, approximately 39 miles from London. The ancient Watling Street main road (A2) runs through the town with the M2 motorway on the southern edge with good links to the M25/M20. There are a good number of shops and facilities within the town, a mainline station and a selection of local schools including Rainham Mark Grammar School.

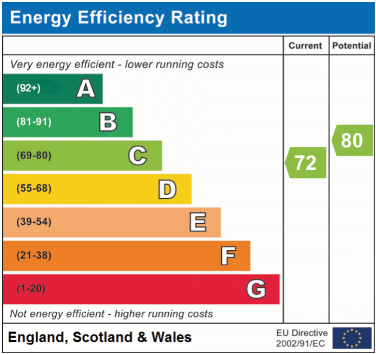
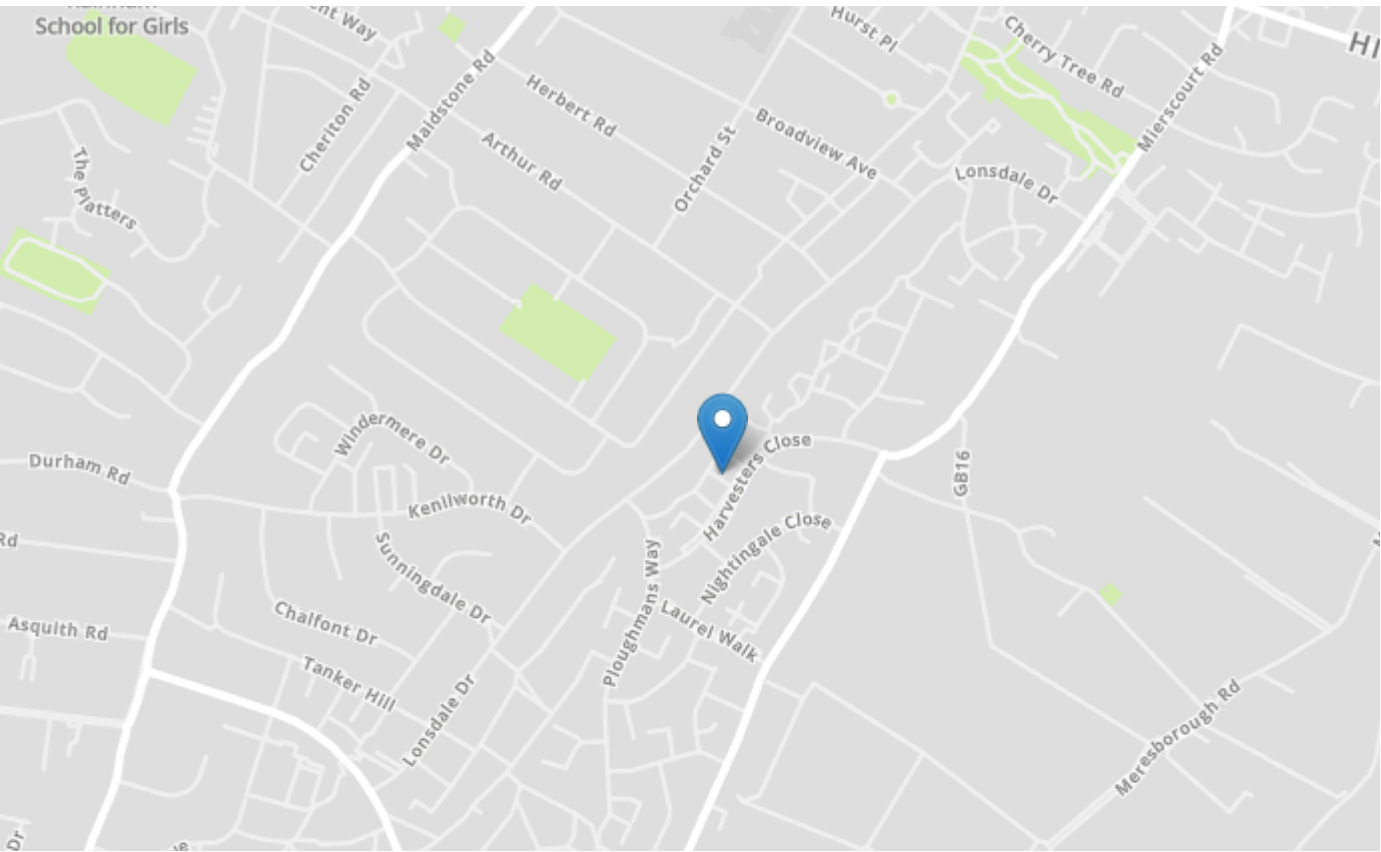


Whilst every attempt has been made to ensure the accuracy of the floorplan contained here, measurements of doors, windows, rooms and any other items are approximate and no responsibility is taken for any error, omission or mis-statement. This plan is for illustrative purposes only and should be used as such by any prospective purchaser. The services, systems and appliances shown have not been tested and no guarantee as to their operability or efficiency can be given. Made with MemoPro 6/2025



## Property Location

Harvesters Close, Rainham, Gillingham, Kent, ME8 8PA



Tenure	Freehold
Lease Term	N/A
Ground Rent	N/A
Service Charge	N/A
Local Authority	Medway
Council Tax	Band C

### Greyfox Walderslade

Unit 2, Thetford House  
 Walderslade Village Centre  
 Walderslade Road  
 Chatham  
 Kent  
 ME5 9LR  
 Tel: 01634 672227 Email:  
 walderslade@greyfox.co.uk

### Greyfox Rainham

67C High Street  
 Rainham  
 Kent  
 ME8 7HS  
 Tel: 01634 377737 Email:  
 rainham@greyfox.co.uk

#### Agent Notes

These particulars are prepared as a general guide to a broad description of the property and should not be relied upon as a statement or representation of fact and do not constitute part of an offer or contract. The seller does not make or give nor do our employees or Greyfox have authority to make or give any representation or warranty to the property. We have not carried out a structural survey and the services, appliances and specific fittings have not been tested. All photographs, measurements, floorplans and distances referred to are given as a guide only and should not be relied upon for the purchase of carpets or any other fixtures or fittings. Lease details, service charges and ground rent (where applicable) and council tax are given as a guide only and should be checked and confirmed by you on inspection and your solicitor prior to exchange of contracts. If there are any points of particular importance to you we will be pleased to check the information for you and to confirm that the property remains available. This is particularly important should you be travelling some distance to view and where statements have been made by us to the effect that the information has not been verified. The copyright of all details, photographs and floorplans remain exclusive to Greyfox. For details of our privacy policy and referral fee arrangements with any of our selected partner companies please visit <https://www.greyfox.co.uk/legal/privacy> and <https://www.greyfox.co.uk/referral-fees>.