

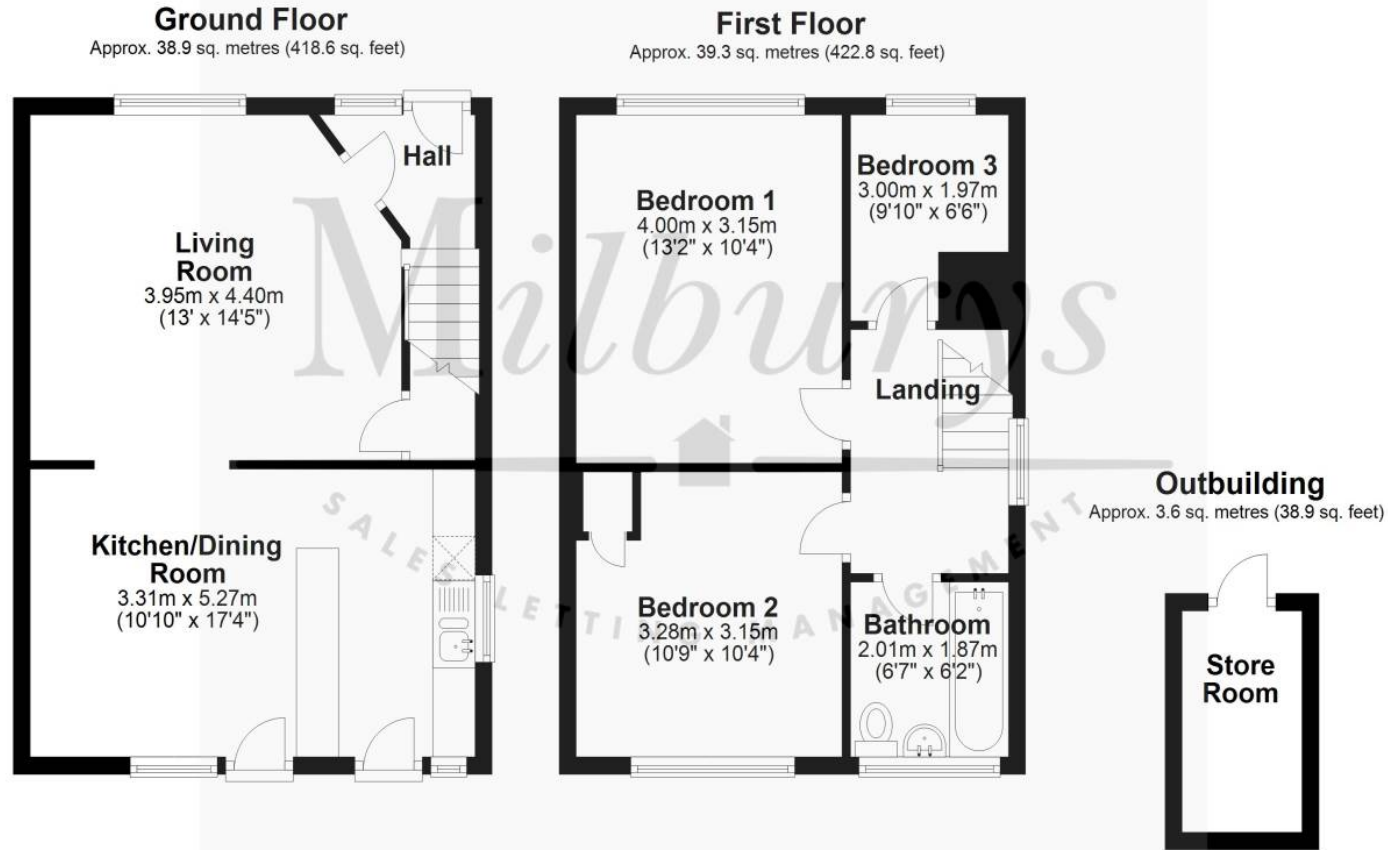
The logo for Milburys, featuring the name in a white serif font on a dark blue background.

SALES LETTING MANAGEMENT



17 Hyde Avenue, Thornbury, South Gloucestershire, BS35 1JA

£350,000



For Illustrative Purposes Only. Not to Scale.  
Plan produced using PlanUp.



# 17 Hyde Avenue, Thornbury, South Gloucestershire BS35 1JA

This smartly presented semi-detached home enjoys a fantastic cul-de-sac location on the desirable 'Castle' side of town. It has a lovely elevated front outlook over a wooded streamside walk, all very convenient for local primary and secondary schools. There is a sunny west-facing garden with patio behind – weather permitting! The house was recently refurbished and re-decorated. The accommodation includes the living room at the front and a very smart kitchen/dining room running across the rear. There are three bedrooms and the family bathroom upstairs. Practical benefits include Upvc double-glazing, gas central heating and off-street parking. And if you are hoping for a quick move, it is offered with NO ONWARD CHAIN!

## Situation

Thornbury is a thriving market town surrounded by beautiful open countryside, situated to the north of the City of Bristol and the M4/M5 interchange, with excellent commuting links via the motorway network and by rail from Bristol Parkway Station (Paddington/South Wales). The part-pedestrianised and historic High Street offers a wide variety of shops, cafes, pubs and restaurants. 'The Mall' at Cribbs Causeway is a short drive to the south, for those looking for a wider range of High Street brands. Local facilities and amenities include the leisure centre and swimming pool, the golf course, the library, plus open community spaces, parks and sports grounds/clubs – including tennis, cricket, rugby and football. The town is blessed with a number of primary and junior schools, plus The Castle secondary school ([www.thecastleschool.org.uk](http://www.thecastleschool.org.uk)) which is situated close to Thornbury's Tudor Castle, now a luxury hotel. The nearest independent school is Tockington Manor School.

## Property Highlights, Accommodation & Services

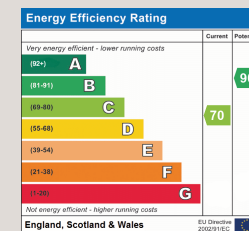
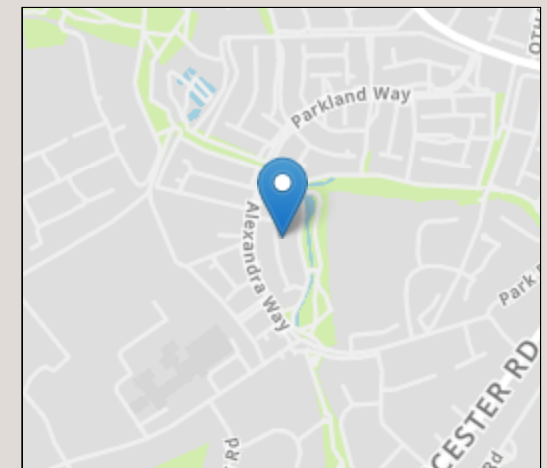
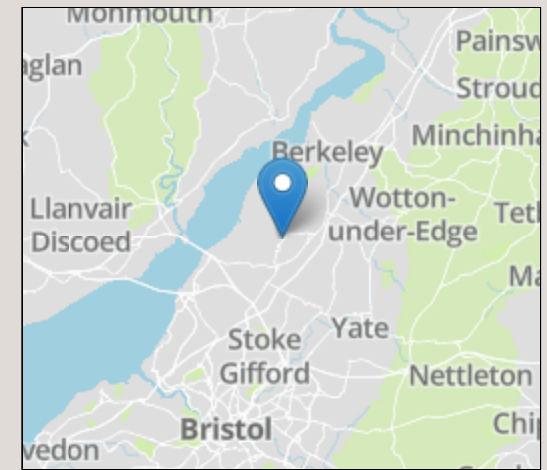
- Fantastic Cul-De-Sac Location On 'Castle' Side Of Town
- Elevated Outlook Over Wooded Streamside Walk
- Convenient Local Primary And Secondary Schools
- Sunny West-Facing Garden – Weather Permitting!
- Recently Refurbished And Redecorated
- Front-Facing Living Room
- Very Smart Kitchen Dining Room To Rear
- Three Bedrooms, Family Bathroom
- Upvc Double-Glazing, Gas Central Heating
- Off-Street Parking, Garden Shed

## Directions

**Local Authority & Council Tax** - South Gloucestershire - Tax Band C

**Tenure** - Freehold

**Contact & Viewing** - Email: [mil\\_thornburysales@milburys.co.uk](mailto:mil_thornburysales@milburys.co.uk) Tel: 01454 417336



IMPORTANT NOTICE Milburys Estate Agents Ltd, their clients and any joint agents give notice that they have not tested any apparatus, equipment, fixtures, fittings, heating systems, drains or services and so cannot verify they are in working order or fit for their purpose. Interested parties are advised to obtain verification from their surveyor or relevant contractor. Statements pertaining to tenure are also given in good faith and should be verified by your legal representative. Digital images may, on occasion, include the use of a wide angle lens. Please ask if you have any queries about any of the images shown, prior to viewing. Where provided, floor plans are shown purely as an indication of layout. They are not scale drawings and should not be treated as such. Complete listings and full details of all our properties (both for sale and to let) are available at [www.milburys.co.uk](http://www.milburys.co.uk)





[www.milburys.co.uk](http://www.milburys.co.uk)