



Clare Street,
Basford



OneAgency

01782 970222

hello@oneagencygroup.co.uk



£110,000

Mid terrace house situated in a popular location and location in a convenient location for Newcastle-under Lyme town centre, Royal Stoke university hospital and Hanley city centre. The property is offered with no chain involvement.





Sitting Room

Double glazed window to the front, radiator, laminate floor.

Living Room

Double glazed window to the rear, radiator, laminate floor.

Kitchen

Fitted kitchen units, wall mounted boiler, double glazed windows and door to side, sink and drainer unit with tap.

Landing

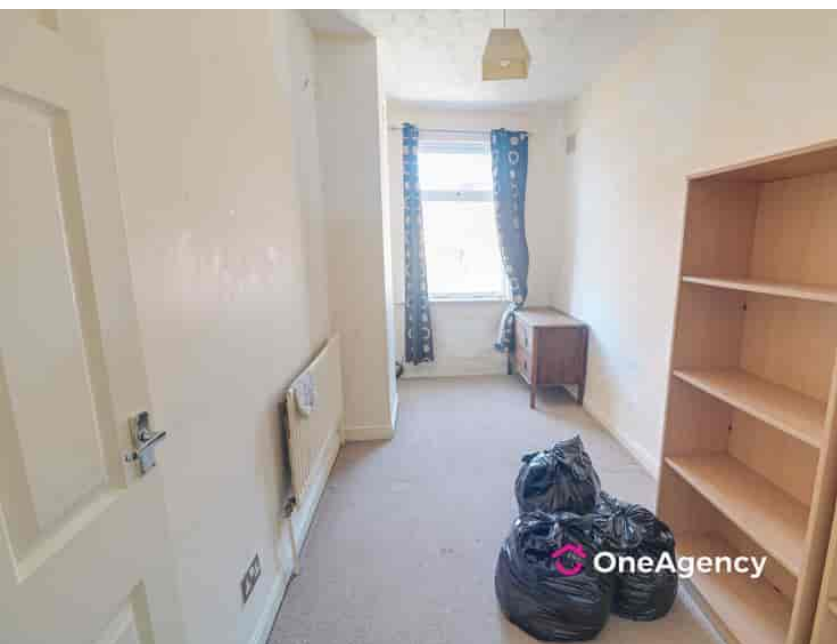
Access to loft.

Outside

Rear Yard.

Agents Notes

Stoke-on-Trent Council Tax Band A



Bedroom One

Double glazed window to the front, radiator, built in storage area.

Bedroom Two

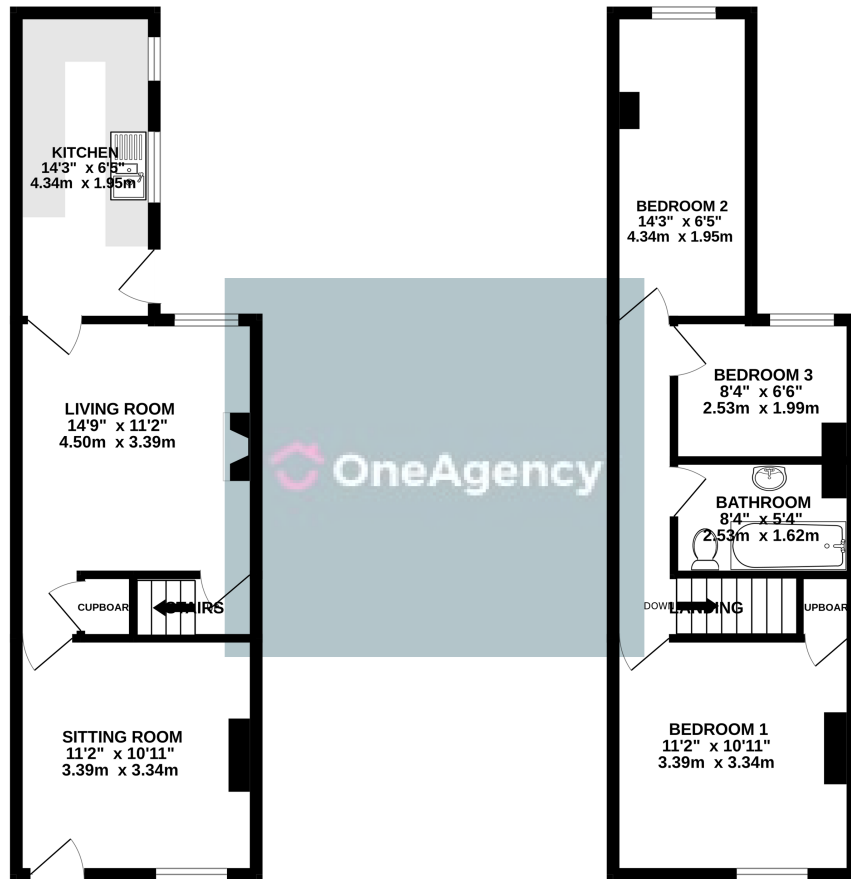
Double glazed window to the rear, radiator.

Bedroom Three

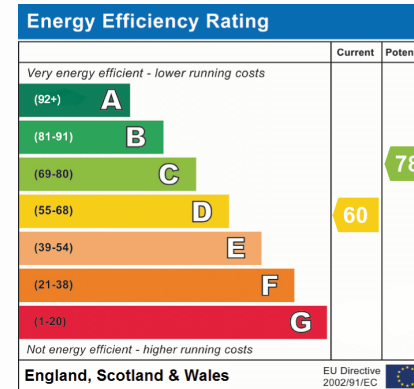
Double glazed window to rear, radiator.

Bathroom

Bathroom suite comprising of panelled bath, hand wash basin and WC. Radiator.



Whilst every attempt has been made to ensure the accuracy of the floorplan contained here, measurements of doors, windows, rooms and any other items are approximate and no responsibility is taken for any error, omission or mis-statement. This plan is for illustrative purposes only and should be used as such by any prospective purchaser. The services, systems and appliances shown have not been tested and no guarantee as to their operability or efficiency can be given.
Made with Metropix ©2025



OneAgency, 9 & 10 Ridge House Drive, Festival Park, Stoke-on-Trent, ST1 5SJ

01782 970222

hello@oneagencygroup.co.uk

Every attempt has been made to ensure accuracy, however, all measurements are approximate and for illustrative purposes only. **Not to scale.**

In accordance with The Consumer Protection from Unfair Trading Regulations 2008 the following particulars have been prepared in good faith and they are not intended to constitute part of an offer or contract. We have not carried out a structural survey and the services, appliances and specific fittings have not been tested. All photographs, measurements, floor plans and distances referred to are given as a guide only and should not be relied upon for the purchase of carpets or any other fixtures and fittings. Lease details, service charges and ground rent (where applicable) are given as a guide only and should be checked and confirmed by your Solicitor prior to exchange of contracts.