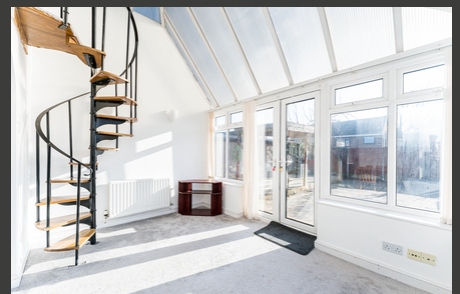


Parksway, Woolston, Warrington, £250,000

Offers in excess of



This property is a three-bedroom bungalow that offers comfortable living space for families or individuals. The bungalow includes two double bedrooms on the ground floor, which provide easy access for those who may have difficulty with stairs. There are also two bathrooms, which will be convenient for a family or guests.



x 3



x 2

See more of this house at [ashtons.net](https://www.ashtons.net)

