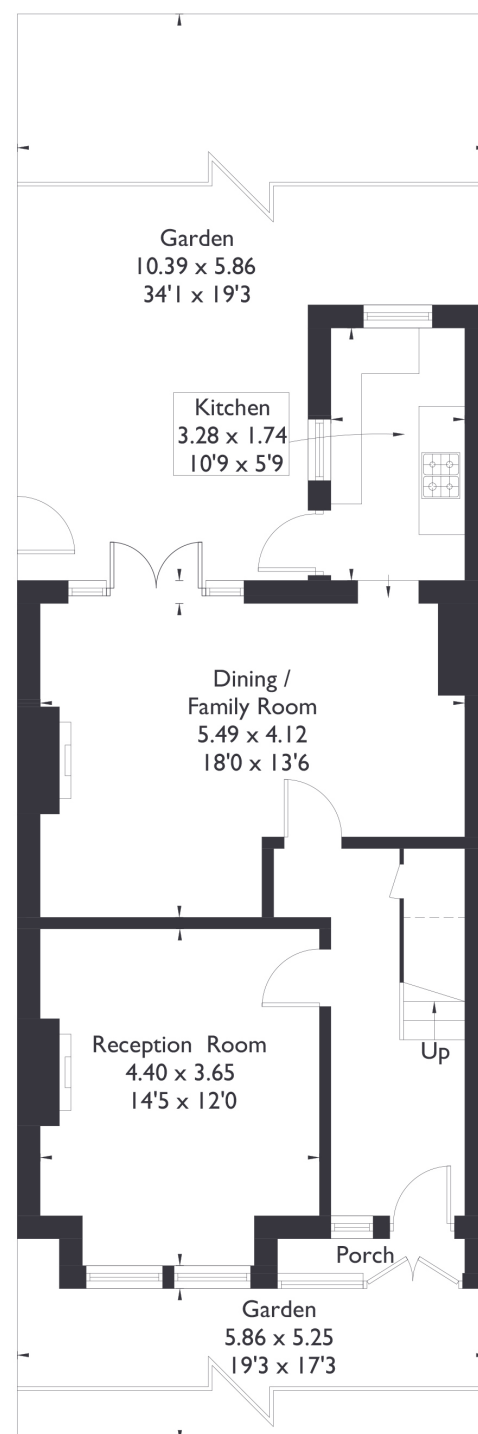
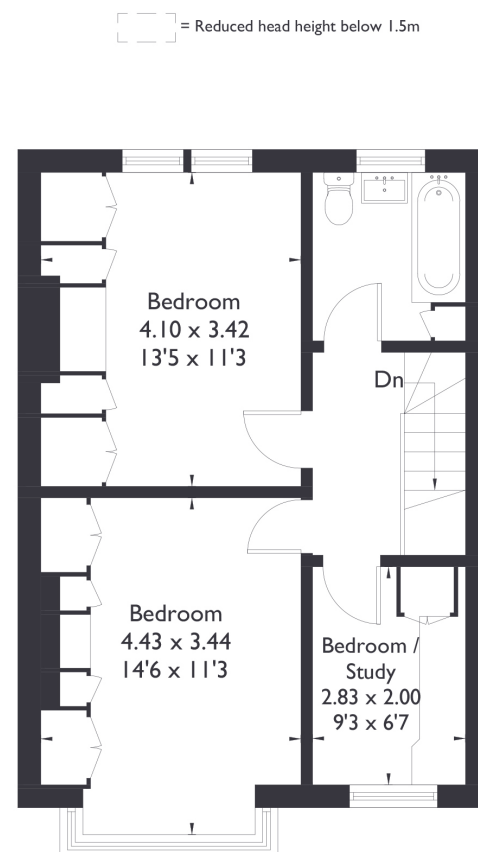


Raymond Avenue, W13

Approximate Floor Area = 100.5 sq m / 1082 sq ft



Ground Floor



First Floor



3 BEDROOM HOUSE

Raymond Avenue, W13

£975,000

Welcome to this three bedroom, one bathroom home in the heart of Northfields. Lovingly maintained, this property offers a wealth of potential with opportunities to extend both outward and upward into the loft. The ground floor features two generously sized reception rooms, one of which opens onto a beautifully sunlit garden, perfect for relaxing or entertaining. A separate kitchen completes the ground floor layout.

FEATURES

- Three Bedrooms
- One Bathroom
- Separate Kitchen/Dining
- Boston Manor Station/
Northfields Station
- Fielding Primary School/
Elthorne Park High School
- Northfields Amenities
- EPC Rating E



3 BEDROOM HOUSE

Raymond Avenue, W13

Upstairs, you'll find two spacious double bedrooms, a cosy third bedroom, and a family bathroom

Ideally located, this home is within easy reach of Boston Manor Station and Northfields Station, providing excellent transport links. For outdoor enthusiasts, Elthorne Park is nearby, and families will appreciate the property being within the catchment area for Elthorne Park High School and Fielding Primary School. EPC Rating E.

