

63 St Johns Road, Petts Wood, Orpington, Kent, BR5 1HT

## Property Images

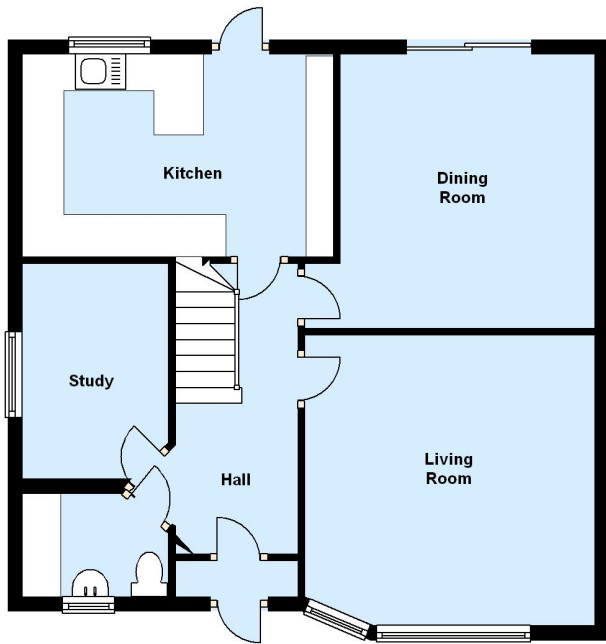






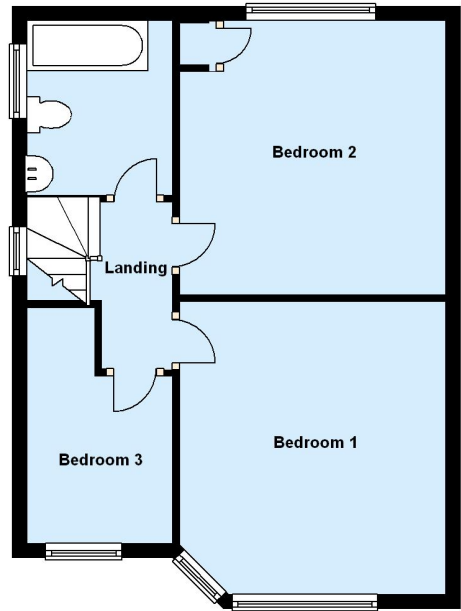
**Ground Floor**

Approx. 58.4 sq. metres (628.6 sq. feet)



**First Floor**

Approx. 42.9 sq. metres (461.2 sq. feet)



Total area: approx. 101.3 sq. metres (1089.9 sq. feet)