

# QUEEN ANNE STREET W1G







## Description

A delightful two-bedroom apartment set on the third floor and situated in a prime position near Marylebone Village.

Featuring a bright and spacious reception room, separate modern kitchen, large principal bedroom, second double bedroom, family bathroom and guest cloakroom.



Milford House is a purpose-built block with modern passenger lifts and porter and is ideally located on the corner of Queen Anne Street and Chandos Street, near the boutique shops and restaurants of Marylebone High Street, Oxford Street and the green spaces of Regent's Park and Cavendish Square.





## Description

There are many excellent transport links nearby such as Bond Street (Central, Jubilee and Elizabeth lines) and Oxford Circus (Bakerloo, Central and Victoria lines) underground stations.



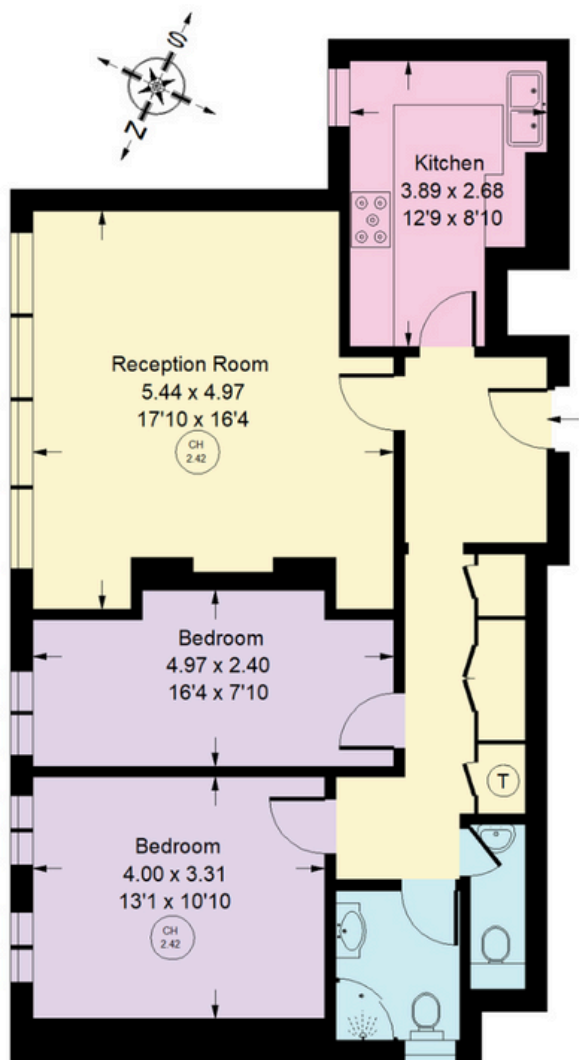






# Milford House, W1

Approx. Gross Internal Area  
82.9 sq m / 892 sq ft

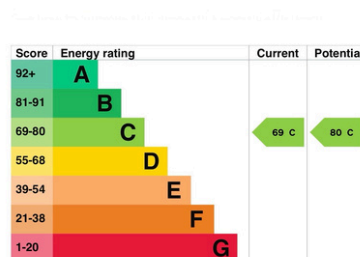


Third Floor

Whilst every attempt has been made to ensure the accuracy of the floor plan, measurements are approximate and not to scale.  
No guarantee is given on the total square footage of the property quoted on the plan. Figures given are for guidance.  
Plan is for illustration purposes only, not to be used for valuations.

## Energy rating and score

This property's energy rating is C. It has the potential to be C.



The graph shows this property's current and potential energy rating.

Properties get a rating from A (best) to G (worst) and a score. The better the rating and score, the lower your energy bills are likely to be.

For properties in England and Wales:

- the average energy rating is D
- the average energy score is 60

## SUMMARY

Apartment  
Third floor  
Purpose built block  
Prime location in Marylebone

Leasehold 114 years remaining  
Approx. 892 sq ft (82.9 sq m)  
2 Bedrooms  
1 Bathroom  
Guest W/C  
Wood floors  
Separate modern kitchen  
Passenger Lifts  
Porter

Service Charge approx £10k p.a.

Guide Price: **£1,625,000**  
(subject to contract)