



Mountway, Potters Bar, Hertfordshire, EN6

£1,100,000

- **DETACHED FAMILY HOME**
- **WIDE FRONTAGE**
- **DOWNSTAIRS SHOWER ROOM**
- **SOUTH FACING PRIVATE GARDEN**
- **PREMIER ROAD IN POTTERS BAR**
- **FOUR DOUBLE BEDROOMS**
- **STUDY / DOWNSTAIRS BEDROOM**
- **OFF STREET PARKING FOR SEVERAL CARS**

Mountway, Potters Bar, Hertfordshire, . EN6

£1,100,000 Freehold

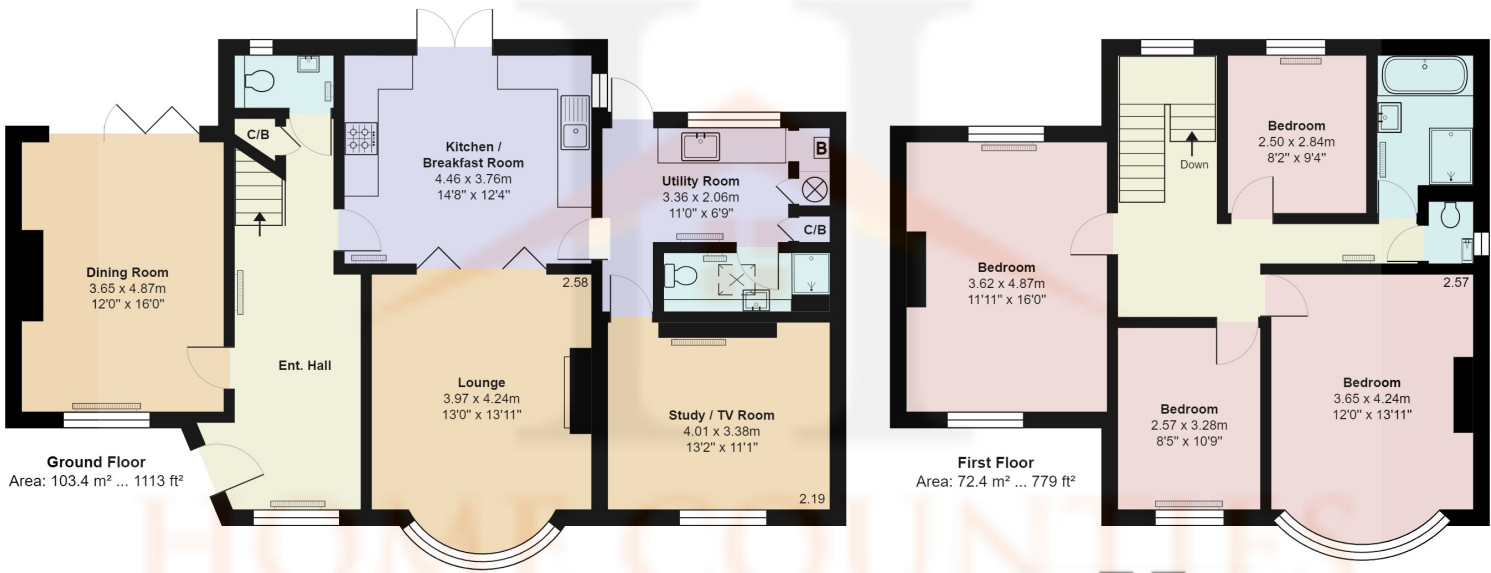
This substantial four double-bedroom detached family home is situated in one of Potters Bar's premier roads. The property benefits from a spacious entrance hall with a guest cloakroom. To the left of the hall a dining room, a kitchen/breakfast room to the rear, and a front lounge - bi-folding doors between these rooms give the option of through lounge or separate rooms.

The kitchen leads to a utility room, downstairs shower room with WC, and a study/tv/bedroom room to the front. This part of the house has separate access to the garden, and could be self-contained accommodation.

The first floor consists of a spacious landing, four double bedrooms, a family bathroom and a separate WC. There is a loft, with internal folding ladder for easy access.

Externally, the home has ample off-street parking to the front. A side entrance leads to a professionally-designed and well-stocked south-west facing garden, which wraps round the home.

There is a raised yellow balau wood decked area accessed from the utility, kitchen and dining rooms, The garden also houses a summer house and garden shed.



Mountway, Hertfordshire EN6
Total Area: 175.8 m² ... 1892 ft²
All measurements are approximate and for display purposes only

