



Rodney Road

 Nick  
**GRIFFITH**  
ESTATE AGENTS

# Rodney Road

## Cheltenham, GL50 1JJ

### £595,000 Freehold

A modern 3 bedroom town house with 2 balconies and a courtyard garden, offered for sale with no onward chain.

NO ONWARD CHAIN • reception hall • kitchen/dining room • utility room • cloakroom • first floor living room • kitchenette • 3 double bedrooms • 3 bath/shower rooms • 2 balconies • courtyard garden • gas central heating & double glazing • permit parking • wheelie bin store

#### Description

Built approx. 17 years ago, this contemporary town house offers generous and versatile living space arranged over 4 floors. The very well presented accommodation, which could do with some updating, includes a reception hall; a magnificent kitchen/dining room with granite worktops, integrated appliances and doors to the rear garden; separate utility room; and a ground floor cloakroom. Upstairs, there is an impressive living room with bi-folding doors giving direct access to an enclosed sun terrace. Just off the living room is a small kitchenette (formerly used as a home office). On the second and third floors, there are 3 double bedrooms and 3 bath/shower rooms (2 en suite). The master also enjoys a further enclosed sun terrace. The property also benefits from a small town garden, gas central heating, double glazing, and is offered for sale with no onward chain.

#### Further Information:

**Local Authority** Cheltenham Borough Council. **Tax Band** C. **Electricity** Mains. **Water** Mains. **Sewerage** Mains. **Heating** Gas Central Heating.

**Broadband** Not connected to the property. Purchasers should carry out their own investigations regarding the suitability of these services.





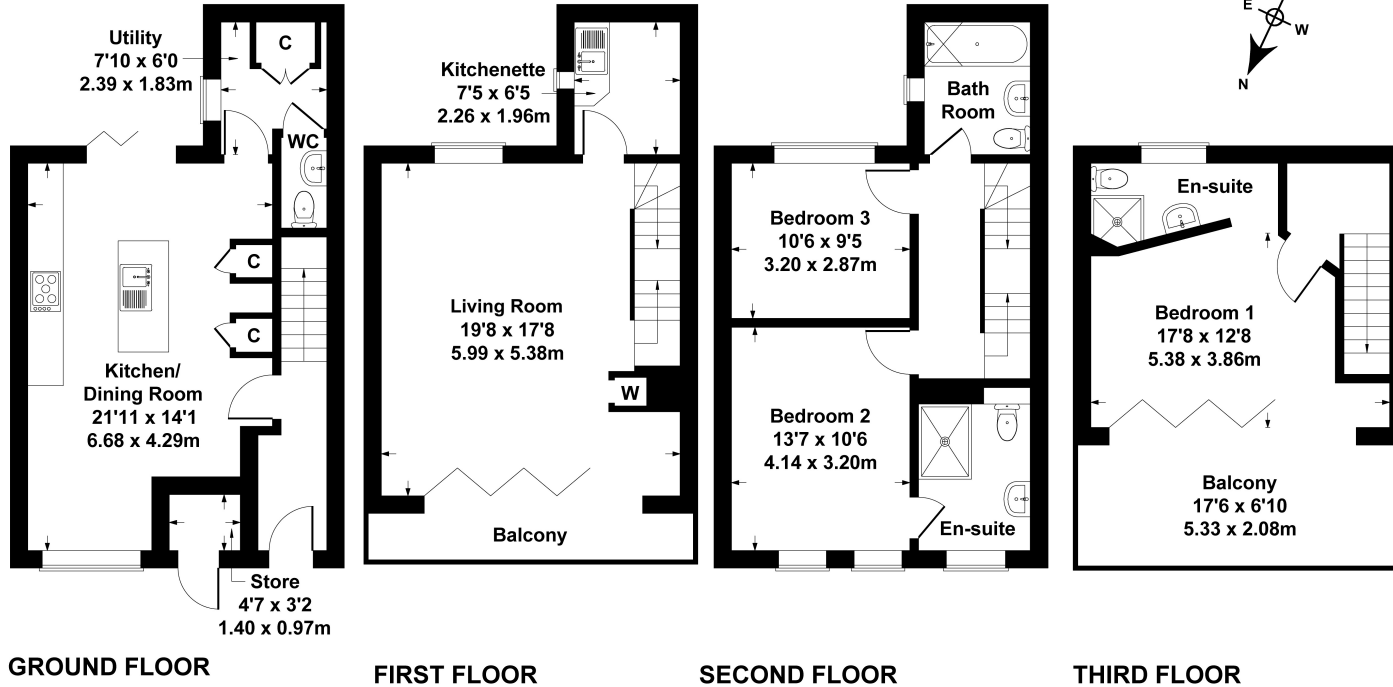


### Situation

Rodney Road is situated just a short walk from the town centre, Montpellier, Sandford Park, the hospital, and the Lido. Cheltenham is a vibrant Regency town, best known for its beautiful architecture, excellent shopping, and horse racing at the world famous Prestbury Park Racecourse. Cheltenham also plays host to the music, jazz, science, and literature festivals currently held in Imperial Gardens.

## 26 Rodney Rd

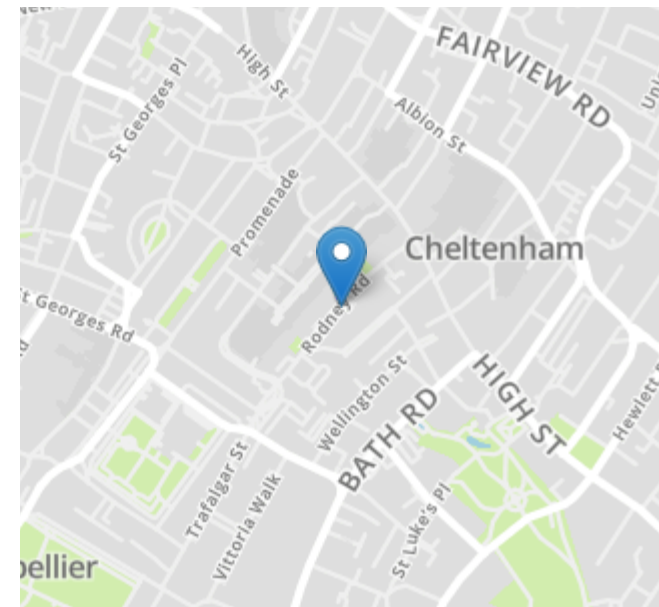
Approximate Gross Internal Area  
House = 1433 sq ft - 133 sq m  
Store = 13 sq ft - 1 sq m  
Total = 1446 sq ft - 134 sq m



### SKETCH PLAN FOR ILLUSTRATIVE PURPOSES ONLY

All measurements walls, doors, windows, fittings and appliances, their sizes and locations, are approximate only. They cannot be regarded as being a representation by the seller, nor their agent.

Produced by Potterplans Ltd. 2025



| Energy Efficiency Rating                    |                         |           |
|---|-------------------------|-----------|
|   | Current                 | Potential |
| Very energy efficient - lower running costs |                         |           |
| (92+) <b>A</b>                              |                         |           |
| (81-91) <b>B</b>                            |                         | 86        |
| (69-80) <b>C</b>                            | 78                      |           |
| (55-68) <b>D</b>                            |                         |           |
| (39-54) <b>E</b>                            |                         |           |
| (21-38) <b>F</b>                            |                         |           |
| (1-20) <b>G</b>                             |                         |           |
| Not energy efficient - higher running costs |                         |           |
| England, Scotland & Wales                   | EU Directive 2002/91/EC |           |

Nick Griffith Estate Agents for themselves and for the vendors or lessors of this property whose agents they are, give notice that: (i) The particulars are produced in good faith, are set out as a general guide only and do not constitute part of any contract. (ii) No person in the employment of Nick Griffith Estate Agents has any authority to make any representation or warranty whatever in relation to this property.