



34 Woodpecker Mead, Lower Stondon, Henlow, Bedfordshire, SG16 6FU

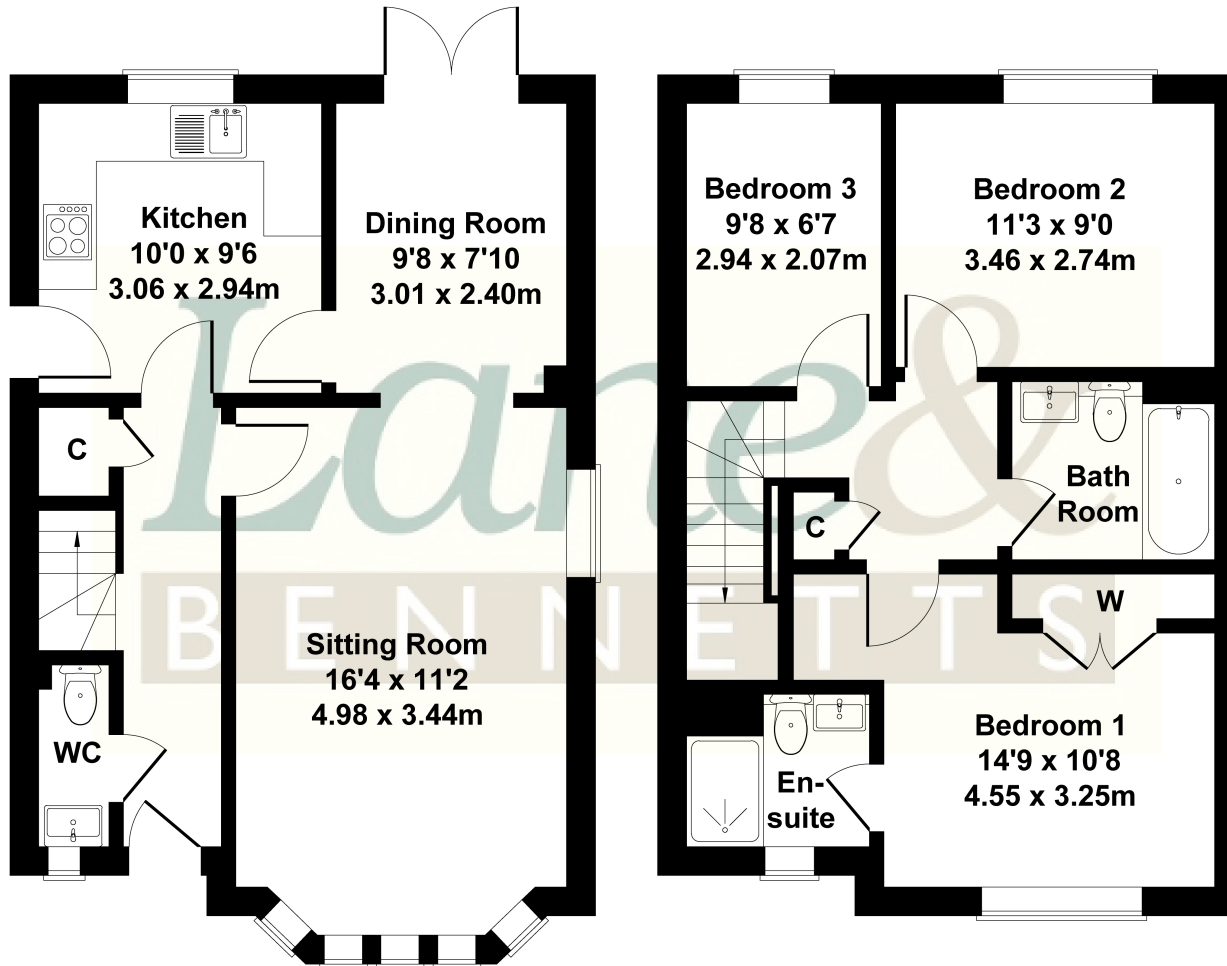
£450,000

NO CHAIN - DETACHED FAMILY HOME in small cul-de-sac overlooking a small park. Spacious sitting room with bay window to front, dining room and kitchen overlooking the enclosed rear garden. Upstairs are three bedrooms, Bedroom 1 has built in wardrobes and en-suite plus a family bathroom. Off road parking is provided by a garage and driveway. Outside is also a useful LOG CABIN with light and power.



34 Woodpecker Mead Lower Stondon

Approximate Gross Internal Area
958 sq ft - 89 sq m



GROUND FLOOR

FIRST FLOOR

Not to Scale. Produced by The Plan Portal 2024
For Illustrative Purposes Only.

- NO CHAIN
- DETACHED FAMILY HOME
- SMALL CUL-DE-SAC LOCATION OVERLOOKING PARK
- THIS PROPERTY IS A PART EXCHANGE SO NO CHAIN
- SPACIOUS SITTING ROOM
- FITTED KITCHEN + DINING ROOM OVERLOOKING GARDEN
- THREE BEDROOMS + 2 BATHROOMS
- GARAGE + 2 PARKING SPACES
- ENCLOSED REAR GARDEN
- LOG CABIN WITH LIGHT + POWER

