



High Street, Potters Bar, Hertfordshire, EN6

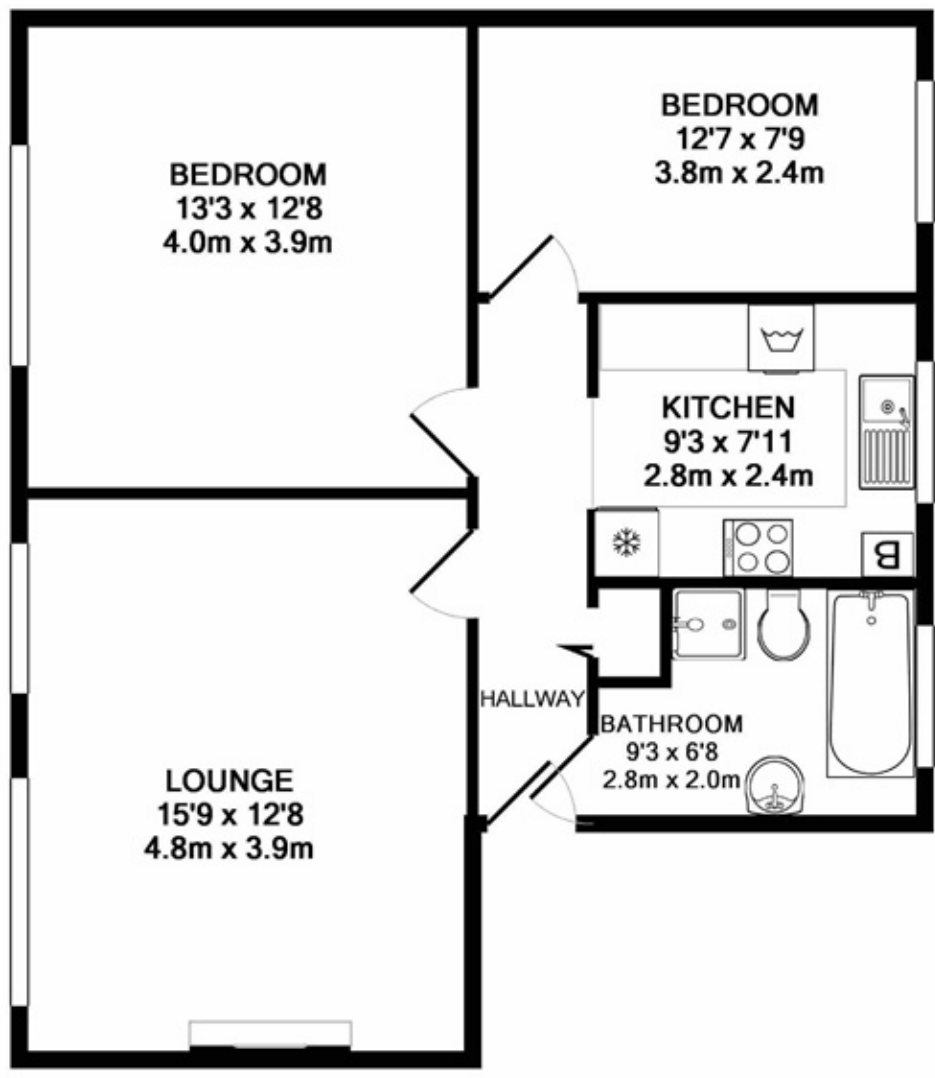
£1,250 pcm

- **Two Double Bedrooms**
- **Larger Than Average**
- **Walking Distance to Potters Bar Mainline Station**
- **Available from 17th December 2021**
- **Ground Floor Flat**
- **Great Location**
- **£1,250pcm**

High Street, Potters Bar, Hertfordshire, . EN6

£1,250 pcm

This larger than average TWO DOUBLE BEDROOM ground floor flat is ideally located on Potters Bar High Street, close to shops, and walking distance to Potters Bar Mainline Station. The property benefits from large lounge diner, two double bedrooms, separate kitchen and family bathroom.



TOTAL APPROX. FLOOR AREA 648 SQ FT (60.2 SQ M)

An attempt has been made to ensure the accuracy of the floor plans, rooms and any other items are approximate and not to be taken as a statement. This plan is for illustrative purposes only. The services, systems and appliances shown are for illustrative purposes only and do not represent the actual services, systems and appliances installed. The services, systems and appliances shown as to their operability or efficiency can vary. Made with Metropix ©2017

Energy Efficiency Rating		Current	Potential
Very energy efficient - lower running costs			
(92 to 100) A			
(81 to 91) B			
(69 to 80) C			
(55 to 68) D		68	78
(39 to 54) E			
(21 to 38) F			
(1 to 20) G			
Not energy efficient - higher running costs			
England, Wales & N.Ireland		EU Directive 2002/91/EC	

