



18 Orchard Street
Galston, KA4 8ER
P.O.A.

GREIG
Residential



Orchard Street

Galston, KA4 8ER

Proudly presenting to the market this traditional one bedroom ground floor flat located within the heart of Galston offering convenient ease of access to all local amenities, schooling and transport links. Boasting spacious all on the level accommodation and further benefitting from generous private rear gardens, this ground floor flat offers a wealth of potential and is sure to appeal to a wide range of buyers.



Livingroom

3.17m x 3.4m (10' 5" x 11' 2") Spacious main apartments featuring neutral decor, vinyl flooring, double glazed window to the front and gives access to the bedroom and kitchen.

Kitchen

3.13m x 3.22m (10' 3" x 10' 7") Fully fitted kitchen offering an array of white gloss base units with contrasting wood effect work surfaces, integrated oven and gas hob, cooker hood, plumb space for washing machine and under counter fridge freezer, stainless steel sink and drainer, vinyl flooring and double glazed UPVC door to rear garden.

Bedroom

2.8m x 3.03m (9' 2" x 9' 11") Double bedroom featuring neutral decor, storage cupboard, laminate flooring and double glazed window to the front.

Bathroom

1.78m x 2.88m (5' 10" x 9' 5") Completing this property is the fitted three piece bathroom suite comprising of WC, wash hand basin, mains fed shower over bath, chrome heated towel rail, neutral decor, wet wall finish around the bath, tiled finish around the wash hand basin and vinyl flooring.

External

This property further benefits from a private rear garden with ease of maintenance in mind as its laid to chip.

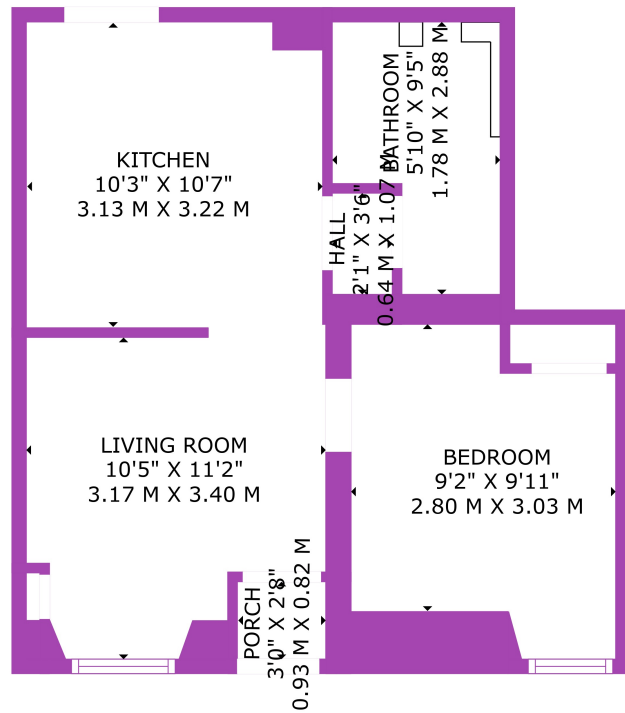
Council Tax Band

Band A

External

THESE PARTICULARS ARE ISSUED IN GOOD FAITH BUT DO NOT CONSTITUTE REPRESENTATIONS OF FACT OR FORM PART OF ANY OFFER OR CONTRACT. THE MATTERS REFERRED TO IN THESE PARTICULARS SHOULD BE INDEPENDENTLY VERIFIED BY PROSPECTIVE BUYERS. NEITHER GREIG RESIDENTIAL NOR ANY OF ITS EMPLOYEES OR AGENTS HAS ANY AUTHORITY TO MAKE OR GIVE ANY REPRESENTATION OR WARRANTY WHATEVER IN RELATION TO THIS PROPERTY. ALL ROOM DIMENSIONS ARE AT WIDEST POINTS APPROX.





TOTAL: 392 sq. ft, 36 m²

FLOOR 1: 392 sq. ft, 36 m²

EXCLUDED AREAS: PORCH: 8 sq. ft, 1 m², WALLS: 53 sq. ft, 5 m²

SIZES AND DIMENSIONS ARE APPROXIMATE. ACTUAL MAY VARY. © FOUR WALLS MEDIA



Greig Residential
18 Henrietta Street, East Ayrshire
KA4 8HQ
01563 501350
info@greigresidential.co.uk