

24 Sidney Street

Folkestone
CT19 6HG

£240,000 FREEHOLD

DRAFT DETAILS... FOR SALE WITH BURNAP + ABEL... Burnap + Abel are delighted to offer this three bedroom mid terraced house, situated within walking distance of Folkestone Central Train Station and the Town Centre. The property is in our opinion good condition and would make an ideal first time buy or buy to let investment. The accommodation comprises of a large lounge, dining room, kitchen, family bathroom and three bedrooms. Additional benefits include double glazing and gas central heating. For your chance to view call sole agent Burnap + Abel now on 01303 258590.



Lounge

13' 6" x 11' 0" (4.11m x 3.35m) A large lounge with wood flooring double glazed bay style window, gas radiator and opening to dining room

Dining Room

13' 7" x 10' 9" (4.14m x 3.28m) A large dining room with wood flooring, gas radiator and double glazed patio doors leading to garden

Kitchen

10' 6" x 7' 1" (3.20m x 2.16m) A galley style kitchen with a mix of wall and base units, roll edge work surfaces, tiled flooring, integral oven and grill with extractor overhead, four ring gas hob, tiled splash back and patio door leading to garden

Bathroom

6' 0" x 6' 0" (1.83m x 1.83m) A three piece family bathroom suite comprising of a low level W.C, wash hand basin and panelled bath with shower overhead, tiled splash back and double glazed window

Bedroom

13' 7" x 11' 1" (4.14m x 3.38m) A large double bedroom with wood flooring, gas radiator and two double glazed windows

Bedroom

10' 9" x 8' 7" (3.28m x 2.62m) A double bedroom with wood flooring, double glazed window and radiator

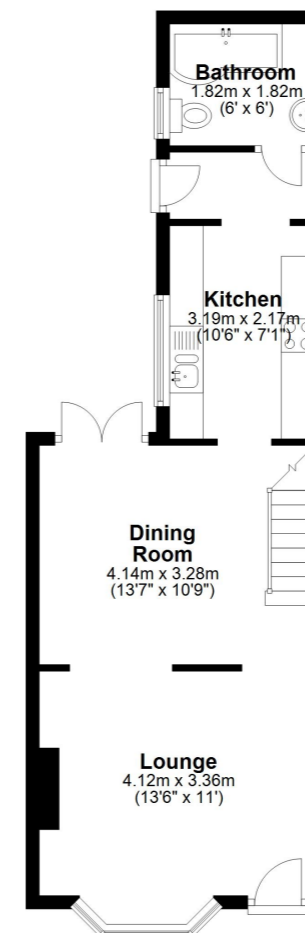
Bedroom

10' 4" x 7' 1" (3.15m x 2.16m) A double bedroom with wood flooring, double glazed window and radiator

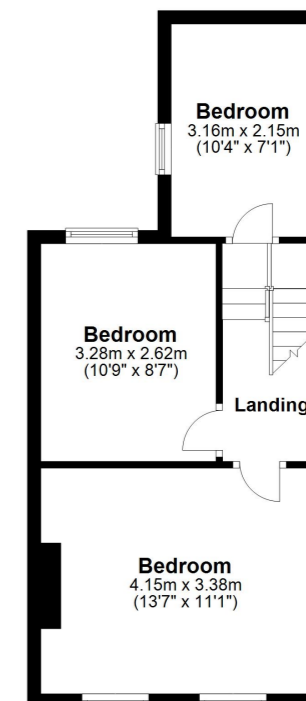
Garden

Rear garden with a fenced boarder patio area and artificial lawn

Ground Floor
Approx. 41.1 sq. metres (442.9 sq. feet)



First Floor
Approx. 35.0 sq. metres (377.1 sq. feet)



Whilst every attempt has been made to ensure the accuracy of the floor plan contained here, measurements of doors, windows, rooms and any other items are approximate and no responsibility is taken for any error, omission or mis-statement. This plan is for illustrative purposes only and should be used as such by any prospective purchaser.
Plan produced using PlanUp.

