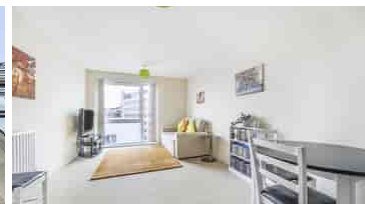


£500,000 Leasehold

Barrington Court, 124 Wilton Road, London SW1V 1AJ



- Ninth Floor
- Very Good Energy Efficiency Rating
- Minutes from Victoria Station
- Shops, Cafes and Restaurants Nearby
- Approx. 525 Sqft Gross Internal Area
- Communal Roof Terrace
- Close to Buckingham Palace and Parliament Square
- St James's Park/Green Park/Hyde Park Within Easy Reach

## GENERAL DESCRIPTION

Barrington Court is a modern building just moments from Victoria Station and only a short walk from Buckingham Palace, Parliament Square and Sloane Square. St James's Park, Green Park and Hyde Park are also within easy reach and there are numerous shops and restaurants nearby. The apartment is on the ninth floor and has a twenty-three-foot, open-plan kitchen/reception room. There is a spacious bedroom with fitted wardrobe, a good-sized bathroom and a large hallway storage/utility cupboard. Well insulated walls, modern double glazing and a communal heating/hot water system make for a very good energy-efficiency rating. Barrington Court has a roof terrace, which is easily accessible from this apartment.

**Tenure:** Leasehold (125 years from 25/03/2009).

**Service Charge:** £388.65 per month (subject to annual review).

**Council Tax:** Band D, Westminster City Council (£1017.18 for 2025-26).

**Please Note:** This property is currently part-owned by A2Dominion Housing Association but is offered as a 100% open-market sale. Upon completion, the full leasehold title would transfer to the buyer.

This property is offered for sale in the condition seen. As a general rule, fitted domestic appliances are included in the sale; non-fitted appliances are not. If you require confirmation, you must request this in writing from Urban Moves. The information in this document supersedes any information given verbally either in person or by telephone.

## DIMENSIONS

### NINTH FLOOR

#### Entrance Hall

#### Reception

23' 0" max. x 10' 2" max. (7.01m x 3.10m)

#### Kitchen

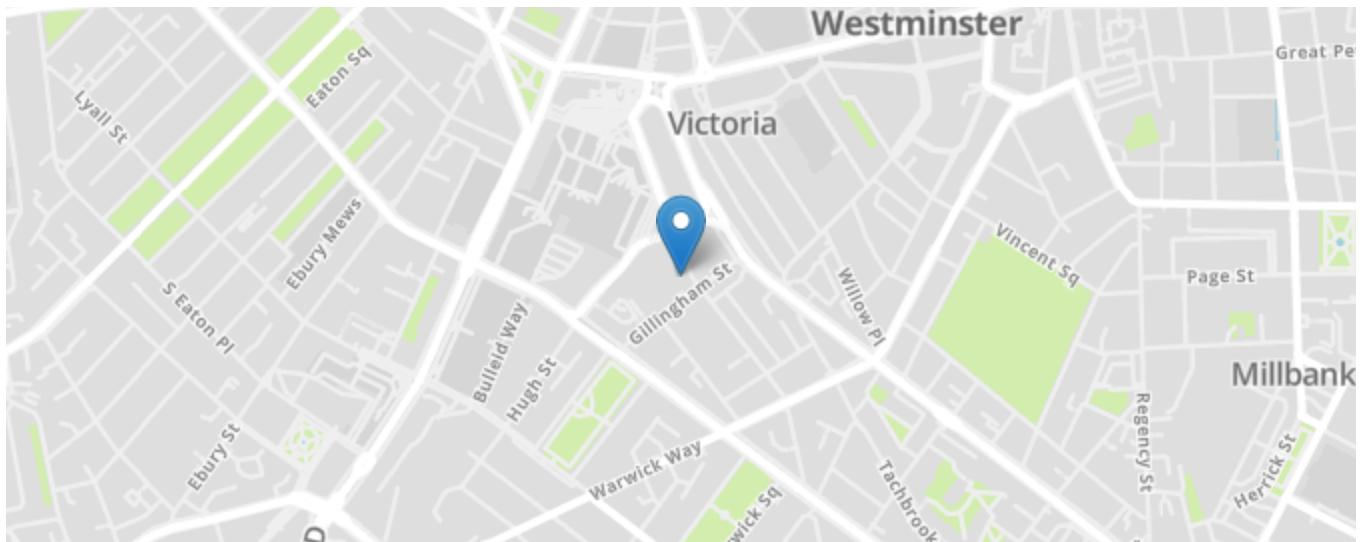
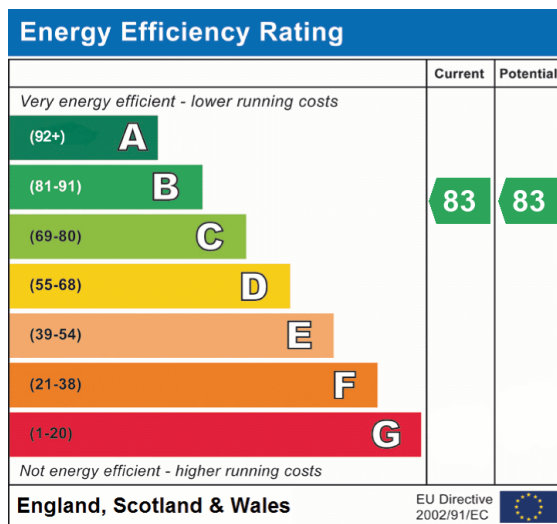
included in reception measurement

#### Bedroom

12' 2" x 12' 0" (3.71m x 3.66m)

#### Bathroom

7' 10" x 5' 9" (2.39m x 1.75m)



All content shown is to be used as a general guideline for the property. None of the contents of this document constitute part of an offer or contract. All measurements, photographs, floor-plans and data provided are only a guideline and should not be relied upon.