



The Grove, Potters Bar, Hertfordshire, EN6 5LJ

£260,000

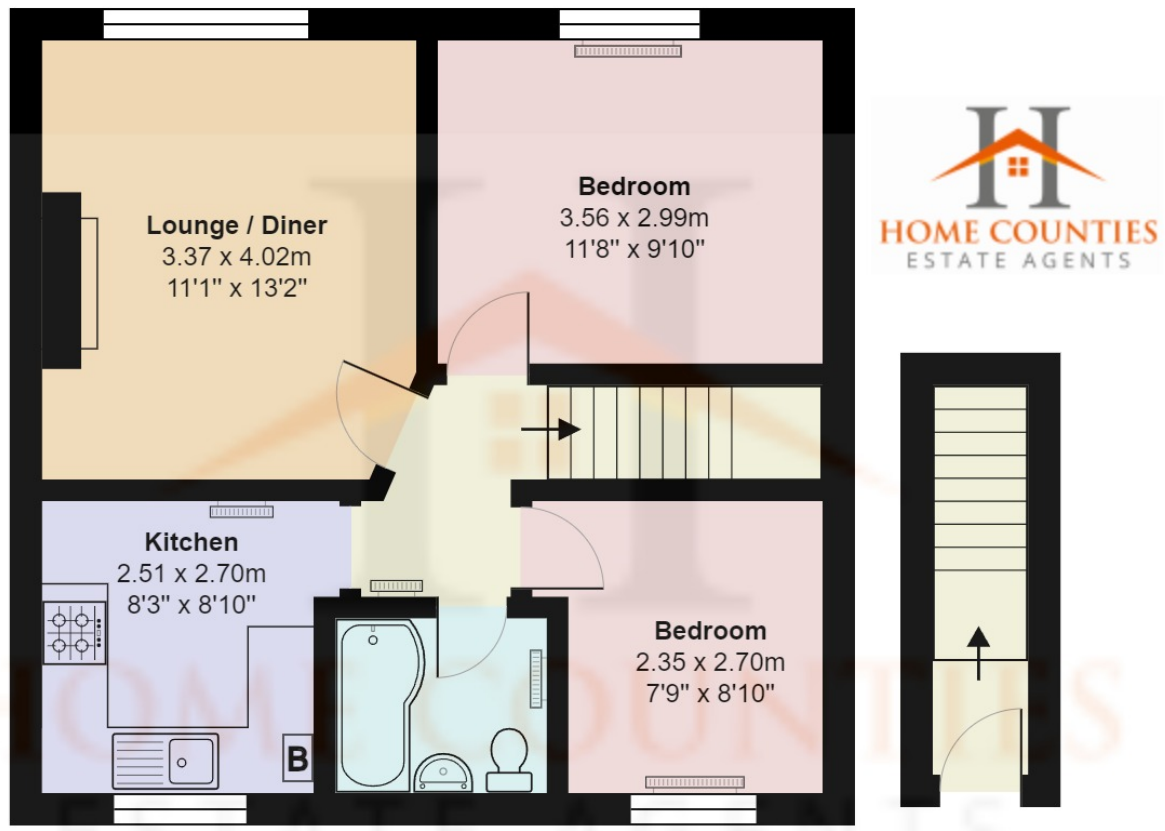
- 78 year lease
- modern kitchen
- chain free
- close to shops and transport
- two bedrooms
- fully tiled bathroom
- walking distance to potters bar high street
- own entrance

The Grove, Potters Bar, Hertfordshire, . EN6 5LJ

£260,000 Leasehold

This delightful two bedroom first floor flat is ideally located just moments from Oakmere Park and Potters Bar High Street. The property benefits from its own entrance, modern kitchen, lounge and two bedrooms and fully tiled bathroom. Other benefits include loft space for storage and is offered chain free.

Lease is 99 years from 25th March 2002 (78 years remaining)



First Floor
Area: 50.3 m² ... 541 ft²

The Grove, Hertfordshire EN6

Total Area: 53.4 m² ... 575 ft²

All measurements are approximate and for display purposes only

