



Day & Co  
ESTATE AGENTS

28 Cavendish Street  
Keighley  
BD21 3RG



27 Stone Grove, Steeton,  
Keighley, West Yorkshire, BD20  
6TQ

£180,000

T: 01535 664609

W: [www.dayandcoestateagents.co.uk](http://www.dayandcoestateagents.co.uk)

E: [keighley@dayandcoestateagents.co.uk](mailto:keighley@dayandcoestateagents.co.uk)

- MID TOWN HOUSE
- GAS CENTRAL HEATING & DOUBLE GLAZING
- UTILITY/STORE ROOM

- THREE BEDROOMS
- FRONT & GARDENS
- EPC RATING D

## SUMMARY

\*\* MID TOWN HOUSE, THREE BEDROOMS, POPULAR VILLAGE OF STEETON, GARDENS, UTILITY/STORE ROOM, GAS CENTRAL HEATING, DOUBLE GLAZING, NO CHAIN, EPC RATING D \*\*

## FULL DESCRIPTION

Situated in the popular district of Steeton is this three bedroom mid town house property offered for sale with no chain. This property is handily placed for access to the primary school and train station and has good-sized front & rear gardens. With gas-fired central heating and UPVC double glazed windows, the accommodation briefly comprises-

Ground Floor - Entrance Hall with understairs cupboard. Living Room with bay window to the front elevation. Dining Room - Open to; Kitchen - With a range of wall and base units with laminate worktop, stainless steel sink unit and tiled splashback. Electric oven, gas hob, plumbing for washing machine. Utility Room/Store - with Base unit with stainless steel sink unit, laminate worktop and plumbing for washing machine.

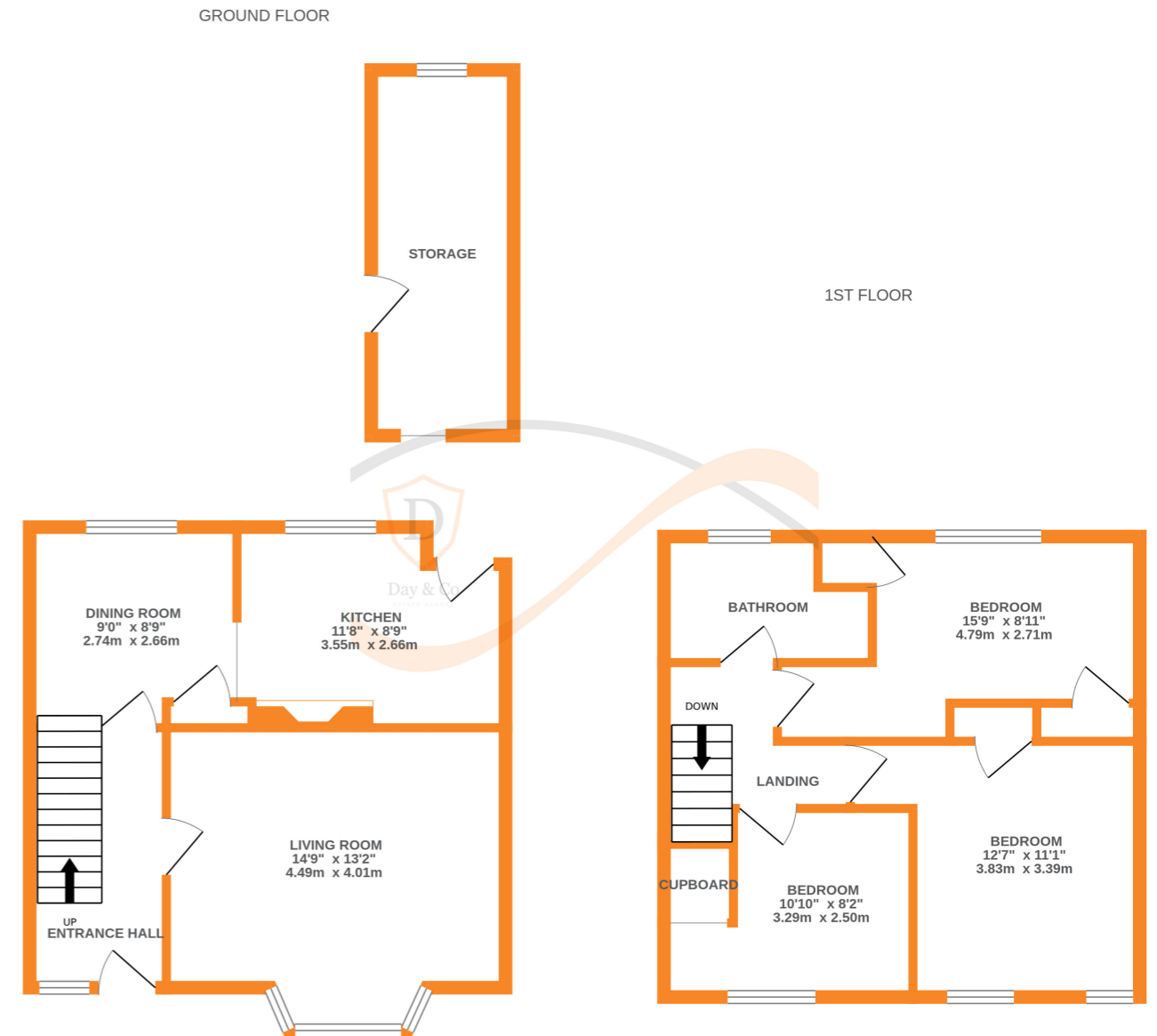
First Floor - Landing - Bedroom One with built-in storage. Bedroom Two with built-in storage. Bedroom Three with built-in store above the bulk head. Bathroom - Three piece suite comprising; low suite wc, hand basin and bath with electric shower over. Heated towel rail

Outside - The front of the property is a lawn with pathway leading to the front door.

To the rear of the property there is a paved seating area and lawn. Long distance views.

EPC Rating D

Any floor plans are for guidance and illustrative purposes only. While we strive for accuracy, we cannot guarantee the precise layout, dimensions, or details shown. Any measurements or boundaries should be verified through the title deeds. We accept no liability for any loss or damage arising from reliance on this information.



Whilst every attempt has been made to ensure the accuracy of the floorplan contained here, measurements of doors, windows, rooms and any other items are approximate and no responsibility is taken for any error, omission or mis-statement. This plan is for illustrative purposes only and should be used as such by any prospective purchaser. The services, systems and appliances shown have not been tested and no guarantee as to their operability or efficiency can be given.  
Made with Metropix ©2025