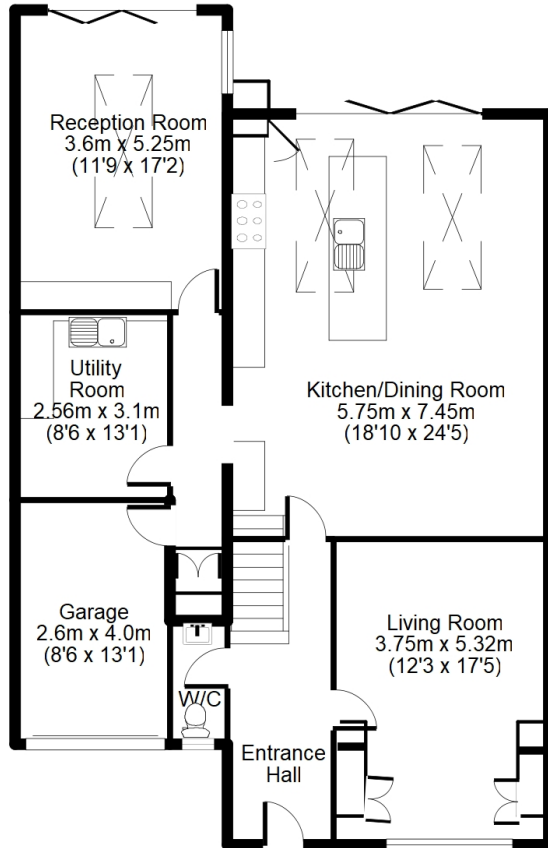


Silver Drive, CAMBERLEY, Surrey GU16 9QN

OFFERS IN EXCESS OF £800,000

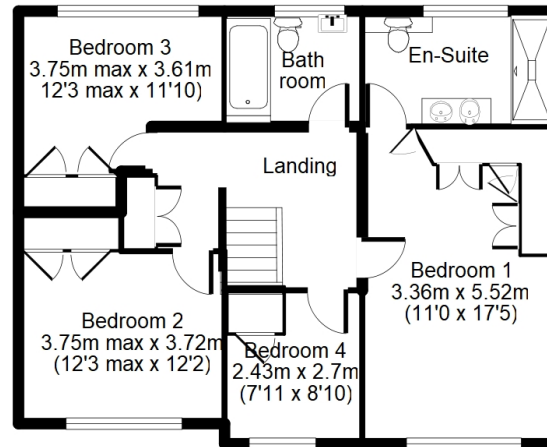
Jigsaw Estates are proud to offer this extended detached home in excellent condition situated on the borders of Camberley and Frimley, within walking distance of Ravenscote and Tomlinscote schools. Accommodation comprises four bedrooms, three of which are doubles and the main bedroom with built in wardrobes and a large, stylish en-suite shower room. There is also an inviting refitted family bathroom. Downstairs you are greeted by the spacious hallway leading to a refitted cloakroom, living room, stunning all-encompassing kitchen/family/dining room with a range of built in appliances, bi-fold doors and electric skylight windows. Leading from this room there is internal access to the garage, refitted and surprisingly large utility room and a separate and generously sized family room with light pouring in from the roof lantern, bi-fold doors and floor to ceiling side aspect window. The garden is quite private and westerly facing with a lovely patio area and large side storage area.





Approx. Total Floor Area:
201 Sq M = 2162 Sq Ft

Floorplan is for illustration purposes only.
All measurements are approximate and should be verified.



- EXTENDED DETACHED HOUSE
- SEPARATE FAMILY ROOM WITH SKY LANTERN & BI-FOLD DOORS
- LARGE UTILITY ROOM & SEPARATE CLOAKROOM
- FOUR BEDROOMS (3 DOUBLES AND A GENEROUS SINGLE BEDROOM)
- SOUGHT AFTER LOCATION WITHIN WALKING DISTANCE OF LOCAL RAVENSCOTE &

- AMAZING ALL ENCOMPASSING KITCHEN/FAMILY/DINING ROOM WITH ELECTRIC SKYLIGHTS AND BI-FOLD DOORS
- SEPARATE LIVING ROOM
- WESTERLY FACING GARDEN WITH LAWN AND PATIO AREAS
- REFITTED BATHROOM & A STUNNING EN-SUITE SHOWER ROOM TO THE MAIN BEDROOM
- DRIVEWAY & GARAGE WITH ELECTRIC ROLLER DOOR

Energy Efficiency Rating

	Current	Potential
Very energy efficient - lower running costs		
(92 to 100) A		
(81 to 91) B		
(69 to 80) C	75	78
(55 to 68) D		
(39 to 54) E		
(21 to 38) F		
(1 to 20) G		
Not energy efficient - higher running costs		
England, Wales & N.Ireland		EU Directive 2002/91/EC

