



## **Flat 12, Garner Court Douglas Road, Stanwell, Staines-upon- Thames, Surrey, TW19 7HB**

SPACIOUS APARTMENT IN SMALL PURPOSE BUILT DEVELOPMENT IDEALLY LOCATED FOR BOTH STAINES & ASHFORD TOWN CENTRES, LOCAL MOTORWAY NETWORKS & HEATHROW AIRPORT. The property benefits from a spacious lounge, modern fitted kitchen, large double bedroom, modern white bathroom suite, parking and a long lease. Viewings Highly Recommended!



## ROOM DESCRIPTIONS

---

### **Communal Entrance**

With security entry door, stairs to second floor.

### **Second Floor**

#### **Entrance Hall**

With hardwood front door, light and power points, night-storage heater, cupboard housing hot water tank. Doors to:

#### **Lounge**

Side aspect UPVC double glazed window, light and power points, TV point, night storage heater.



#### **Kitchen**

Range of modern fitted units at eye and base level, sink drainer unit, built-in oven and hob with extractor over, integrated fridge/freezer, space for washing machine.



### **Bedroom**

Side and rear aspect UPVC double glazed windows, light and power points, electric heater.



### **Bathroom**

Panel enclosed bath, pedestal wash hand basin, low level W.C, partly tiled walls, light and extractor.



### **Outside**

**1 Allocated Parking Bay**

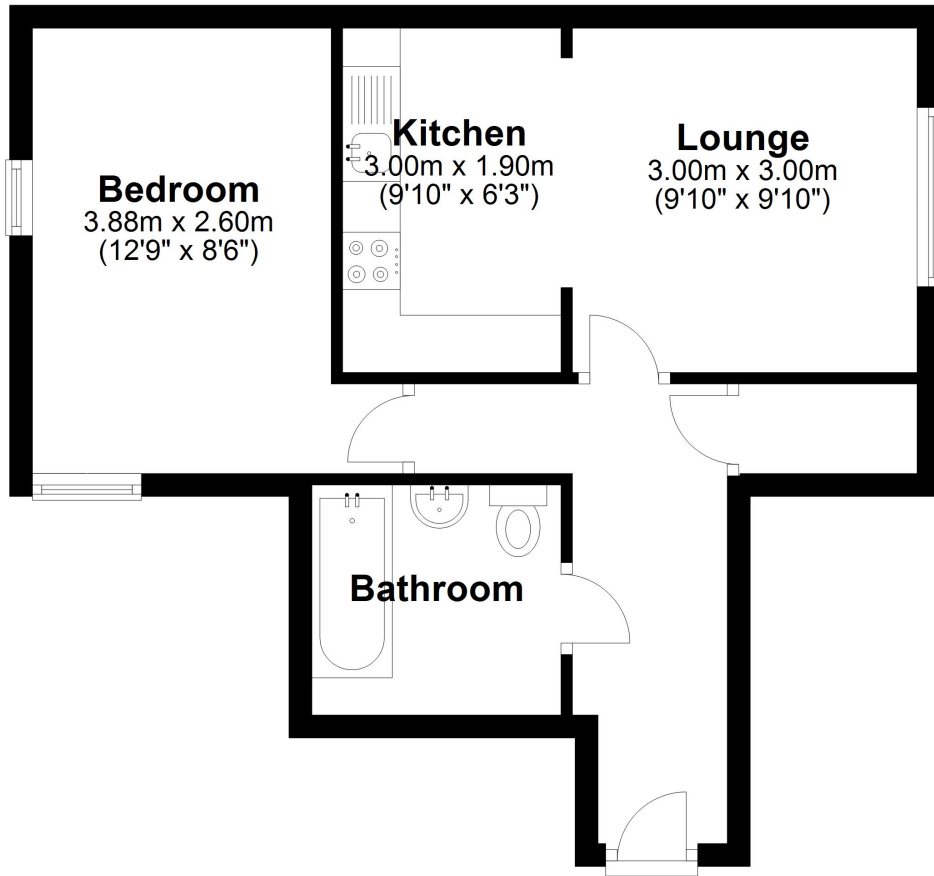


# FLOORPLAN



## Second Floor

Approx. 38.7 sq. metres (417.0 sq. feet)



Total area: approx. 38.7 sq. metres (417.0 sq. feet)