



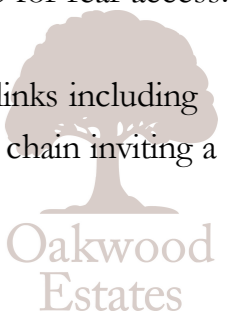
Presenting this spacious four-bedroom terraced property ideal for families or anyone seeking ample living space in a prime location.

The ground floor features a large 17ft living room/diner with spacious open plan kitchen within the extended portion of the house. The modern kitchen offers stylish fitted cupboards, integrated appliances and tiled floor. Additionally, the ground floor features a convenient shower room, adjacent to an 11ft double bedroom, perfect for a guest suite.

Upstairs, the property boasts three generous bedrooms, whilst the main bathroom serves the first floor.



Outside, the driveway offers secure parking for one car at the front, with a brick-built unit suitable for storage. The rear garden is very easily maintained, mostly laid to artificial lawn with gate for rear access.

The property enjoys close proximity to excellent schools, local shops, and transport links including Langley station just 10 minute walk away, and is offered to the market with no onward chain inviting a quick sale.



# Property Information

# Floor Plan

-  FOUR BEDROOM TERRACED HOUSE
-  17FT DINING ROOM
-  CATCHMENT FOR LOCAL GRAMMAR SCHOOLS
-  DRIVEWAY PARKING FOR ONE CAR
-  NO ONWARD CHAIN
-  GROUND FLOOR BEDROOM AND SHOWER ROOM
-  MODERN FINISH AND RECENTLY DECORATED THROUGHOUT
-  KITCHEN EXTENSION WITH STYLISH FITTED KITCHEN
-  10 MINUTE WALK TO LANGLEY STATION

					
x4	x1	x2	x1	Y	N
Bedrooms	Reception Rooms	Bathrooms	Parking Spaces	Garden	Garage



**Quantock Close**  
Approximate Floor Area = 105 Square meters / 1130.22 Square feet

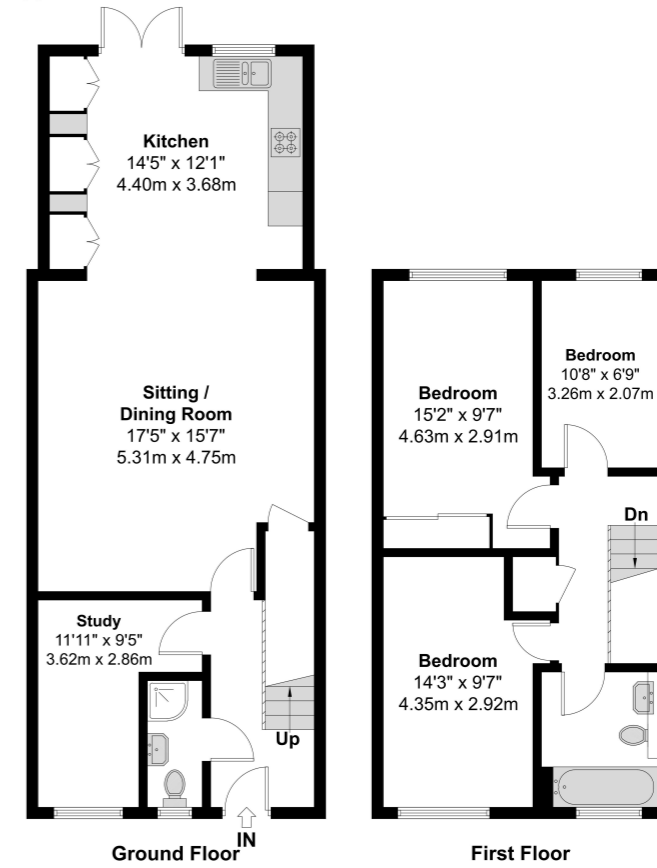


Illustration for identification purposes only, measurements are approximate, not to scale.

Prospective purchasers should be aware that these sales particulars are intended as a general guide only and room sizes should not be relied upon for carpets or furnishing. We have not carried out any form of survey nor have we tested any appliance or services, mechanical or electrical. All maps are supplied by Goview.co.uk from Ordnance Survey mapping. Care has been taken in the preparation of these sales particulars, which are thought to be materially correct, although their accuracy is not guaranteed and they do not form part of any contract.

## Transport Links

NEAREST STATIONS:

- Langley - 0.9 miles
- Datchet - 1.7 miles
- Sunnymeads - 1.8 miles
- Iver - 1.9 miles

## Local School

PRIMARY SCHOOLS:

- Foxborough Primary School  
220 yards
- Holy Family Catholic Primary School  
380 yards
- Marish Primary School  
0.5 miles
- Langley Hall Primary Academy  
0.7 miles
- The Langley Heritage Primary  
0.8 miles

The Langley Academy Primary  
0.8 miles

SECONDARY SCHOOLS:

- Langley Grammar School  
0.5 miles
- The Langley Academy  
0.8 miles
- Langley Hall Arts Academy  
1 mile
- Ditton Park Academy  
1.3 miles
- St Bernard's Catholic Grammar School  
1.5 miles
- Upton Court Grammar School  
1.7 miles
- Council Tax**  
Band C

