



Flat 2 Lunsford Manor Ninfield Road, Bexhill-on-Sea, East Sussex, TN39 5JJ

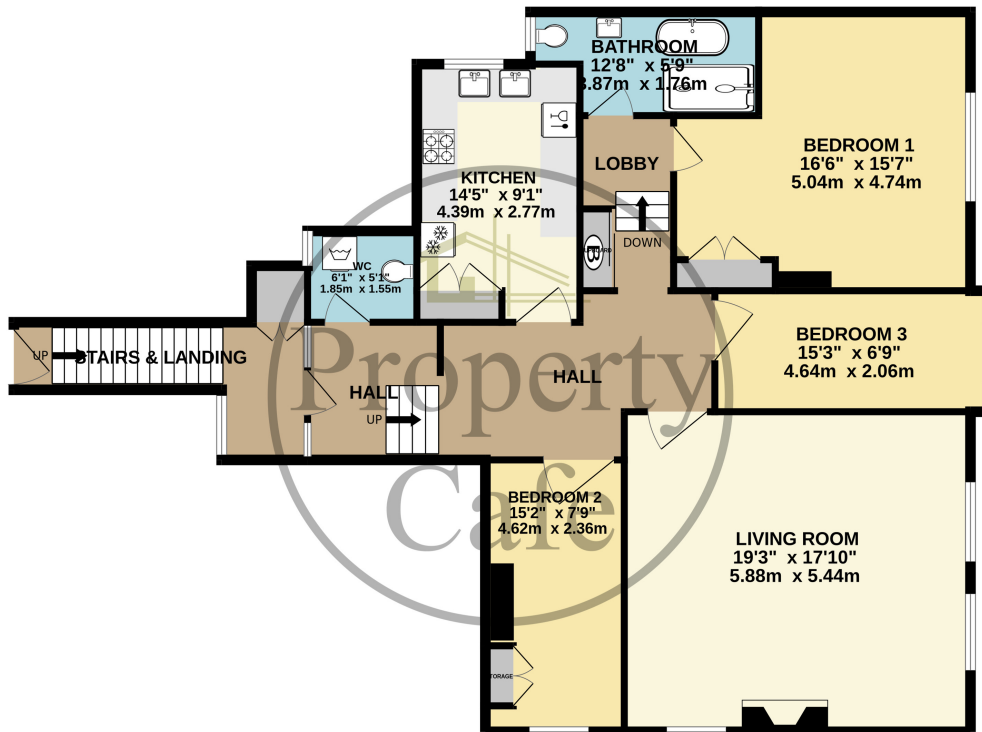
£450,000



- A Spacious Character Apartment
- Completely Refurbished Apartment Throughout
- Elegant Entrance Hall & Landing Areas
- Dual Aspect Lounge-Diner With Stunning Views
- Three Good Size Bedrooms
- Spacious Master Bedroom Suite
- Fully Refurbished Fitted Kitchen
- Fully Refurbished & New Carpets
- Newly Fitted Carpets & Flooring
- Efficient Individually Controlled Electric Heating
- Newly Installed Four Piece Bathroom Suite
- Additional W.C With High Flush Sistrern
- Two Spacious Loft Spaces With Scope
- Own Private Entrance & Lobby Area
- Lovely Mature Communal Grounds
- Substantial Landscaped Gardens & Grounds
- Additional Allocated Private Section Of Grounds
- Ample Off Road Parking & Garage
- Additional Parking Area Planned
- Forming Part A Magnificent Period Manor House
- A Well Run "Residents" Managed Building
- Long Lease & Share Of Freehold
- A Truly Stunning Refurbished Apartment
- Being Offered For Sale With No Chain



**FIRST FLOOR APARTMENT**  
**1321 sq.ft. (122.7 sq.m.) approx.**



TOTAL FLOOR AREA : 1321 sq.ft. (122.7 sq.m.) approx.  
 Whilst every attempt has been made to ensure the accuracy of the floorplan contained here, measurements of doors, windows, rooms and any other items are approximate and no responsibility is taken for any error, omission or mis-statement. This plan is for illustrative purposes only and should be used as such by any prospective purchaser. The services, systems and appliances shown have not been tested and no guarantee as to their operability or efficiency can be given.  
 Made with Metropix ©2024

