



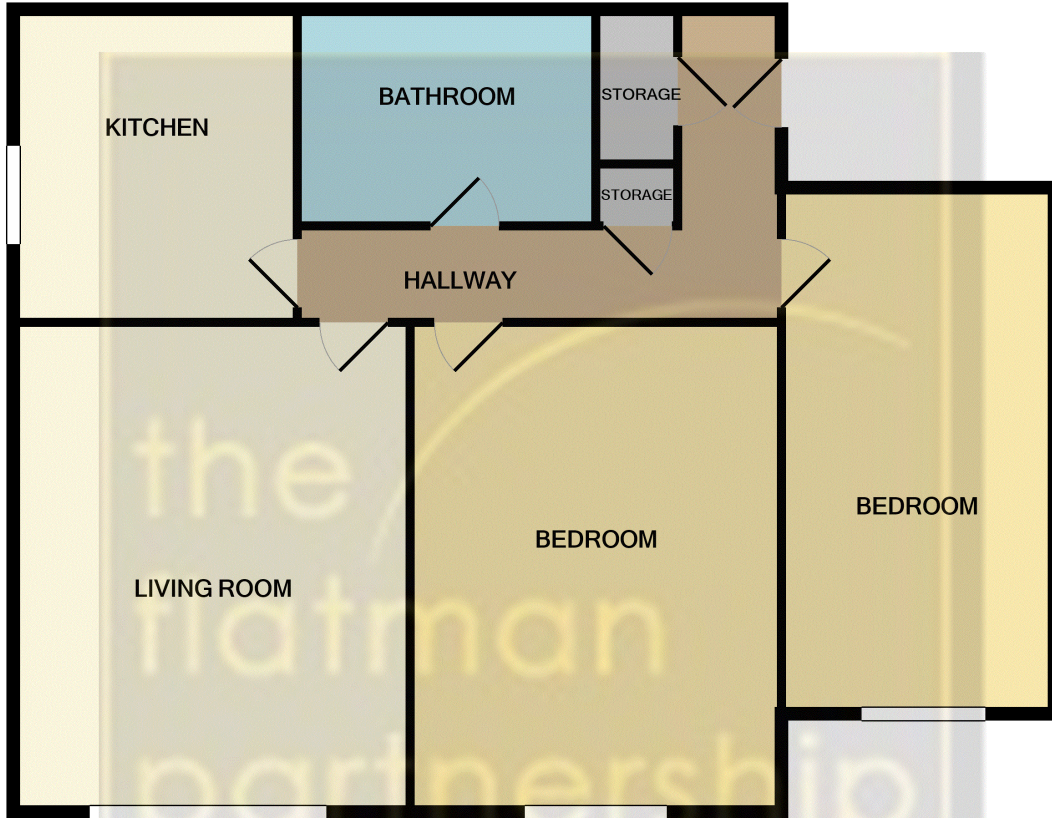
165 Hurworth Avenue, Slough, Berkshire. SL3 7FQ.  
£1,100

- NEW FLOORING THROUGHOUT
- NEWLY RENOVATED FIRST FLOOR APARTMENT
- TWO DOUBLE BEDROOMS
- CLOSE-BY TO SEVERAL GOOD SCHOOLS
- CATCHMENT AREA FOR CASTLEVIEW SCHOOL
- EASY ACCESS TO M4 & M25 MOTORWAY NETWORKS
- OFF-STREET PARKING
- UNFURNISHED
- AVAILABLE FROM THE START OF MAY 2021

# 165 Hurworth Avenue, Slough, Berkshire. SL3 7FQ.

£1,100

NEWLY RENOVATED FIRST FLOOR APARTMENT, with TWO DOUBLE BEDROOMS in highly sought after Hurworth Avenue development and falling within the CASTLEVIEW SCHOOL CATCHMENT AREA. Conveniently located within EASY ACCESS TO SLOUGH TOWN CENTRE, HEATHROW AIRPORT and THE M4 & M25 MOTORWAY NETWORKS. The Property comes UNFURNISHED and is AVAILABLE FROM THE START OF MAY 2021.



TOTAL APPROX. FLOOR AREA 988 SQ.FT. (91.8 SQ.M.)

Whilst every attempt has been made to ensure the accuracy of the floor plan contained here, measurements of doors, windows, rooms and any other items are approximate and no responsibility is taken for any error, omission, or mis-statement. This plan is for illustrative purposes only and should be used as such by any prospective purchaser. The services, systems and appliances shown have not been tested and no guarantee as to their operability or efficiency can be given  
Made with Metropix ©2021

