



Whitechapel High Street, London, E1 7AQ

Cow & Co
LONDON

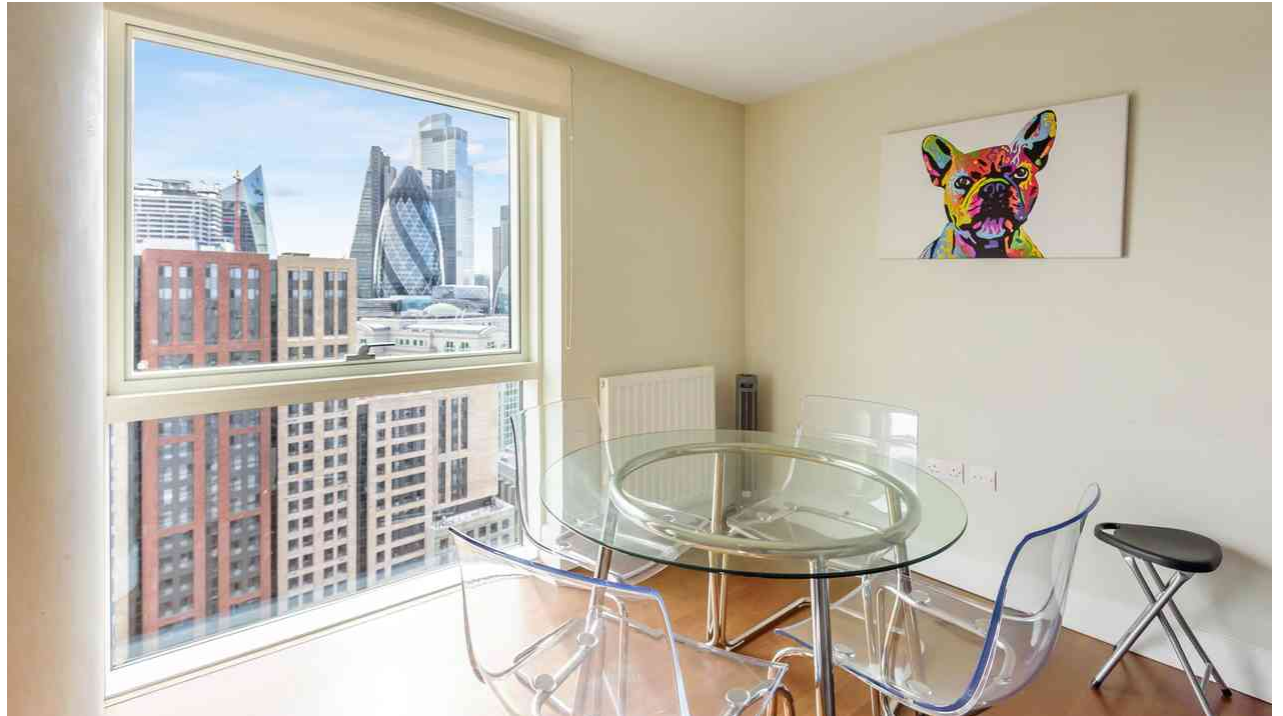


Guide price of £3250-£3750 pcm. An opulent lateral apartment set on the 20th floor of the exclusive Crawford Building.

Ideally located moments from Aldgate East station, this stunning two bedroom flat boasts spectacular views from a bright open-plan reception room, two bathrooms and two double bedrooms.

Additional features include; 24-hour concierge service and video entry system. Offered to market chain free and sold with vacant possession this unit should not be missed.

Whitechapel High Street offers fantastic transport links as well as a wealth of amenities from nearby Brick Lane and Spitalfields Market.

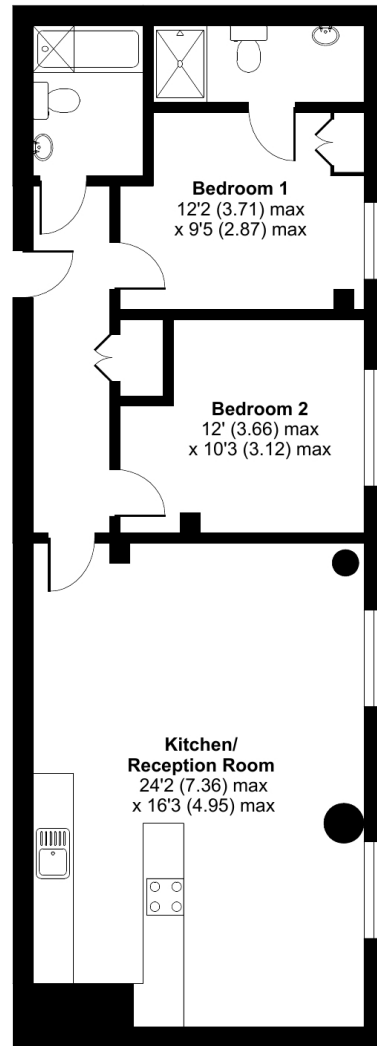


- Stunning two bedroom, twentieth floor flat
- Bright open-plan reception room
- Panoramic city views
- Master bedroom with en suite
- Within contemporary development with concierge
- Moments from Aldgate East station and Brick Lane
- Modern and well equipped kitchen

Whitechapel High Street, London, E1

Approximate Area = 825 sq ft / 76.6 sq m

For identification only - Not to scale



TWENTIETH FLOOR



Floor plan produced in accordance with RICS Property Measurement Standards incorporating International Property Measurement Standards (IPMS2 Residential). © nchecon 2021. Produced for Cow & Co Properties Ltd. REF: 875014

Tel: 0208 065 0010
Email: thehub@cowandco-london.com
Web: cowandco-london.com

Agents note: All measurements are approximate and whilst every attempt has been made to ensure accuracy they are for general guidance only and must not be relied on. The fixture and fittings referred to have not been tested and therefore no guarantee can be given that they are in working order. Internal photographs are reproduced for general information and it must not be inferred that any item shown is included with the property.

Cow & Co
LONDON