



GB



Flat 59 Vermillion Court, Elvedon Road, Feltham, Greater London TW13 4SQ
£249,950 - Leasehold



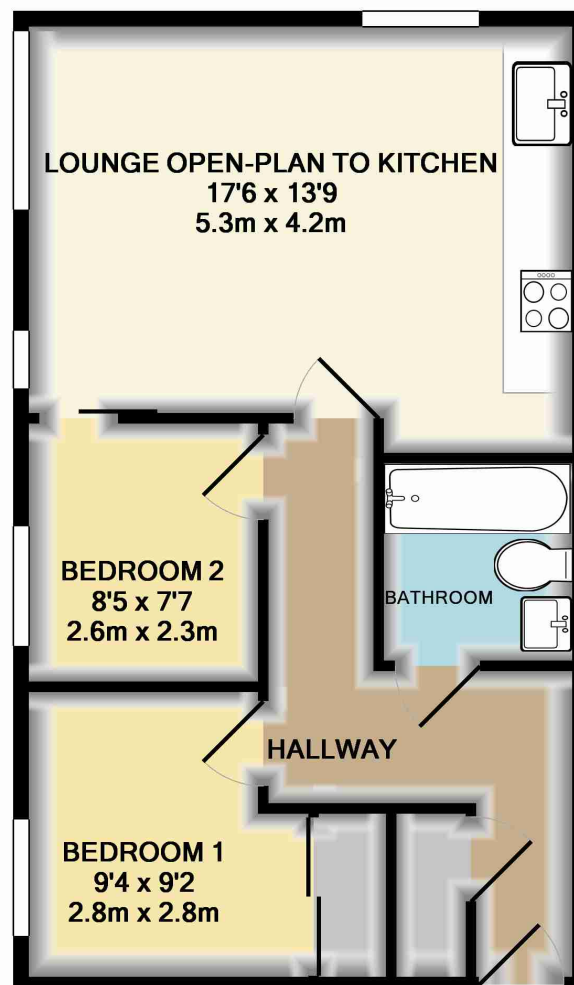
PROPERTY DESCRIPTION

This modern and spacious first-floor apartment is offered to the market with no onward chain and is situated in a popular and well-regarded location. Well presented throughout, the accommodation comprises a generously sized lounge open-plan to a modern fitted kitchen with integrated appliances, two bedrooms, and a contemporary bathroom. Further benefits include gas central heating, double glazing, a video entry-phone system, and allocated off-street parking.

POINTS OF INTEREST

- Modern first-floor apartment
- Open-plan lounge/kitchen with appliances
- Gas central heating & double glazing
- Video entry-phone system
- Allocated off-street parking
- Popular residential location
- No onward chain





TOTAL APPROX. FLOOR AREA 528 SQ.FT. (49.1 SQ.M.)

Whilst every attempt has been made to ensure the accuracy of the floor plan contained here, measurements of doors, windows, rooms and any other items are approximate and no responsibility is taken for any error, omission, or mis-statement. This plan is for illustrative purposes only and should be used as such by any prospective purchaser. The services, systems and appliances shown have not been tested and no guarantee as to their operability or efficiency can be given

Made with Metropix ©2013

Energy Efficiency Rating			
	Current	Potential	
Very energy efficient - lower running costs			
(92+)	A		
(81-91)	B	81	81
(69-80)	C		
(55-68)	D		
(39-54)	E		
(21-38)	F		
(1-20)	G		
Not energy efficient - higher running costs			
England, Scotland & Wales			
EU Directive 2002/91/EC			