

## 122 Dover Road

Folkestone  
CT20 1NN

**£400,000 FREEHOLD**

FOR SALE WITH BURNAP + ABEL... Welcome to this stunning 4 bed terraced house in the seaside town of Folkestone. This period style home boasts three reception rooms, providing ample space for entertaining or relaxing with loved ones. The property is in excellent decorative order, ready for you to move in and make it your own. One of the standout features of this property is the potential to create off-road parking to the rear, adding convenience and value to your home. Located close to the harbour, you'll be able to enjoy the popular Harbour Arm and take leisurely strolls along the waterfront. With its perfect blend of historic charm and modern amenities, this house truly offers the best of both worlds. Schedule a viewing with sole agent Burnap + Abel today and start envisioning your life in this enchanting property.



**Lounge**

14' 10" x 10' 9" (4.52m x 3.28m)

**Reception Two**

12' 0" x 11' 10" (3.66m x 3.61m)

**Entrance Hall**

**Dining Room**

12' 3" x 12' 0" (3.73m x 3.66m)

**Kitchen**

11' 9" x 9' 10" (3.58m x 3.00m)

**Utility Room**

9' 1" x 6' 7" (2.77m x 2.01m)

**W.C**

**First Floor Landing**

**Bedroom One**

16' 2" x 12' 3" (4.93m x 3.73m)

**Bedroom Two**

12' 1" x 10' 0" (3.68m x 3.05m)

**Second Floor Landing**

**Family Bathroom**

12' 1" x 9' 11" (3.68m x 3.02m)

**Bedroom Three**

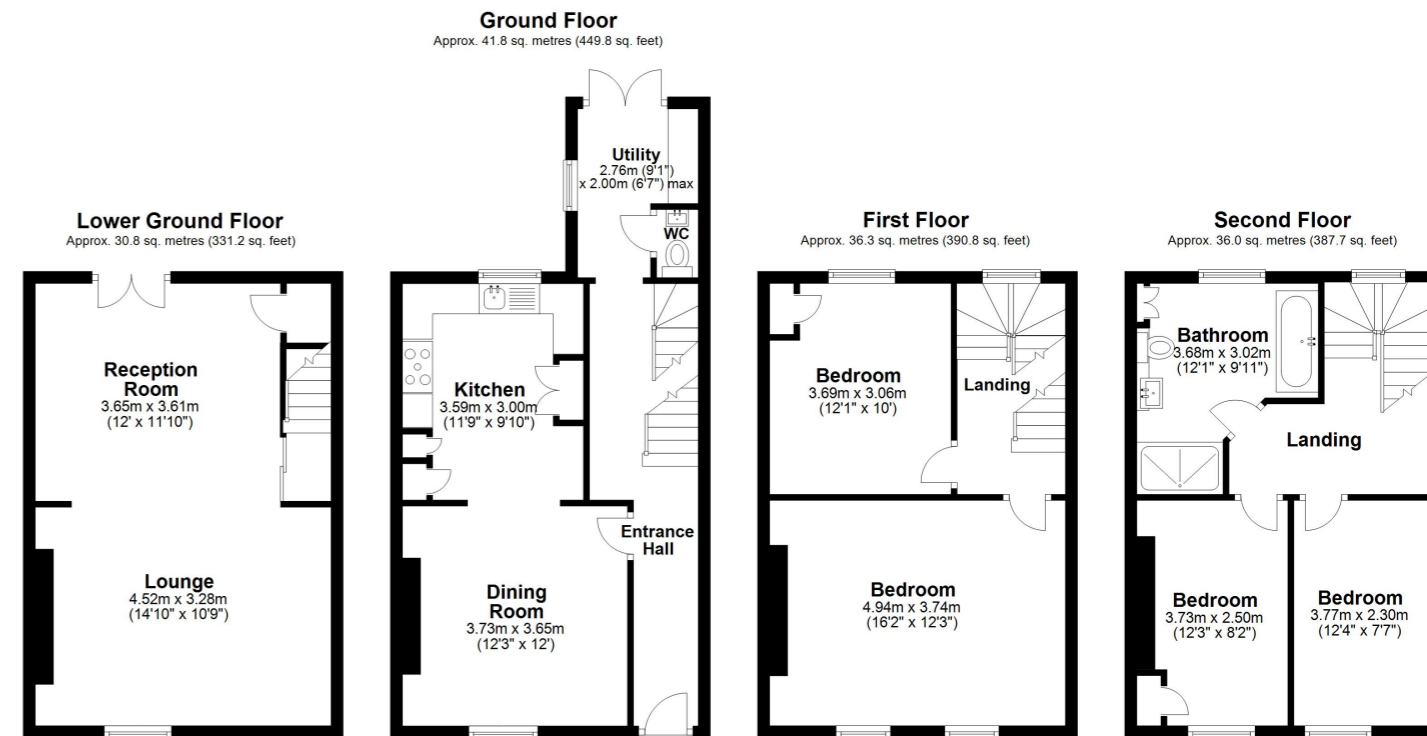
12' 3" x 8' 2" (3.73m x 2.49m)

**Bedroom Four**

12' 4" x 7' 7" (3.76m x 2.31m)

**Rear Garden**

We understand the property previously had off road parking to the rear. The garden has been extended into that space. But the garden can be made shorter to create off road parking again.



Whilst every attempt has been made to ensure the accuracy of the floor plan contained here, measurements of doors, windows, rooms and any other items are approximate and no responsibility is taken for any error, omission or mis-statement. This plan is for illustrative purposes only and should be used as such by any prospective purchaser. Plan produced using PlanUp.

