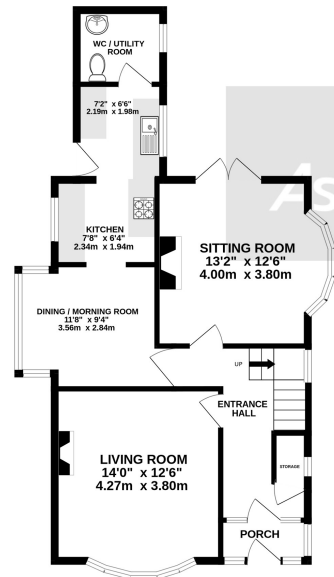
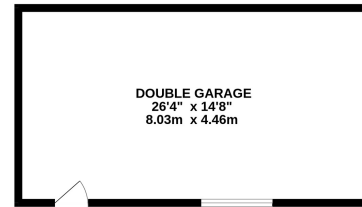
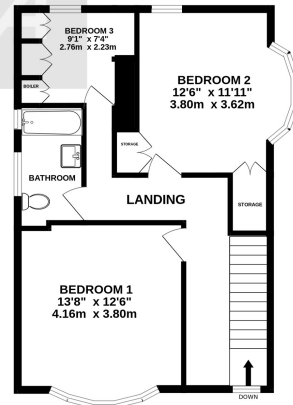


GROUND FLOOR
1040 sq.ft. (96.6 sq.m.) approx.



1ST FLOOR
550 sq.ft. (51.1 sq.m.) approx.



Ashtons

TOTAL FLOOR AREA : 1590 sq.ft. (147.7 sq.m.) approx.

Whilst every attempt has been made to ensure the accuracy of the floorplan contained here, measurements of doors, windows, rooms and any other items are approximate and no responsibility is taken for any error, omission or mis-statement. This plan is for illustrative purposes only and should be used as such by any prospective purchaser. The services, systems and appliances shown have not been tested and no guarantee as to their operability or efficiency can be given. Made with Metropix ©2023



Highfield Road, Widnes. WA8. Offers Over £385,000

Corner Plot | Double garage | Catchment area's of Wade Deacon | Period property original features |



Contact your local office
to arrange a viewing:

Padgate: 01925 479334
Great Sankey: 01925 454300
Winwick: 01925 232146
Stockton Heath: 01925 453400
St.Helens: 01744 754120
Wigan: 01942 498862
Culcheth: 01925 764744
Ashton-In-Makerfield: 01942 364446
Newton-Le-Willows: 01925 907770
Commercial Office: 01925 907709
Lettings Head Office: 01925 873533
Financial Services: 01925 221234

Viewing Arrangements

Viewing is strictly by appointment only through
Ashtons Estate Agency.

Disclaimer Property Details

These particulars, whilst being believed to be accurate are set out as a general outline only for guidance and do not constitute any part of an offer or contract. Intending purchasers should not rely on them as statements of representation of fact, but must satisfy themselves by inspection or otherwise as to their accuracy. We have not carried out a detailed survey nor tested the services, appliances and specific furnishings. The measurements given are approximate. No person in this firm's employment has the authority to make or give any representation or warranty in respect of the property.

All details, photographs and floorplans are the copyright of Ashtons Estate Agency.



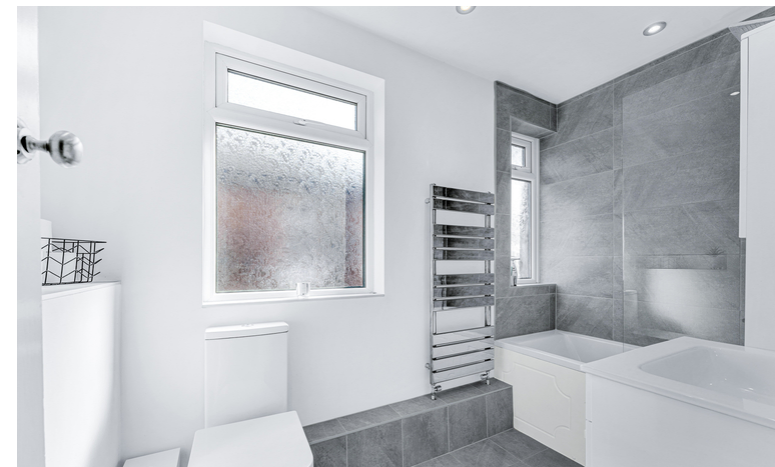
How much you can borrow?
Speak to a mortgage expert in your local office.

Ashtons Financial Services

Ashtons

Ashtons.net rightmove

PrimeLocation.com Zoopla.co.uk



Welcome to this exquisite period detached family home that seamlessly blends character with modern comfort. Situated on a charming corner plot, this property is a true treasure with its landscaped gardens and captivating features.

As you step into the lounge, you'll be immediately struck by the elegance and warmth that fills the room. The sweeping bay windows flood the space with natural light, creating a serene ambience that perfectly complements the timeless period features.

The graceful dining room offers a comfortable setting for hosting dinner parties or intimate family gatherings and in the morning Room you'll discover a peaceful morning room that provides a blissful and quaint room serviced by a modern fitted kitchen with integrated appliances and sleep counter tops.

The first floor period features continue to charm with the spacious and elegant bedrooms. Each room has its own unique character, making it a joy to retire to at the end of



Did you know?

Ashtons Estate Agency now have a network of Independent, whole of Market Mortgage Advisors working in our offices. Speak to an expert today, contact your local office.

